

Sensor Setting

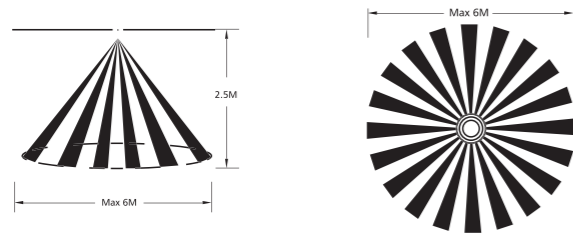
Hold Time		
1	2	
-	-	5S
ON	-	1min
-	ON	3min
ON	ON	5min

Notice 1:
The hold time can be selected by the slide switch.
The hold time counting should be started after the sensor is powered on and initialized.

Daylight Sensor	
3	
-	30Lux
ON	Disable

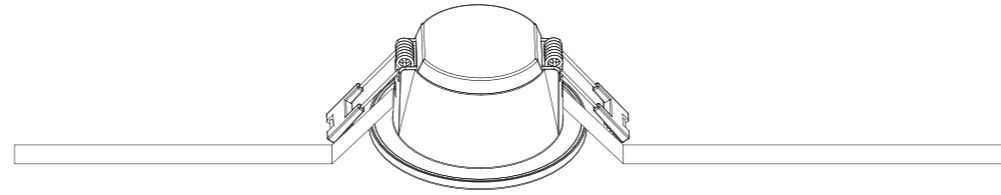
Notice 1:
The light threshold can be selected through the slide switch, it may cause a large deviation in different lamps.

Induction Range

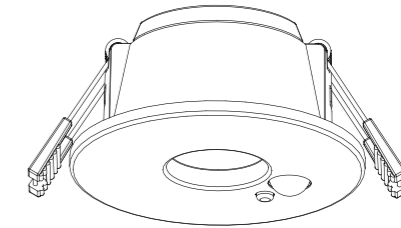


Notice 1: The distance test is carried out under Ta25°C, 2.5 meters surface installation height. The test result is based on the movement along the tangential direction of the sensor, and the detect distance can be adjusted by the dial switch.

Notice 2: Infrared sensor will be affected by temperature. Too high or too low temperature may affect the detect distance or even cause failure to sensor.



LED DOWNLIGHT USER GUIDE



LED DOWNLIGHT

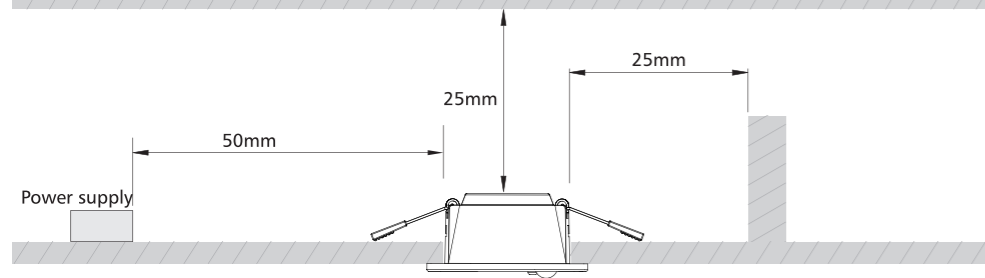
Safety Instructions

To ensure correct function and safety, please read and follow all instructions carefully before using the product:

1. Turn off power supply before installation or before doing any maintenance work.
2. Do not install any luminaire near the heat source.
3. Do not exceed the nominal supply voltage or amperage ratings.
4. All wiring and installation of the light fitting must adhere to local and national wiring rules.
5. Take care not to pull any electrical wires during unpacking as this may damage the connection.
6. Lay out all the components on a smooth surface and make sure there are no components missing before assembling.
7. To avoid injury or damage to the fitting, please ensure that power leads and screws are secure before connecting the power.
8. Please keep instructions for future reference.
9. Please refer to IP(Ingress Protection) rating of this luminaire when deciding the location of installation.

Installation Instruction

Fig 1: Installation Spacing



Ceiling cutout table

Downlight Dia (inch)	2.5
Ceiling Cutout (mm)	68-75

IP rating table: Before installation, please check the IP label on the luminaire to choose the right place to install.

IP20/IP40	Indoor use only, do not use in wet or damp place.
IP44/IP54	Suitable for indoor areas including bathrooms and covered/sheltered areas such as porches.
IP65	Suitable for outdoor areas, not suitable for water immersion.

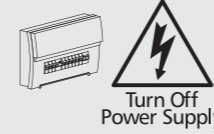
Dimmer selection table: Before installation, please check the information of driver as below.

Non-dim	Can not be used with any dimmer.
Triac dim	Compliable with recommended TRIAC dimmers, dimming range 8-100%.
0/1-10V	Only work with 0/1-10V dimming system, dimming range 8-100%.
DALI	Only work with DALI dimming system, dimming range 8-100%.

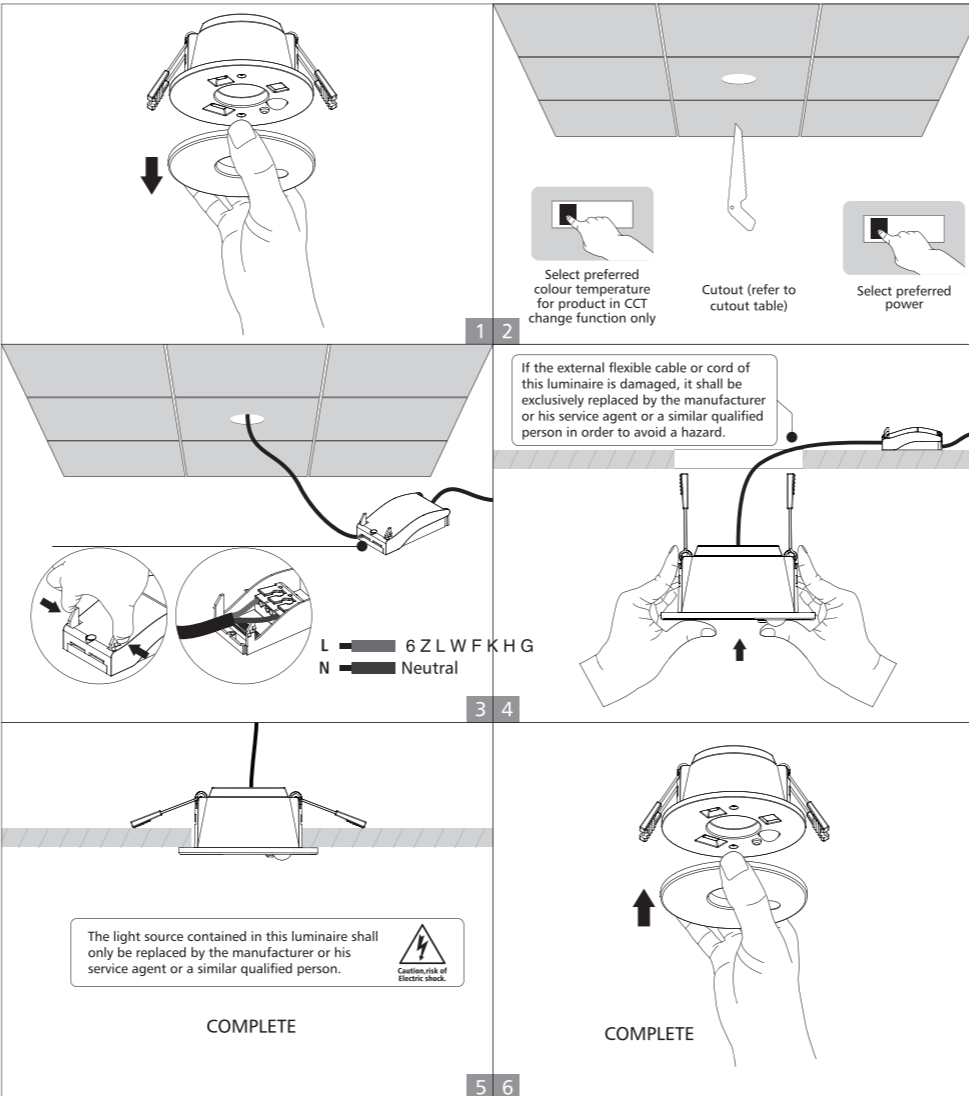
Installation Procedure

WARNING

1. Switch off before installation.
2. Switch on only after complete installation and examination of the circuit.
3. Professional electrician for installation and maintenance only.



Downlight with internal driver



Functions Instruction (For specific function, please refer to actual model)

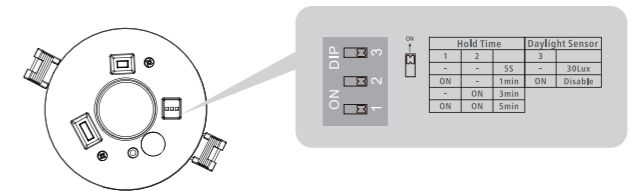


Sensor

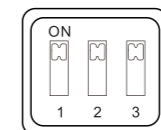
Detection area: 90 degree wide detective beam angle with 2-3 meters distance

PIR Sensor datasheet	
Operating Voltage	20-40V DC
Power consumption	0.2W Max
Microwave frequency	-
Transmission power	□
Detection angle	90°
Detection Area	2-3M
Hold time	5s/1 min/3min/5min are adjustable by DIP switch
Daylight sensor	30Lux/Disable are adjustable by DIP switch
Stand-by DIM Level	-
Stand-by Period	-
Dimming Range	-
Microw ave ON/OFF function	-
Installation Height	Recommended Installation Height: Ceiling mounted height 2.5m.
Operating temperature(°C)	0□ ~ □□□

Sensor Setting



Factory setting



)DFWRU\□VHWLQ.	
Detection Area	Daylight sensor
100%	Disable