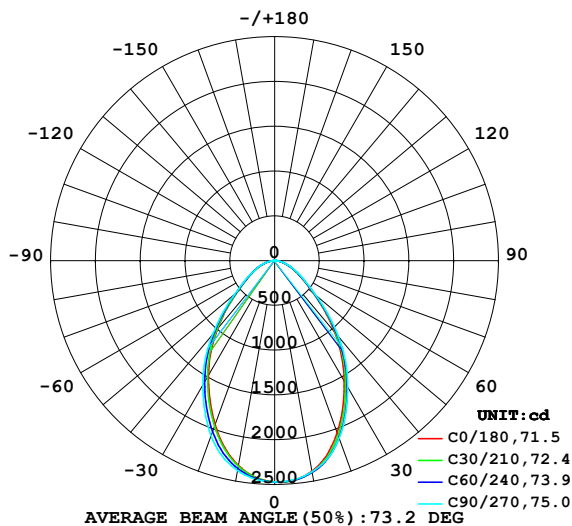


LUMINAIRE PHOTOMETRIC TEST REPORT

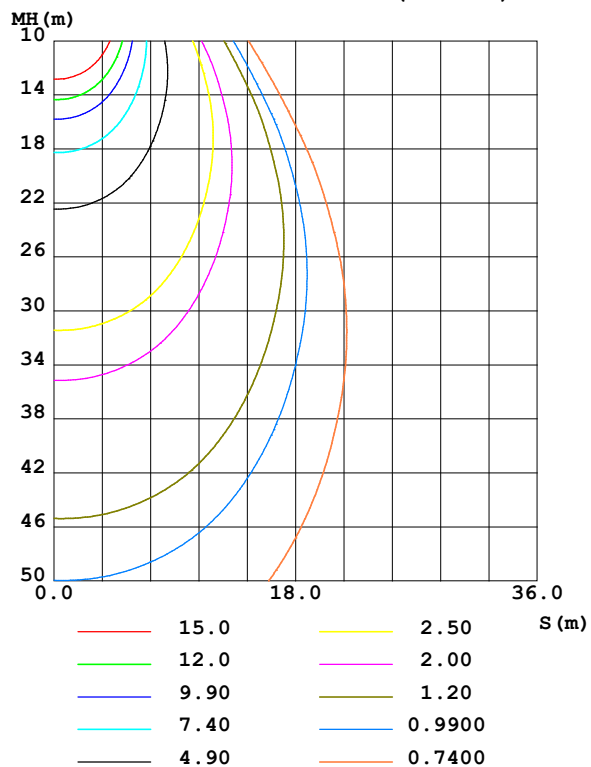
Test:U:231.10V I:0.1384A P:31.300W PF:0.9786 Freq:50.00Hz UTHDi:0.00% ITHDi:0.00% KDisp:0 Lamp Flux:3899.94x1 lm		
NAME: 62001000701.30W.4K	TYPE: 62001000701.30W.4K	WEIGHT:
SPEC.: 62001000701.30W.4K	DIM.: 1175*65*42mm	SERIAL No.:
MFR.:	SUR.: 1169*57mm	Shielding Angle:

DATA OF LAMP		PHOTOMETRIC DATA Eff: 124.60 lm/W			
MODEL	62001000701.30W.4K	Imax (cd)	2473	S/MH(C0/180)	0.96
NOMINAL POWER(W)		LOR(%)	100.0	S/MH(C90/270)	1.02
RATED VOLTAGE(V)	230	TOTAL FLUX(lm)	3899.9	η UP,DN(C0-180)	0.3,50.2
NOMINAL FLUX(lm)	3899.94	CIE CLASS	DIRECT	η UP,DN(C180-360)	0.3,49.2
LAMPS INSIDE	1	η up (%)	0.6	CIBSE SHR NOM	1.00
TEST VOLTAGE(V)	230	η down (%)	99.4	CIBSE SHR MAX	1.10

LUMINOUS INTENSITY DISTRIBUTION DIAGRAM



C0 PLANE ISOLUX DIAGRAM (UNIT:lx)



C Range: 0 - 360DEG
C Interval: 30.0DEG
Test Speed: HIGH
Temperature:25.3°C
Operators:
Test Date:2026-04-21

γ Range: 0 - 180DEG
 γ Interval: 1.0DEG
Test System:EVERFINE GO-3000H_V1 SYSTEM V2.00.471
Humidity:65.0%
Test Distance:12.177m [K=1.0000]
Remarks:

ZONAL FLUX DIAGRAM

ZONAL FLUX DIAGRAM:

γ	C0	C45	C90	C135	C180	C225	C270	C315	γ	Φ zone	Φ total	%lum, lamp
10	2388	2401	2395	2353	2325	2345	2381	2387	0- 10	231.3	231.3	5.93,5.93
20	2043	2088	2109	2021	1948	1999	2078	2066	10- 20	626.5	857.8	22,22
30	1556	1603	1632	1545	1480	1533	1606	1577	20- 30	830.1	1688	43.3,43.3
40	1043	1078	1110	1045	992.2	1028	1078	1054	30- 40	820.3	2508	64.3,64.3
50	564.7	580.3	601.1	572.3	545.9	558.4	582.3	569.0	40- 50	614.3	3122	80.1,80.1
60	309.2	314.2	326.5	315.8	306.5	311.5	320.3	310.4	50- 60	380.4	3503	89.8,89.8
70	164.7	167.2	175.1	170.1	165.8	169.0	172.8	165.1	60- 70	233.5	3736	95.8,95.8
80	54.42	56.73	59.63	58.39	55.60	57.08	57.42	54.37	70- 80	116.2	3852	98.8,98.8
90	0.7592	1.663	2.266	1.615	0.9338	1.790	1.379	1.754	80- 90	24.37	3877	99.4,99.4
100	0.8197	0.9925	1.024	1.030	1.264	1.218	1.103	1.127	90-100	1.169	3878	99.4,99.4
110	1.354	1.519	1.741	1.679	1.913	1.957	1.921	1.770	100-110	1.445	3879	99.5,99.5
120	2.266	2.486	2.811	2.668	2.960	3.077	3.116	2.868	110-120	2.201	3882	99.5,99.5
130	3.563	3.806	4.153	3.990	4.349	4.501	4.549	4.256	120-130	3.079	3885	99.6,99.6
140	5.065	5.308	5.688	5.526	5.978	6.099	6.106	5.832	130-140	3.785	3889	99.7,99.7
150	6.693	6.918	7.214	7.148	7.607	7.681	7.642	7.437	140-150	4.059	3893	99.8,99.8
160	8.357	8.472	8.681	8.660	9.165	9.137	9.066	8.961	150-160	3.709	3896	99.9,99.9
170	9.847	9.820	9.921	9.942	10.43	10.20	10.10	10.12	160-170	2.665	3899	100,100
180	10.47	10.36	10.31	10.33	10.60	10.40	10.35	10.37	170-180	0.9774	3900	100,100
DEG	LUMINOUS INTENSITY:cd									UNIT:lm		

Conical surface Flux(90deg): 2848.7 lm

%lum = 73.0%

%lamp = 73.0%

Conical surface Flux(130deg): 3634.9 lm

%lum = 93.2%

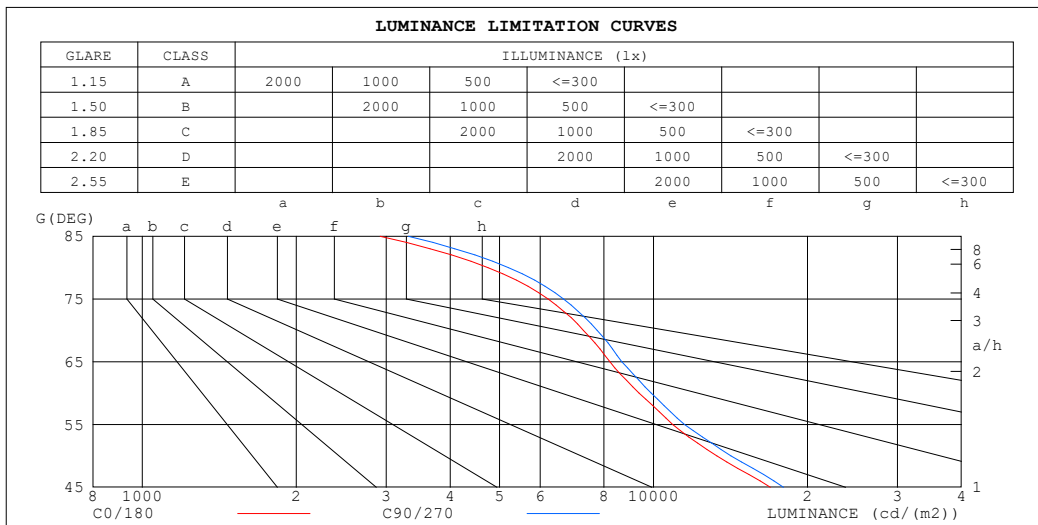
%lamp = 93.2%

C Range: 0 - 360DEG
 C Interval: 30.0DEG
 Test Speed: HIGH
 Temperature:25.3°C
 Operators:
 Test Date:2026-04-21

γ Range: 0 - 180DEG
 γ Interval: 1.0DEG
 Test System:EVERFINE GO-3000H_V1 SYSTEM V2.00.471
 Humidity:65.0%
 Test Distance:12.177m [K=1.0000]
 Remarks:

LUMINANCE LIMITATION CURVES

Test:U:231.10V I:0.1384A P:31.300W PF:0.9786 Freq:50.00Hz UTHDi:0.00% ITHDi:0.00% KDisp:0 Lamp Flux:3899.94x1 lm		
NAME: 62001000701.30W.4K	TYPE: 62001000701.30W.4K	WEIGHT:
SPEC.: 62001000701.30W.4K	DIM.: 1175*65*42mm	SERIAL No.:
MFR.:	SUR.: 1169*57mm	Shielding Angle:



LUMINANCE cd/(m2)		
G (DEG)	C0/180	C90/270
85	2918	3314
80	4746	5205
75	6218	6663
70	7294	7758
65	8218	8674
60	9365	9899
55	10909	11507
50	13304	14175
45	16927	17948

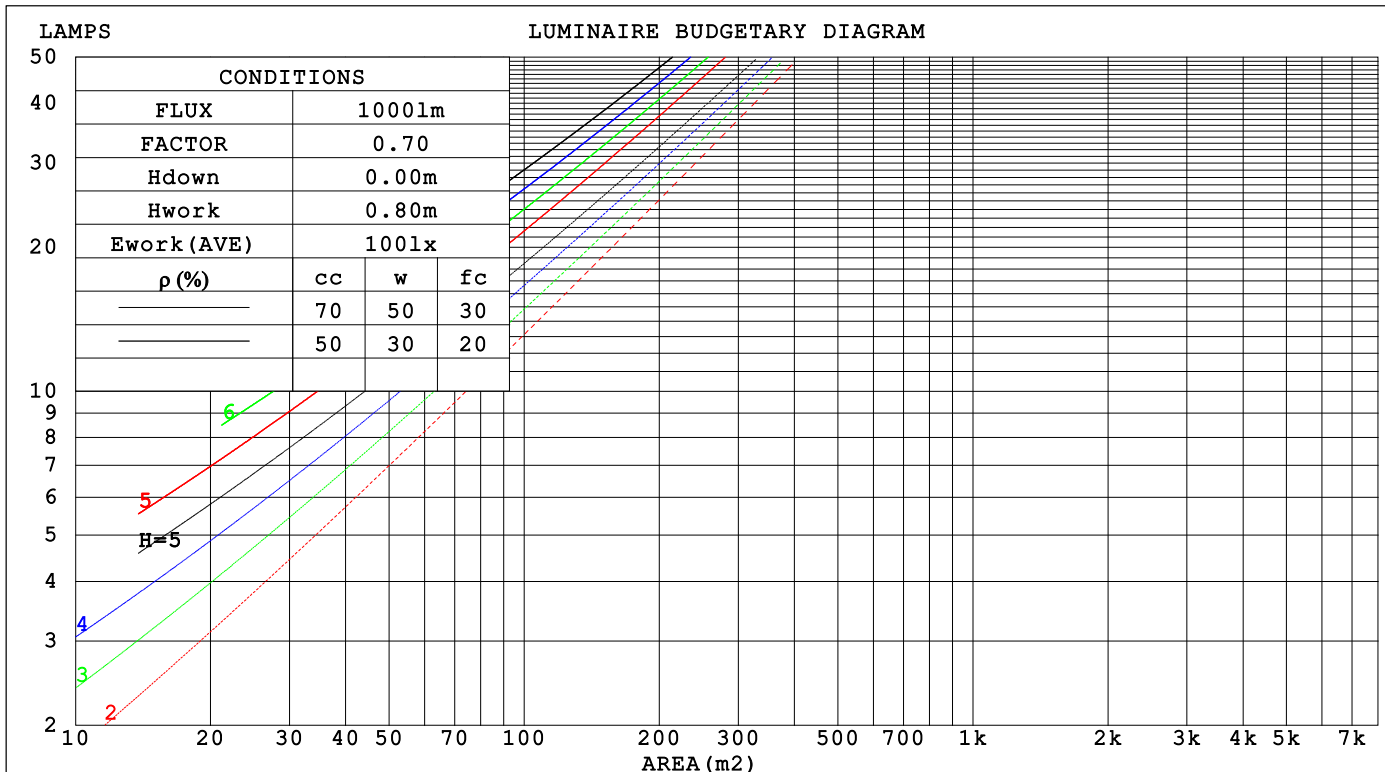
C Range: 0 - 360DEG
C Interval: 30.0DEG
Test Speed: HIGH
Temperature:25.3°C
Operators:
Test Date:2026-04-21

γ Range: 0 - 180DEG
γ Interval: 1.0DEG
Test System:EVERFINE GO-3000H_V1 SYSTEM V2.00.471
Humidity:65.0%
Test Distance:12.177m [K=1.0000]
Remarks:

CU AND LUMINAIRE BUDGETARY ESTIMATE DIAGRAM

Test:U:231.10V I:0.1384A P:31.300W PF:0.9786 Freq:50.00Hz		
UTHDi:0.00% ITHDi:0.00% KDisp:0 Lamp Flux:3899.94x1 lm		
NAME: 62001000701.30W.4K	TYPE: 62001000701.30W.4K	WEIGHT:
SPEC.: 62001000701.30W.4K	DIM.: 1175*65*42mm	SERIAL No.:
MFR.:	SUR.: 1169*57mm	Shielding Angle:

pcc	80%			70%			50%			30%			10%			0
pw	50%	30%	10%	50%	30%	10%	50%	30%	10%	50%	30%	10%	50%	30%	10%	0
pfc	20%			20%			20%			20%			20%			0
RCR	RCR:Room Cavity Ratio															



C Range: 0 - 360DEG
C Interval: 30.0DEG
Test Speed: HIGH
Temperature:25.3℃
Operators:
Test Date:2026-04-21

γ Range: 0 - 180DEG
γ Interval: 1.0DEG
Test System:EVERFINE GO-3000H_V1 SYSTEM V2.00.471
Humidity:65.0%
Test Distance:12.177m [K=1.0000]
Remarks:

WEC AND CCEC

Test:U:231.10V I:0.1384A P:31.300W PF:0.9786 Freq:50.00Hz		
UTHDi:0.00% ITHDi:0.00% KDisp:0 Lamp Flux:3899.94x1 lm		
NAME: 62001000701.30W.4K	TYPE: 62001000701.30W.4K	WEIGHT:
SPEC.: 62001000701.30W.4K	DIM.: 1175*65*42mm	SERIAL No.:
MFR.:	SUR.: 1169*57mm	Shielding Angle:

pcc	80%			70%			50%			30%			10%			0	
pw	50%	30%	10%	50%	30%	10%	50%	30%	10%	50%	30%	10%	50%	30%	10%	0	
pfc	20%			20%			20%			20%			20%			0	
RCR	RCR:Room Cavity Ratio						Wall Exitance Coefficients(WEC)										
0.0																	
1.0	.244	.139	.044	.237	.135	.043	.223	.128	.041	.211	.122	.039	.200	.116	.037		
2.0	.234	.128	.039	.228	.125	.039	.216	.120	.037	.206	.115	.036	.196	.111	.035		
3.0	.220	.117	.035	.215	.115	.035	.205	.111	.034	.196	.107	.033	.187	.104	.032		
4.0	.207	.108	.032	.202	.106	.031	.193	.103	.031	.185	.099	.030	.178	.097	.029		
5.0	.194	.099	.029	.190	.098	.028	.182	.095	.028	.175	.092	.027	.168	.090	.027		
6.0	.183	.092	.026	.179	.090	.026	.172	.088	.026	.166	.086	.025	.159	.084	.025		
7.0	.172	.085	.024	.169	.084	.024	.163	.082	.024	.157	.080	.023	.151	.079	.023		
8.0	.162	.079	.022	.160	.079	.022	.154	.077	.022	.149	.075	.022	.144	.074	.021		
9.0	.154	.074	.021	.151	.074	.021	.146	.072	.020	.141	.071	.020	.137	.069	.020		
10.0	.146	.070	.019	.143	.069	.019	.139	.068	.019	.135	.067	.019	.130	.066	.019		

pcc	80%			70%			50%			30%			10%			0	
pw	50%	30%	10%	50%	30%	10%	50%	30%	10%	50%	30%	10%	50%	30%	10%	0	
pfc	20%			20%			20%			20%			20%			0	
RCR	RCR:Room Cavity Ratio						Ceiling Cavity Exitance Coefficients (CCEC)										
0.0	.195	.195	.195	.167	.167	.167	.114	.114	.114	.065	.065	.065	.021	.021	.021		
1.0	.180	.161	.144	.154	.138	.124	.106	.095	.086	.061	.055	.050	.019	.018	.016		
2.0	.169	.137	.110	.145	.118	.095	.099	.081	.066	.057	.047	.039	.018	.015	.013		
3.0	.160	.119	.086	.137	.102	.074	.094	.071	.052	.054	.041	.031	.017	.013	.010		
4.0	.151	.105	.069	.130	.090	.060	.089	.063	.042	.052	.037	.025	.017	.012	.008		
5.0	.143	.094	.057	.123	.081	.050	.085	.057	.035	.049	.033	.021	.016	.011	.007		
6.0	.136	.085	.048	.117	.074	.042	.081	.052	.030	.047	.030	.018	.015	.010	.006		
7.0	.130	.078	.042	.112	.068	.036	.077	.047	.026	.045	.028	.015	.015	.009	.005		
8.0	.124	.072	.036	.107	.062	.032	.074	.044	.022	.043	.026	.013	.014	.008	.004		
9.0	.119	.067	.032	.102	.058	.028	.071	.041	.020	.041	.024	.012	.013	.008	.004		
10.0	.113	.063	.029	.098	.055	.025	.068	.038	.018	.040	.023	.011	.013	.007	.004		

C Range: 0 - 360DEG
C Interval: 30.0DEG
Test Speed: HIGH
Temperature:25.3℃
Operators:
Test Date:2026-04-21

γ Range: 0 - 180DEG
γ Interval: 1.0DEG
Test System:EVERFINE GO-3000H_V1 SYSTEM V2.00.471
Humidity:65.0%
Test Distance:12.177m [K=1.0000]
Remarks:

UGR(Unified Glare Rating) Table

Test:U:231.10V I:0.1384A P:31.300W PF:0.9786 Freq:50.00Hz UTHDi:0.00% ITHDi:0.00% KDisp:0 Lamp Flux:3899.94x1 lm										
NAME: 62001000701.30W.4K					TYPE: 62001000701.30W.4K			WEIGHT:		
SPEC.: 62001000701.30W.4K					DIM.: 1175*65*42mm			SERIAL No.:		
MFR.:					SUR.: 1169*57mm			Shielding Angle:		
ceiling/cavity	0.7	0.7	0.5	0.5	0.3	0.7	0.7	0.5	0.5	0.3
walls	0.5	0.3	0.5	0.3	0.3	0.5	0.3	0.5	0.3	0.3
working plane	0.2	0.2	0.2	0.2	0.2	0.2	0.2	0.2	0.2	0.2
Room dimensions	Viewed crosswise					Viewed endwise				
x = 2H y = 2H	20.2	21.5	20.5	21.7	21.9	20.4	21.7	20.7	21.9	22.1
3H	20.9	22.1	21.2	22.3	22.6	21.2	22.3	21.5	22.6	22.8
4H	21.2	22.3	21.5	22.6	22.8	21.5	22.6	21.8	22.8	23.1
6H	21.4	22.4	21.7	22.7	22.9	21.6	22.7	22.0	22.9	23.2
8H	21.4	22.4	21.7	22.7	22.9	21.7	22.7	22.0	22.9	23.2
12H	21.4	22.3	21.7	22.6	22.9	21.6	22.6	22.0	22.9	23.2
4H 2H	20.5	21.6	20.8	21.8	22.1	20.7	21.8	21.0	22.0	22.3
3H	21.4	22.4	21.7	22.7	23.0	21.6	22.6	22.0	22.9	23.2
4H	21.8	22.6	22.2	23.0	23.3	22.0	22.9	22.4	23.2	23.5
6H	22.0	22.8	22.4	23.1	23.5	22.2	23.0	22.6	23.4	23.7
8H	22.1	22.8	22.5	23.1	23.5	22.3	23.0	22.7	23.4	23.8
12H	22.1	22.7	22.5	23.1	23.5	22.3	23.0	22.7	23.4	23.8
8H 4H	21.9	22.6	22.3	23.0	23.4	22.1	22.8	22.5	23.2	23.6
6H	22.2	22.8	22.7	23.2	23.6	22.4	23.0	22.9	23.4	23.9
8H	22.3	22.8	22.8	23.2	23.7	22.5	23.0	23.0	23.5	23.9
12H	22.3	22.8	22.8	23.2	23.7	22.6	23.0	23.0	23.5	23.9
12H 4H	21.9	22.5	22.3	22.9	23.3	22.1	22.7	22.5	23.1	23.5
6H	22.2	22.7	22.7	23.2	23.6	22.4	22.9	22.9	23.4	23.8
8H	22.3	22.8	22.8	23.2	23.7	22.5	23.0	23.0	23.4	23.9
Variations with the observer position at spacings(CIE Pub.117):										
S = 1.0H	+ 0.6 / - 0.7					+ 0.6 / - 0.7				
1.5H	+ 0.5 / - 0.5					+ 0.5 / - 0.4				
2.0H	+ 1.2 / - 0.8					+ 1.3 / - 0.8				

CIE Pub.117, 3900 lm Total Lamp Luminous Flux Corrected ($8\log(F/F_0) = 4.7$)
Area: 0.066 m²

C Range: 0 - 360DEG
C Interval: 30.0DEG
Test Speed: HIGH
Temperature:25.3℃
Operators:
Test Date:2026-04-21

γ Range: 0 - 180DEG
 γ Interval: 1.0DEG
Test System:EVERFINE GO-3000H_V1 SYSTEM V2.00.471
Humidity:65.0%
Test Distance:12.177m [K=1.0000]
Remarks:

UTILIZATION FACTORS TABLE

Test:U:231.10V I:0.1384A P:31.300W PF:0.9786 Freq:50.00Hz UTHDi:0.00% ITHDi:0.00% KDisp:0 Lamp Flux:3899.94x1 lm		
NAME: 62001000701.30W.4K	TYPE: 62001000701.30W.4K	WEIGHT:
SPEC.: 62001000701.30W.4K	DIM.: 1175*65*42mm	SERIAL No.:
MFR.:	SUR.: 1169*57mm	Shielding Angle:

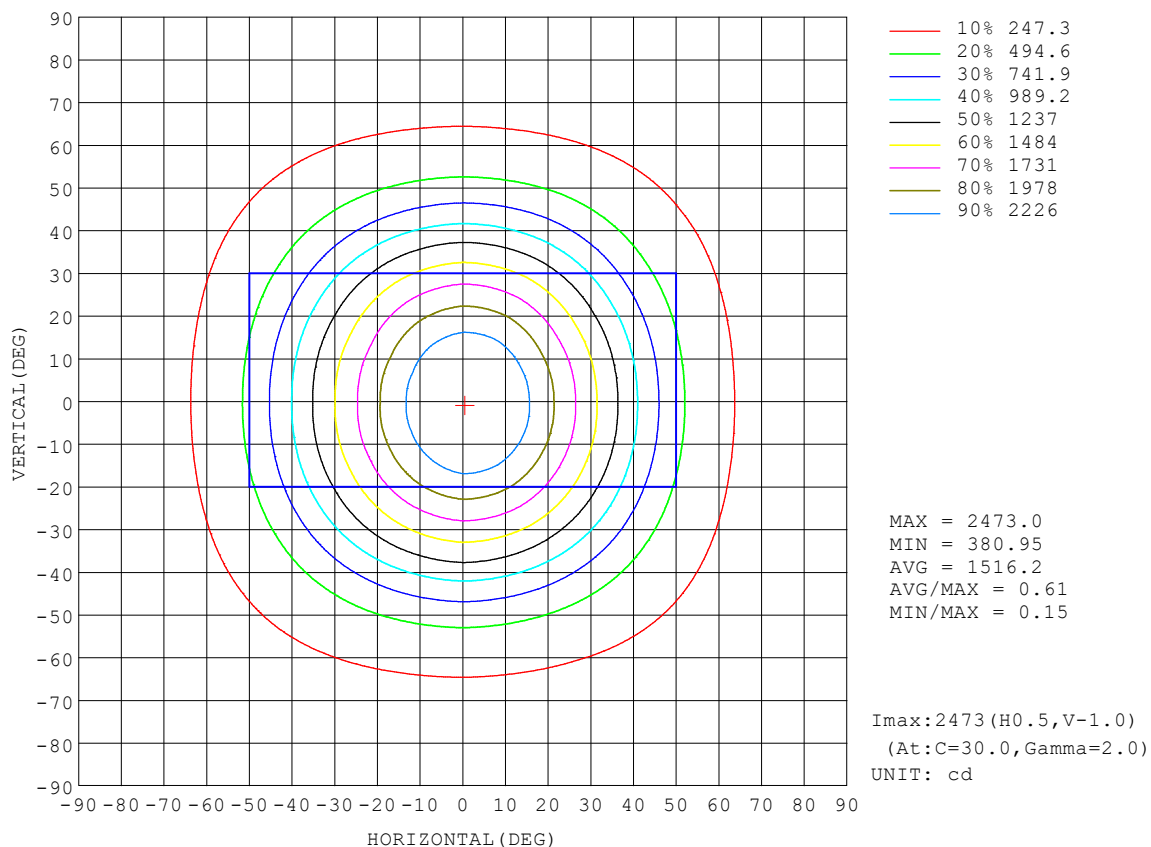
REFLECTANCE										
Ceiling	0.8	0.8	0.8	0.7	0.7	0.7	0.5	0.5	0.5	0
Walls	0.7	0.5	0.3	0.7	0.5	0.3	0.7	0.5	0.3	0
Working plane	0.2	0.2	0.2	0.2	0.2	0.2	0.2	0.2	0.2	0
ROOM INDEX	UTILIZATION FACTORS (PERCENT) $k(RI) \times RCR = 5$									
$k = 0.60$	69	60	54	69	60	54	68	59	54	48
0.80	79	69	64	78	69	63	76	68	63	57
1.00	86	77	71	85	77	71	83	77	71	65
1.25	92	84	78	91	83	78	88	82	77	71
1.50	96	88	83	95	88	83	92	86	81	75
2.00	101	95	90	99	94	89	96	91	87	81
2.50	104	98	94	102	97	93	99	94	91	83
3.00	107	101	97	105	100	96	101	97	94	86
4.00	110	105	102	107	104	100	103	100	98	89
5.00	111	108	105	109	106	103	105	102	100	91
ROOM INDEX	UF (total)									Direct
According to DIN EN 13032-2 2004			Suspended					SHRNOM = 1.25		

C Range: 0 - 360DEG
C Interval: 30.0DEG
Test Speed: HIGH
Temperature: 25.3°C
Operators:
Test Date: 2026-04-21

γ Range: 0 - 180DEG
 γ Interval: 1.0DEG
Test System: EVERFINE GO-3000H_V1 SYSTEM V2.00.471
Humidity: 65.0%
Test Distance: 12.177m [K=1.0000]
Remarks:

ISOCANDELA DIAGRAM

Test:U:231.10V I:0.1384A P:31.300W PF:0.9786 Freq:50.00Hz UTHDi:0.00% ITHDi:0.00% KDisp:0 Lamp Flux:3899.94x1 lm		
NAME: 62001000701.30W.4K	TYPE: 62001000701.30W.4K	WEIGHT:
SPEC.: 62001000701.30W.4K	DIM.: 1175*65*42mm	SERIAL No.:
MFR.:	SUR.: 1169*57mm	Shielding Angle:

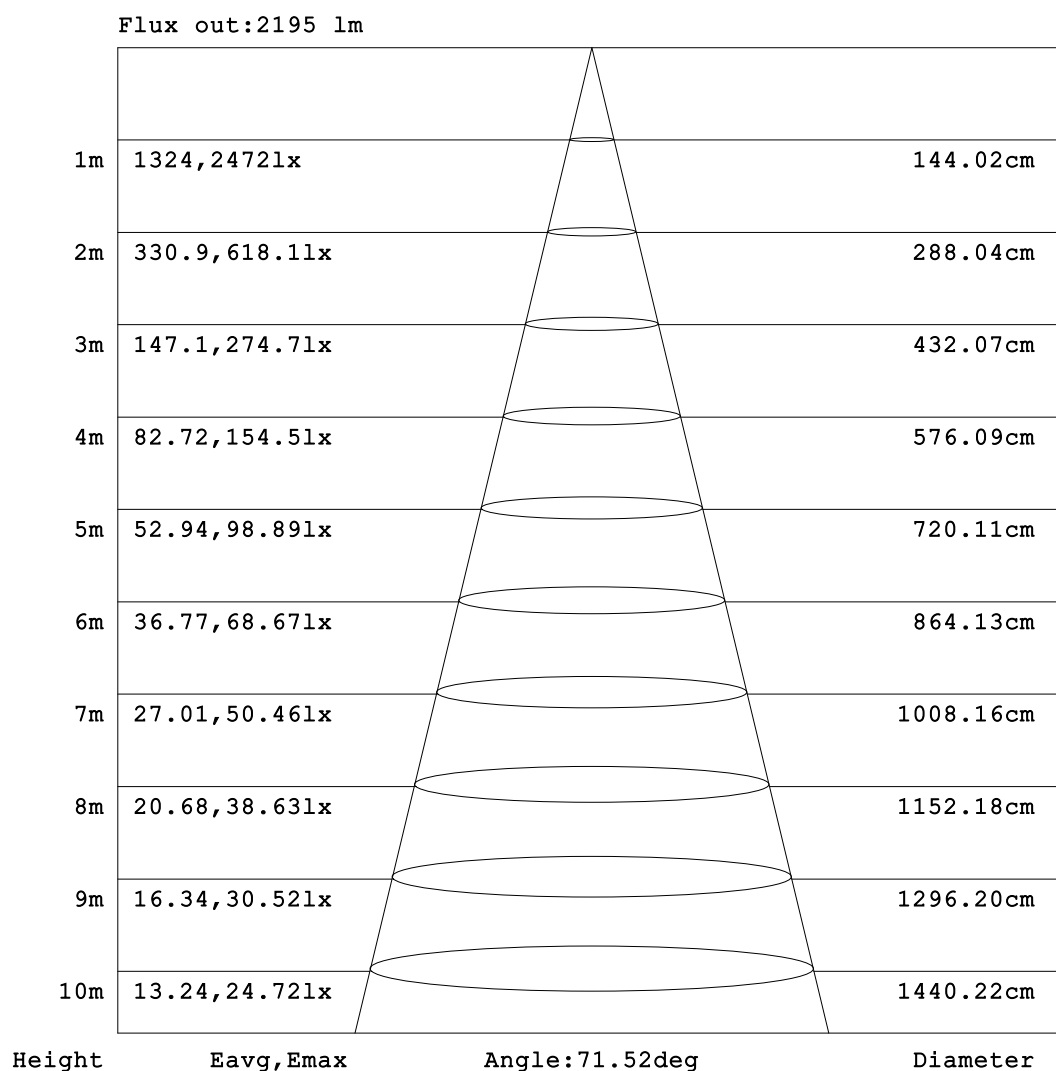


C Range: 0 - 360DEG
C Interval: 30.0DEG
Test Speed: HIGH
Temperature:25.3°C
Operators:
Test Date:2026-04-21

γ Range: 0 - 180DEG
γ Interval: 1.0DEG
Test System:EVERFINE GO-3000H_V1 SYSTEM V2.00.471
Humidity:65.0%
Test Distance:12.177m [K=1.0000]
Remarks:

AAI Figure

Test:U:231.10V I:0.1384A P:31.300W PF:0.9786 Freq:50.00Hz UTHDi:0.00% ITHDi:0.00% KDisp:0 Lamp Flux:3899.94x1 lm		
NAME: 62001000701.30W.4K	TYPE: 62001000701.30W.4K	WEIGHT:
SPEC.: 62001000701.30W.4K	DIM.: 1175*65*42mm	SERIAL No.:
MFR.:	SUR.: 1169*57mm	Shielding Angle:



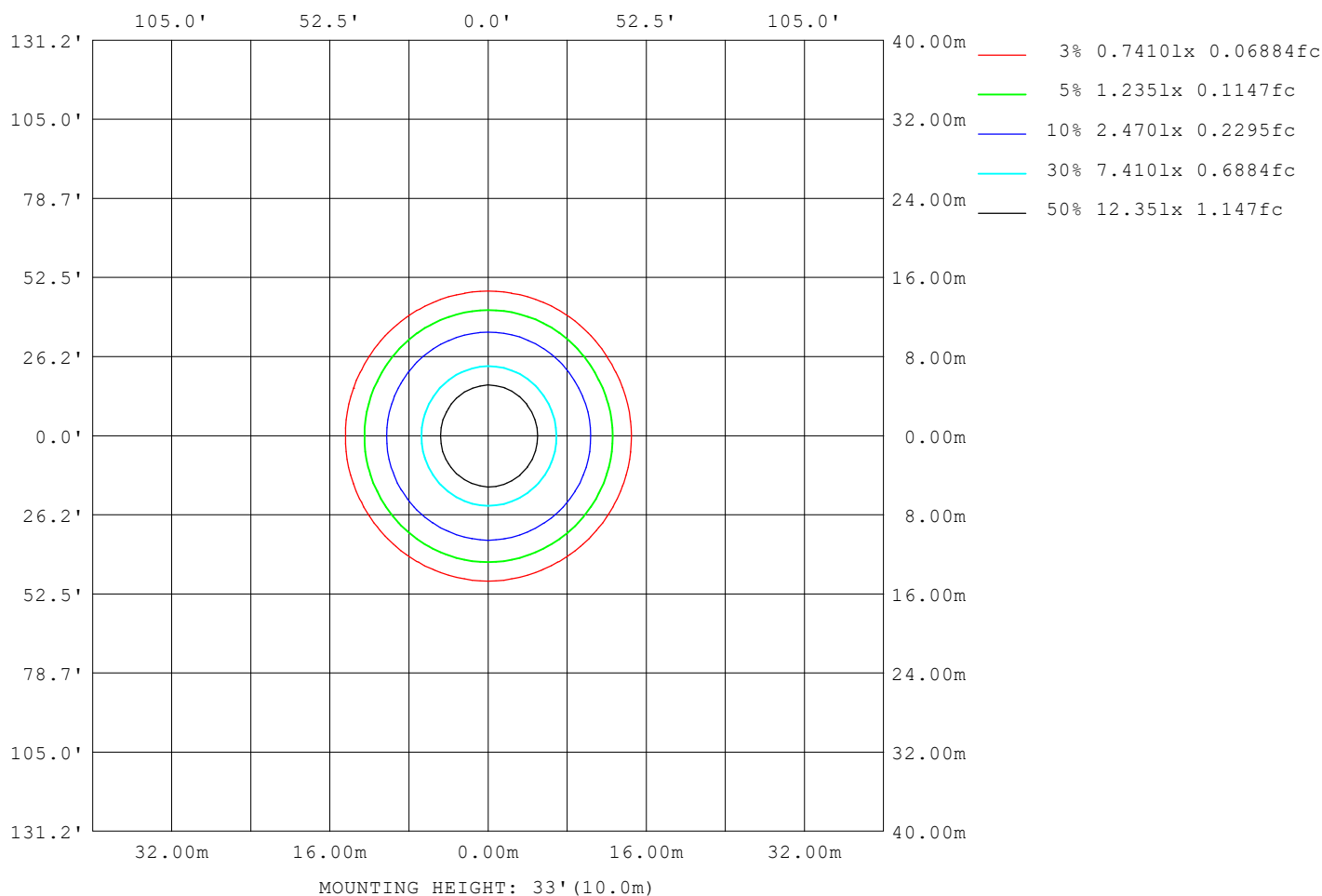
Note:The Curves indicate the illuminated area and the average illumination when the luminaire is at different distance.

C Range: 0 - 360DEG
 C Interval: 30.0DEG
 Test Speed: HIGH
 Temperature:25.3°C
 Operators:
 Test Date:2026-04-21

γ Range: 0 - 180DEG
 γ Interval: 1.0DEG
 Test System:EVERFINE GO-3000H_V1 SYSTEM V2.00.471
 Humidity:65.0%
 Test Distance:12.177m [K=1.0000]
 Remarks:

ISOLUX DIAGRAM

Test: U:231.10V I:0.1384A P:31.300W PF:0.9786 Freq:50.00Hz UTHDi: 0.00% ITHDi: 0.00% KDisp: 0 Lamp Flux: 3899.94x1 lm		
NAME: 62001000701.30W.4K	TYPE: 62001000701.30W.4K	WEIGHT:
SPEC.: 62001000701.30W.4K	DIM.: 1175*65*42mm	SERIAL No.:
MFR.:	SUR.: 1169*57mm	Shielding Angle:



C Range: 0 - 360DEG
 C Interval: 30.0DEG
 Test Speed: HIGH
 Temperature:25.3°C
 Operators:
 Test Date:2026-04-21

γ Range: 0 - 180DEG
 γ Interval: 1.0DEG
 Test System:EVERFINE GO-3000H_V1 SYSTEM V2.00.471
 Humidity:65.0%
 Test Distance:12.177m [K=1.0000]
 Remarks:

LED Avg.L Report

Test:U:231.10V I:0.1384A P:31.300W PF:0.9786 Freq:50.00Hz UTHDi:0.00% ITHDi:0.00% KDisp:0 Lamp Flux:3899.94x1 lm		
NAME: 62001000701.30W.4K	TYPE: 62001000701.30W.4K	WEIGHT:
SPEC.: 62001000701.30W.4K	DIM.: 1175*65*42mm	SERIAL No.:
MFR.:	SUR.: 1169*57mm	Shielding Angle:

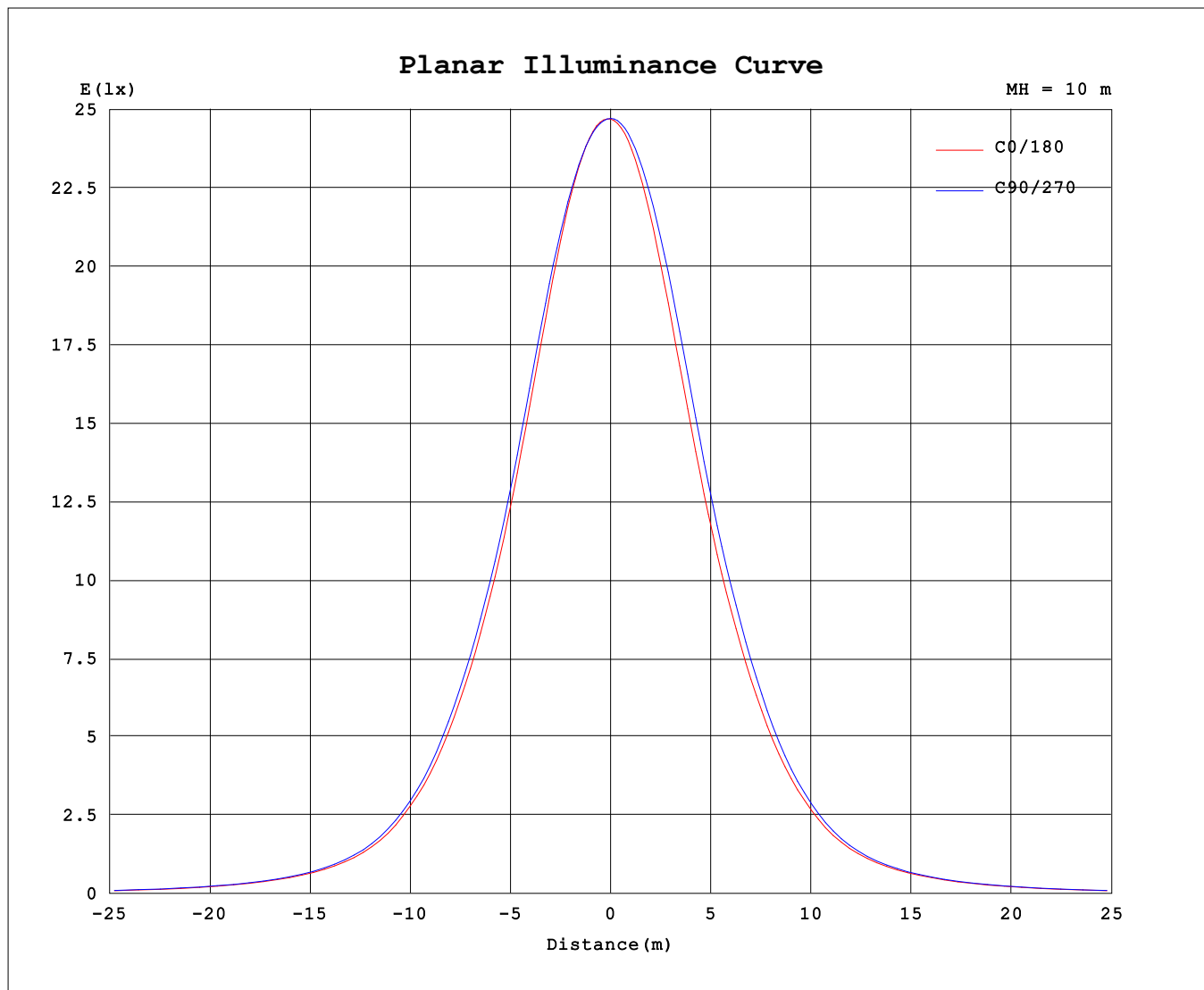
AvgL	cd/m2
L_0~180 (65) av	8225
L_0~180 (75) av	6267
L_0~180 (85) av	3062
L_90~270 (65) av	8618
L_90~270 (75) av	6605
L_90~270 (85) av	3172
L_45 (65) av	8336
L_45 (75) av	6358
L_45 (85) av	3238

Standard: GB/T 29293-2012

C Range: 0 - 360DEG
C Interval: 30.0DEG
Test Speed: HIGH
Temperature:25.3℃
Operators:
Test Date:2026-04-21

γ Range: 0 - 180DEG
γ Interval: 1.0DEG
Test System:EVERFINE GO-3000H_V1 SYSTEM V2.00.471
Humidity:65.0%
Test Distance:12.177m [K=1.0000]
Remarks:

Planar Illuminance Curve



C Range: 0 - 360DEG
C Interval: 30.0DEG
Test Speed: HIGH
Temperature: 25.3°C
Operators:
Test Date: 2026-04-21

γ Range: 0 - 180DEG
 γ Interval: 1.0DEG
Test System: EVERFINE GO-3000H_V1 SYSTEM V2.00.471
Humidity: 65.0%
Test Distance: 12.177m [K=1.0000]
Remarks:

LUMINOUS DISTRIBUTION INTENSITY DATA

Test:U:231.10V I:0.1384A P:31.300W PF:0.9786 Freq:50.00Hz		
UTHDi:0.00% ITHDi:0.00% KDisp:0 Lamp Flux:3899.94x1 lm		
NAME: 62001000701.30W.4K	TYPE: 62001000701.30W.4K	WEIGHT:
SPEC.: 62001000701.30W.4K	DIM.: 1175*65*42mm	SERIAL No.:
MFR.:	SUR.: 1169*57mm	Shielding Angle:

Table--1

UNIT: cd

C (DEG) γ (DEG)	0	30	60	90	120	150	180	210	240	270	300	330						
0	2471	2471	2471	2471	2471	2471	2471	2471	2471	2471	2471	2471						
5	2460	2463	2461	2455	2444	2435	2429	2431	2441	2450	2458	2458						
10	2388	2399	2403	2395	2366	2339	2325	2331	2359	2381	2389	2385						
15	2249	2271	2290	2285	2238	2191	2161	2175	2223	2261	2267	2250						
20	2043	2072	2104	2109	2055	1987	1948	1967	2031	2078	2084	2049						
25	1804	1835	1872	1880	1823	1751	1713	1735	1804	1850	1848	1807						
30	1556	1584	1621	1632	1577	1512	1480	1501	1564	1606	1597	1557						
35	1307	1335	1365	1383	1337	1278	1244	1264	1316	1356	1348	1309						
40	1043	1066	1091	1110	1068	1022	992	1009	1047	1078	1069	1038						
45	790	808	823	837	806	777	756	764	793	814	805	782						
50	565	574	586	601	584	560	546	548	568	582	580	558						
55	413	417	425	435	426	411	406	407	419	426	422	406						
60	309	311	317	327	321	311	307	308	315	320	316	305						
65	229	232	234	242	238	232	230	231	237	239	234	225						
70	165	166	168	175	172	168	166	167	171	173	169	162						
75	106	108	109	114	111	110	108	109	111	112	109	103						
80	54.4	56.0	57.4	59.6	58.5	58.3	55.6	56.4	57.8	57.4	55.8	53.0						
85	16.8	18.0	18.7	19.1	19.7	20.3	18.4	18.8	19.1	17.4	17.6	16.2						
90	0.76	1.42	1.91	2.27	1.89	1.34	0.93	1.61	1.97	1.38	1.95	1.56						
95	0.74	1.04	0.93	0.75	0.92	0.95	1.05	1.14	1.08	1.07	1.09	1.09						
100	0.82	1.04	0.95	1.02	0.96	1.10	1.26	1.15	1.29	1.10	1.21	1.05						
105	1.05	1.23	1.14	1.35	1.26	1.37	1.54	1.44	1.63	1.46	1.49	1.30						
110	1.35	1.53	1.51	1.74	1.66	1.70	1.91	1.84	2.07	1.92	1.91	1.63						
115	1.76	1.95	1.97	2.24	2.13	2.13	2.38	2.32	2.62	2.48	2.42	2.10						
120	2.27	2.46	2.51	2.81	2.68	2.65	2.96	2.91	3.24	3.12	3.04	2.70						
125	2.88	3.06	3.15	3.47	3.34	3.27	3.63	3.62	3.94	3.83	3.72	3.37						
130	3.56	3.76	3.85	4.15	4.02	3.96	4.35	4.35	4.65	4.55	4.43	4.08						
135	4.28	4.47	4.57	4.92	4.78	4.69	5.16	5.17	5.43	5.35	5.21	4.87						
140	5.06	5.26	5.36	5.69	5.55	5.50	5.98	5.99	6.21	6.11	6.00	5.67						
145	5.87	6.08	6.13	6.45	6.34	6.35	6.79	6.80	7.00	6.87	6.77	6.47						
150	6.69	6.91	6.92	7.21	7.11	7.18	7.61	7.58	7.78	7.64	7.57	7.31						
155	7.54	7.73	7.69	7.97	7.87	7.98	8.39	8.32	8.53	8.35	8.31	8.09						
160	8.36	8.51	8.44	8.68	8.61	8.71	9.17	9.05	9.23	9.07	9.06	8.87						
165	9.14	9.26	9.13	9.35	9.31	9.43	9.88	9.69	9.82	9.66	9.67	9.54						
170	9.85	9.91	9.73	9.92	9.87	10.0	10.4	10.2	10.2	10.1	10.2	10.1						
175	10.3	10.3	10.1	10.3	10.2	10.3	10.6	10.4	10.4	10.4	10.3	10.4						
180	10.5	10.4	10.3	10.3	10.3	10.3	10.6	10.4	10.4	10.4	10.4	10.4						

C Range: 0 - 360DEG
C Interval: 30.0DEG
Test Speed: HIGH
Temperature:25.3℃
Operators:
Test Date:2026-04-21

γ Range: 0 - 180DEG
γ Interval: 1.0DEG
Test System:EVERFINE GO-3000H_V1 SYSTEM V2.00.471
Humidity:65.0%
Test Distance:12.177m [K=1.0000]
Remarks: