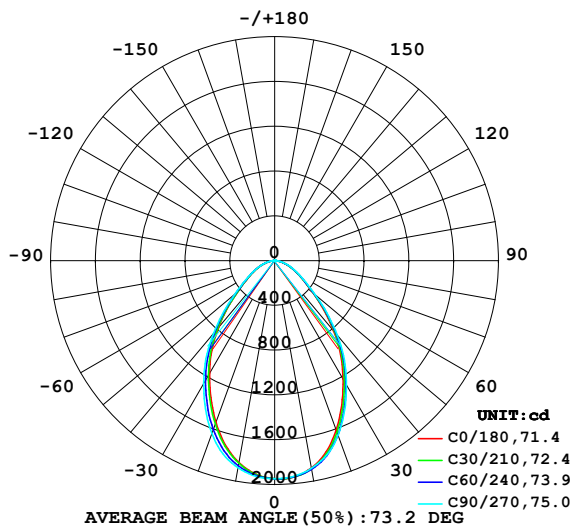


LUMINAIRE PHOTOMETRIC TEST REPORT

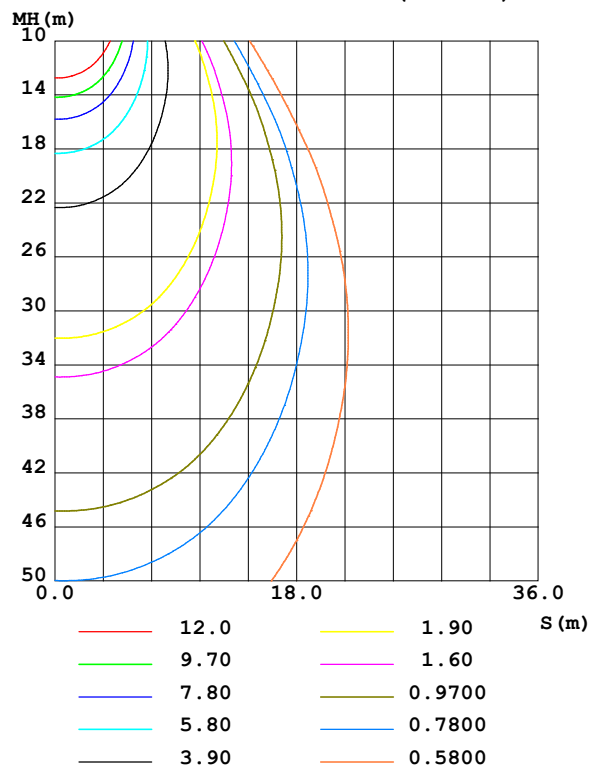
Test:U:231.10V I:0.1162A P:26.106W PF:0.9720 Freq:49.99Hz UTHDi:0.00% ITHDi:0.00% KDisp:0 Lamp Flux:3072.2x1 lm		
NAME: 62001000701.25W.3K	TYPE: 62001000701.25W.3K	WEIGHT:
SPEC.: 62001000701.25W.3K	DIM.: 1175*65*42mm	SERIAL No.:
MFR.:	SUR.: 1169*57mm	Shielding Angle:

DATA OF LAMP		PHOTOMETRIC DATA Eff: 117.68 lm/W			
MODEL	62001000701.25W.3K	I _{max} (cd)	1950	S/MH(C0/180)	0.96
NOMINAL POWER(W)		LOR(%)	100.0	S/MH(C90/270)	1.03
RATED VOLTAGE(V)	230	TOTAL FLUX(lm)	3072.2	η UP,DN(C0-180)	0.3,50.1
NOMINAL FLUX(lm)	3072.2	CIE CLASS	DIRECT	η UP,DN(C180-360)	0.3,49.3
LAMPS INSIDE	1	η up (%)	0.6	CIBSE SHR NOM	1.00
TEST VOLTAGE(V)	230	η down (%)	99.4	CIBSE SHR MAX	1.10

LUMINOUS INTENSITY DISTRIBUTION DIAGRAM



C0 PLANE ISOLUX DIAGRAM (UNIT:lx)



C Range: 0 - 360DEG
C Interval: 30.0DEG
Test Speed: HIGH
Temperature:25.3℃
Operators:
Test Date:2026-04-21

γ Range: 0 - 180DEG
γ Interval: 1.0DEG
Test System:EVERFINE GO-3000H_V1 SYSTEM V2.00.471
Humidity:65.0%
Test Distance:12.177m [K=1.0000]
Remarks:

ZONAL FLUX DIAGRAM

ZONAL FLUX DIAGRAM:

γ	C0	C45	C90	C135	C180	C225	C270	C315	γ	Φ zone	Φ total	%lum, lamp
10	1882	1891	1885	1853	1833	1851	1880	1884	0- 10	182.4	182.4	5.94,5.94
20	1609	1642	1659	1591	1536	1579	1643	1631	10- 20	493.8	676.2	22,22
30	1224	1260	1283	1215	1165	1210	1269	1244	20- 30	654.2	1330	43.3,43.3
40	820.8	848.4	873.5	822.5	781.7	811.1	851.0	831.0	30- 40	646.3	1977	64.3,64.3
50	444.2	456.4	473.1	450.3	429.7	440.1	459.1	448.5	40- 50	483.9	2461	80.1,80.1
60	243.4	247.1	257.2	248.2	241.0	245.2	252.2	244.4	50- 60	299.4	2760	89.8,89.8
70	129.7	131.4	137.5	133.6	130.4	132.9	136.0	130.0	60- 70	183.6	2944	95.8,95.8
80	42.91	44.54	46.79	45.81	43.69	44.86	45.14	42.80	70- 80	91.34	3035	98.8,98.8
90	0.6247	1.274	1.813	1.266	0.7401	1.398	1.069	1.361	80- 90	19.15	3054	99.4,99.4
100	0.6261	0.8004	0.8083	0.8194	0.9908	0.9608	0.8530	0.8820	90-100	0.9238	3055	99.4,99.4
110	1.036	1.184	1.366	1.297	1.504	1.525	1.478	1.371	100-110	1.126	3056	99.5,99.5
120	1.752	1.928	2.196	2.082	2.322	2.412	2.434	2.236	110-120	1.716	3058	99.5,99.5
130	2.766	2.975	3.277	3.124	3.428	3.550	3.582	3.357	120-130	2.408	3060	99.6,99.6
140	3.951	4.137	4.439	4.308	4.669	4.767	4.765	4.552	130-140	2.969	3063	99.7,99.7
150	5.201	5.394	5.644	5.571	5.956	6.002	5.961	5.810	140-150	3.169	3066	99.8,99.8
160	6.513	6.617	6.782	6.766	7.184	7.150	7.075	7.010	150-160	2.897	3069	99.9,99.9
170	7.696	7.670	7.782	7.778	8.186	7.988	7.883	7.921	160-170	2.083	3071	100,100
180	8.186	8.096	8.043	8.063	8.277	8.125	8.077	8.097	170-180	0.7643	3072	100,100
DEG	LUMINOUS INTENSITY:cd									UNIT:lm		

Conical surface Flux(90deg): 2245 lm

%lum = 73.1%

%lamp = 73.1%

Conical surface Flux(130deg): 2863.9 lm

%lum = 93.2%

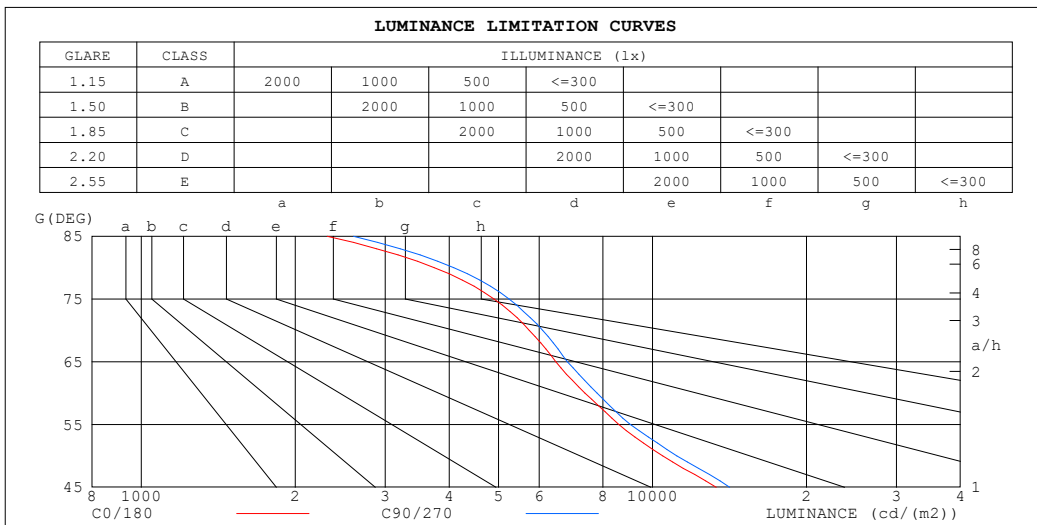
%lamp = 93.2%

C Range: 0 - 360DEG
C Interval: 30.0DEG
Test Speed: HIGH
Temperature:25.3°C
Operators:
Test Date:2026-04-21

γ Range: 0 - 180DEG
 γ Interval: 1.0DEG
Test System:EVERFINE GO-3000H_V1 SYSTEM V2.00.471
Humidity:65.0%
Test Distance:12.177m [K=1.0000]
Remarks:

LUMINANCE LIMITATION CURVES

Test:U:231.10V I:0.1162A P:26.106W PF:0.9720 Freq:49.99Hz UTHDi:0.00% ITHDi:0.00% KDisp:0 Lamp Flux:3072.2x1 lm		
NAME: 62001000701.25W.3K	TYPE: 62001000701.25W.3K	WEIGHT:
SPEC.: 62001000701.25W.3K	DIM.: 1175*65*42mm	SERIAL No.:
MFR.:	SUR.: 1169*57mm	Shielding Angle:



LUMINANCE cd/(m2)		
G (DEG)	C0/180	C90/270
85	2310	2600
80	3742	4084
75	4898	5237
70	5742	6093
65	6467	6818
60	7373	7795
55	8590	9049
50	10465	11154
45	13319	14144

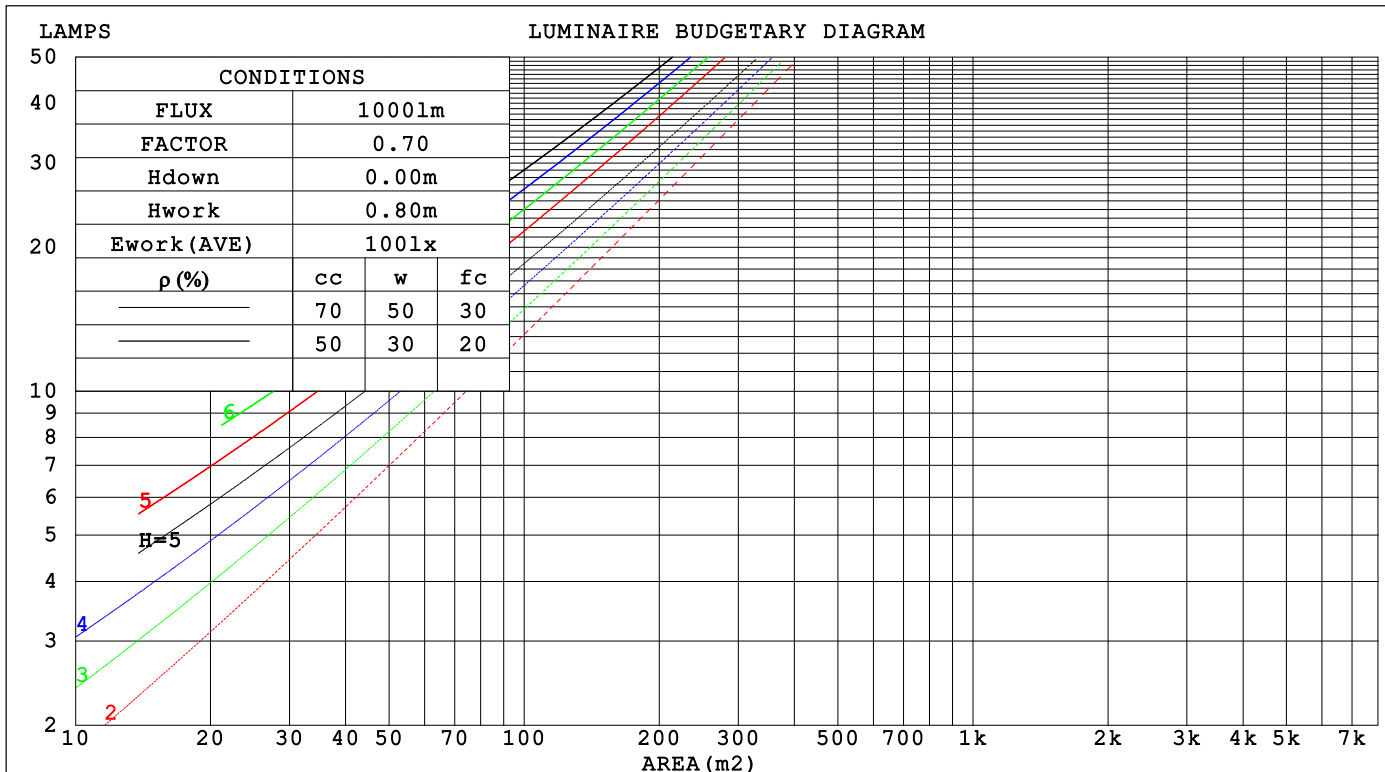
C Range: 0 - 360DEG
C Interval: 30.0DEG
Test Speed: HIGH
Temperature:25.3°C
Operators:
Test Date:2026-04-21

γ Range: 0 - 180DEG
γ Interval: 1.0DEG
Test System:EVERFINE GO-3000H_V1 SYSTEM V2.00.471
Humidity:65.0%
Test Distance:12.177m [K=1.0000]
Remarks:

CU AND LUMINAIRE BUDGETARY ESTIMATE DIAGRAM

Test:U:231.10V I:0.1162A P:26.106W PF:0.9720 Freq:49.99Hz		
UTHDi:0.00% ITHDi:0.00% KDisp:0 Lamp Flux:3072.2x1 lm		
NAME: 62001000701.25W.3K	TYPE: 62001000701.25W.3K	WEIGHT:
SPEC.: 62001000701.25W.3K	DIM.: 1175*65*42mm	SERIAL No.:
MFR.:	SUR.: 1169*57mm	Shielding Angle:

pcc	80%			70%			50%			30%			10%			0
pw	50%	30%	10%	50%	30%	10%	50%	30%	10%	50%	30%	10%	50%	30%	10%	0
pfc	20%			20%			20%			20%			20%			0
RCR	RCR:Room Cavity Ratio Coefficients of Utilization(CU)															
0.0	1.19	1.19	1.19	1.16	1.16	1.16	1.11	1.11	1.11	1.06	1.06	1.06	1.02	1.02	1.02	.99
1.0	1.07	1.04	1.01	1.05	1.02	.99	1.01	.98	.96	.97	.95	.93	.93	.92	.90	.88
2.0	.96	.91	.86	.94	.89	.85	.91	.87	.83	.88	.84	.81	.85	.82	.79	.77
3.0	.87	.80	.75	.85	.79	.74	.83	.77	.73	.80	.75	.72	.77	.74	.70	.68
4.0	.79	.72	.66	.78	.71	.65	.75	.69	.65	.73	.68	.64	.71	.66	.63	.61
5.0	.72	.64	.59	.71	.64	.58	.69	.63	.58	.67	.61	.57	.65	.60	.57	.55
6.0	.66	.58	.53	.65	.58	.52	.63	.57	.52	.62	.56	.52	.60	.55	.51	.49
7.0	.61	.53	.48	.60	.53	.48	.58	.52	.47	.57	.51	.47	.56	.51	.47	.45
8.0	.56	.49	.44	.55	.48	.43	.54	.48	.43	.53	.47	.43	.52	.47	.43	.41
9.0	.52	.45	.40	.52	.45	.40	.50	.44	.40	.49	.44	.39	.48	.43	.39	.38
10.0	.49	.42	.37	.48	.41	.37	.47	.41	.37	.46	.40	.36	.45	.40	.36	.35



C Range: 0 - 360DEG
C Interval: 30.0DEG
Test Speed: HIGH
Temperature:25.3℃
Operators:
Test Date:2026-04-21

γ Range: 0 - 180DEG
γ Interval: 1.0DEG
Test System:EVERFINE GO-3000H_V1 SYSTEM V2.00.471
Humidity:65.0%
Test Distance:12.177m [K=1.0000]
Remarks:

WEC AND CCEC

Test:U:231.10V I:0.1162A P:26.106W PF:0.9720 Freq:49.99Hz			UTHDi:0.00% ITHDi:0.00% KDisp:0			Lamp Flux:3072.2x1 lm		
NAME: 62001000701.25W.3K			TYPE: 62001000701.25W.3K			WEIGHT:		
SPEC.: 62001000701.25W.3K			DIM.: 1175*65*42mm			SERIAL No.:		
MFR.:			SUR.: 1169*57mm			Shielding Angle:		

pcc	80%			70%			50%			30%			10%			0	
pw	50%	30%	10%	50%	30%	10%	50%	30%	10%	50%	30%	10%	50%	30%	10%	0	
pfc	20%			20%			20%			20%			20%			0	
RCR	RCR:Room Cavity Ratio						Wall Exitance Coefficients(WEC)										
0.0																	
1.0	.244	.139	.044	.237	.135	.043	.223	.128	.041	.211	.122	.039	.200	.116	.037		
2.0	.234	.128	.039	.228	.125	.039	.216	.120	.037	.206	.115	.036	.196	.111	.035		
3.0	.220	.117	.035	.215	.115	.035	.205	.111	.034	.196	.107	.033	.187	.104	.032		
4.0	.207	.108	.032	.202	.106	.031	.193	.103	.031	.185	.099	.030	.178	.096	.029		
5.0	.194	.099	.029	.190	.098	.028	.182	.095	.028	.175	.092	.027	.168	.090	.027		
6.0	.183	.092	.026	.179	.090	.026	.172	.088	.026	.166	.086	.025	.159	.084	.025		
7.0	.172	.085	.024	.169	.084	.024	.163	.082	.024	.157	.080	.023	.151	.079	.023		
8.0	.162	.079	.022	.159	.079	.022	.154	.077	.022	.149	.075	.022	.144	.074	.021		
9.0	.154	.074	.021	.151	.074	.021	.146	.072	.020	.141	.071	.020	.137	.069	.020		
10.0	.146	.070	.019	.143	.069	.019	.139	.068	.019	.134	.067	.019	.130	.066	.019		

pcc	80%			70%			50%			30%			10%			0	
pw	50%	30%	10%	50%	30%	10%	50%	30%	10%	50%	30%	10%	50%	30%	10%	0	
pfc	20%			20%			20%			20%			20%			0	
RCR	RCR:Room Cavity Ratio						Ceiling Cavity Exitance Coefficients (CCEC)										
0.0	.195	.195	.195	.167	.167	.167	.114	.114	.114	.065	.065	.065	.021	.021	.021		
1.0	.180	.161	.144	.154	.138	.124	.105	.095	.086	.061	.055	.050	.019	.018	.016		
2.0	.169	.137	.110	.145	.118	.095	.099	.081	.066	.057	.047	.039	.018	.015	.013		
3.0	.160	.119	.086	.137	.102	.074	.094	.071	.052	.054	.041	.031	.017	.013	.010		
4.0	.151	.105	.069	.130	.090	.060	.089	.063	.042	.052	.037	.025	.017	.012	.008		
5.0	.143	.094	.057	.123	.081	.050	.085	.057	.035	.049	.033	.021	.016	.011	.007		
6.0	.136	.085	.048	.117	.074	.042	.081	.052	.030	.047	.030	.018	.015	.010	.006		
7.0	.130	.078	.041	.112	.068	.036	.077	.047	.026	.045	.028	.015	.014	.009	.005		
8.0	.124	.072	.036	.107	.062	.032	.074	.044	.022	.043	.026	.013	.014	.008	.004		
9.0	.118	.067	.032	.102	.058	.028	.071	.041	.020	.041	.024	.012	.013	.008	.004		
10.0	.113	.063	.029	.098	.054	.025	.068	.038	.018	.040	.023	.011	.013	.007	.004		

C Range: 0 - 360DEG
C Interval: 30.0DEG
Test Speed: HIGH
Temperature:25.3℃
Operators:
Test Date:2026-04-21

γ Range: 0 - 180DEG
γ Interval: 1.0DEG
Test System:EVERFINE GO-3000H_V1 SYSTEM V2.00.471
Humidity:65.0%
Test Distance:12.177m [K=1.0000]
Remarks:

UGR(Unified Glare Rating) Table

Test:U:231.10V I:0.1162A P:26.106W PF:0.9720 Freq:49.99Hz UTHDi:0.00% ITHDi:0.00% KDisp:0 Lamp Flux:3072.2x1 lm										
NAME: 62001000701.25W.3K					TYPE: 62001000701.25W.3K			WEIGHT:		
SPEC.: 62001000701.25W.3K					DIM.: 1175*65*42mm			SERIAL No.:		
MFR.:					SUR.: 1169*57mm			Shielding Angle:		
ceiling/cavity	0.7	0.7	0.5	0.5	0.3	0.7	0.7	0.5	0.5	0.3
walls	0.5	0.3	0.5	0.3	0.3	0.5	0.3	0.5	0.3	0.3
working plane	0.2	0.2	0.2	0.2	0.2	0.2	0.2	0.2	0.2	0.2
Room dimensions	Viewed crosswise					Viewed endwise				
x = 2H y = 2H	19.4	20.7	19.6	20.9	21.0	19.6	20.9	19.9	21.1	21.3
3H	20.1	21.3	20.4	21.5	21.7	20.3	21.5	20.6	21.7	22.0
4H	20.4	21.5	20.7	21.7	22.0	20.6	21.7	20.9	22.0	22.2
6H	20.5	21.6	20.9	21.8	22.1	20.8	21.8	21.1	22.1	22.4
8H	20.5	21.5	20.9	21.8	22.1	20.8	21.8	21.1	22.1	22.4
12H	20.5	21.5	20.9	21.8	22.1	20.8	21.8	21.1	22.0	22.4
4H 2H	19.7	20.8	20.0	21.0	21.3	19.8	20.9	20.1	21.2	21.4
3H	20.6	21.5	20.9	21.8	22.1	20.8	21.7	21.1	22.0	22.3
4H	20.9	21.8	21.3	22.1	22.5	21.2	22.0	21.5	22.3	22.7
6H	21.2	21.9	21.6	22.3	22.7	21.4	22.2	21.8	22.5	22.9
8H	21.2	21.9	21.6	22.3	22.7	21.5	22.2	21.9	22.5	22.9
12H	21.2	21.9	21.7	22.3	22.7	21.5	22.1	21.9	22.5	22.9
8H 4H	21.1	21.8	21.5	22.1	22.5	21.2	22.0	21.7	22.3	22.7
6H	21.4	22.0	21.8	22.4	22.8	21.6	22.2	22.0	22.6	23.0
8H	21.5	22.0	21.9	22.4	22.9	21.7	22.2	22.1	22.6	23.1
12H	21.5	21.9	22.0	22.4	22.9	21.7	22.2	22.2	22.6	23.1
12H 4H	21.0	21.7	21.5	22.1	22.5	21.2	21.9	21.7	22.3	22.7
6H	21.4	21.9	21.8	22.3	22.8	21.6	22.1	22.0	22.5	23.0
8H	21.5	21.9	22.0	22.4	22.9	21.7	22.1	22.2	22.6	23.1
Variations with the observer position at spacings(CIE Pub.117):										
S = 1.0H	+ 0.6 / - 0.7					+ 0.6 / - 0.7				
1.5H	+ 0.5 / - 0.5					+ 0.5 / - 0.4				
2.0H	+ 1.2 / - 0.8					+ 1.3 / - 0.8				

CIE Pub.117, 3072 lm Total Lamp Luminous Flux Corrected (8log(F/F0) = 3.9)
Area: 0.066 m2

C Range: 0 - 360DEG
C Interval: 30.0DEG
Test Speed: HIGH
Temperature:25.3℃
Operators:
Test Date:2026-04-21

γ Range: 0 - 180DEG
γ Interval: 1.0DEG
Test System:EVERFINE GO-3000H_V1 SYSTEM V2.00.471
Humidity:65.0%
Test Distance:12.177m [K=1.0000]
Remarks:

UTILIZATION FACTORS TABLE

Test:U:231.10V I:0.1162A P:26.106W PF:0.9720 Freq:49.99Hz		
UTHDi:0.00% ITHDi:0.00% KDisp:0 Lamp Flux:3072.2x1 lm		
NAME: 62001000701.25W.3K	TYPE: 62001000701.25W.3K	WEIGHT:
SPEC.: 62001000701.25W.3K	DIM.: 1175*65*42mm	SERIAL No.:
MFR.:	SUR.: 1169*57mm	Shielding Angle:

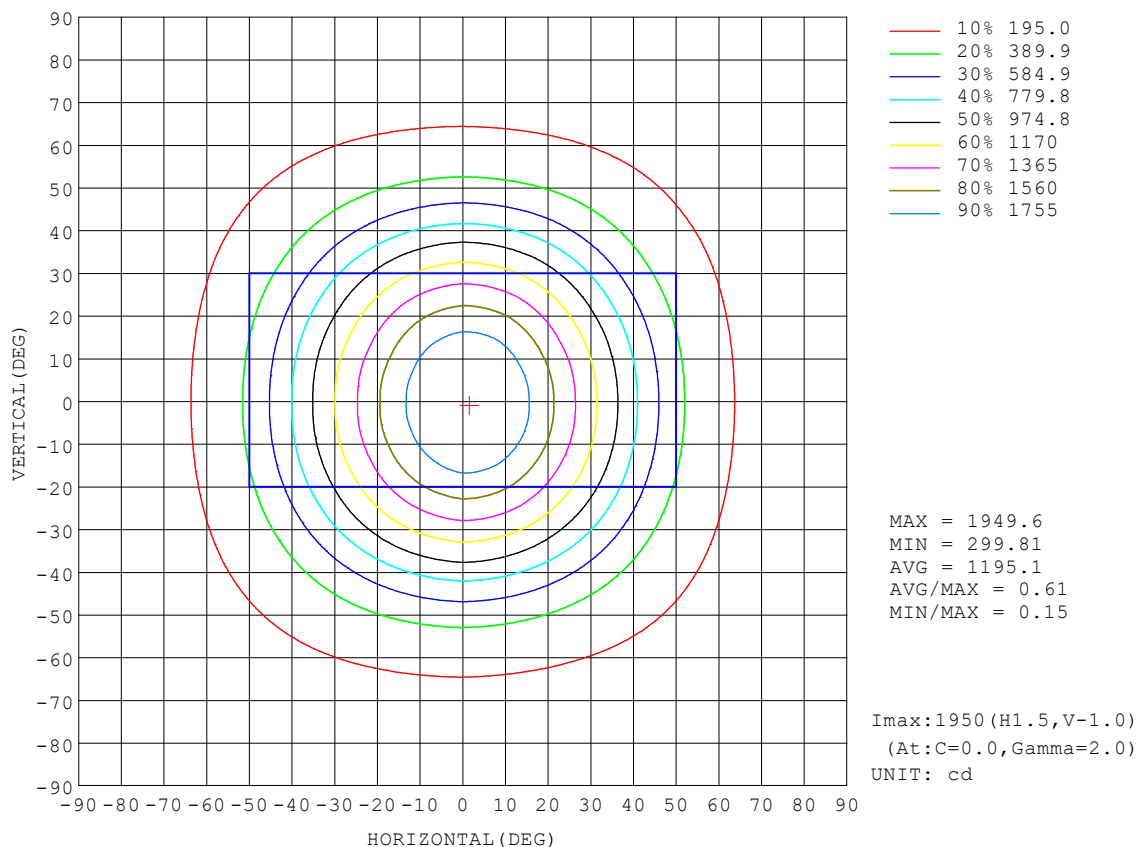
REFLECTANCE										
Ceiling	0.8	0.8	0.8	0.7	0.7	0.7	0.5	0.5	0.5	0
Walls	0.7	0.5	0.3	0.7	0.5	0.3	0.7	0.5	0.3	0
Working plane	0.2	0.2	0.2	0.2	0.2	0.2	0.2	0.2	0.2	0
ROOM INDEX	UTILIZATION FACTORS (PERCENT) $k(RI) \times RCR = 5$									
$k = 0.60$	69	60	54	69	60	54	68	59	54	48
0.80	79	69	64	78	69	63	76	68	63	57
1.00	86	77	72	85	77	71	83	77	71	65
1.25	92	84	78	91	83	78	88	82	77	71
1.50	96	88	83	95	88	83	92	86	81	75
2.00	101	95	90	100	94	89	96	91	87	81
2.50	104	98	94	102	97	93	99	94	91	83
3.00	107	101	97	105	100	96	101	97	94	86
4.00	110	105	102	107	104	100	103	100	98	89
5.00	111	108	105	109	106	103	105	102	100	91
ROOM INDEX	UF (total)									Direct
According to DIN EN 13032-2 2004			Suspended					SHRNOM = 1.25		

C Range: 0 - 360DEG
C Interval: 30.0DEG
Test Speed: HIGH
Temperature: 25.3°C
Operators:
Test Date: 2026-04-21

γ Range: 0 - 180DEG
 γ Interval: 1.0DEG
Test System: EVERFINE GO-3000H_V1 SYSTEM V2.00.471
Humidity: 65.0%
Test Distance: 12.177m [K=1.0000]
Remarks:

ISOCANDELA DIAGRAM

Test:U:231.10V I:0.1162A P:26.106W PF:0.9720 Freq:49.99Hz UTHDi:0.00% ITHDi:0.00% KDisp:0 Lamp Flux:3072.2x1 lm		
NAME: 62001000701.25W.3K	TYPE: 62001000701.25W.3K	WEIGHT:
SPEC.: 62001000701.25W.3K	DIM.: 1175*65*42mm	SERIAL No.:
MFR.:	SUR.: 1169*57mm	Shielding Angle:

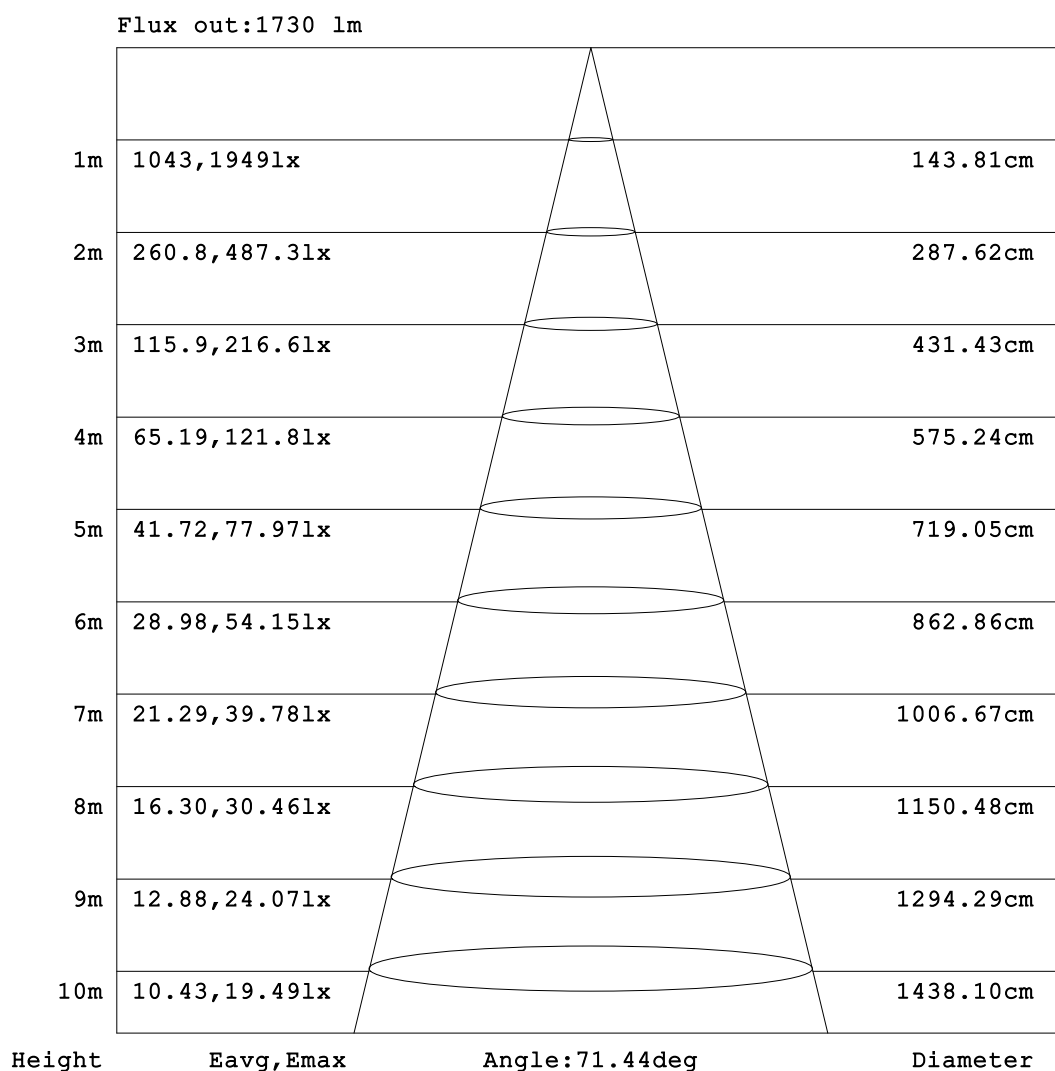


C Range: 0 - 360DEG
C Interval: 30.0DEG
Test Speed: HIGH
Temperature:25.3°C
Operators:
Test Date:2026-04-21

γ Range: 0 - 180DEG
γ Interval: 1.0DEG
Test System:EVERFINE GO-3000H_V1 SYSTEM V2.00.471
Humidity:65.0%
Test Distance:12.177m [K=1.0000]
Remarks:

AAI Figure

Test:U:231.10V I:0.1162A P:26.106W PF:0.9720 Freq:49.99Hz UTHDi:0.00% ITHDi:0.00% KDisp:0 Lamp Flux:3072.2x1 lm		
NAME: 62001000701.25W.3K	TYPE: 62001000701.25W.3K	WEIGHT:
SPEC.: 62001000701.25W.3K	DIM.: 1175*65*42mm	SERIAL No.:
MFR.:	SUR.: 1169*57mm	Shielding Angle:



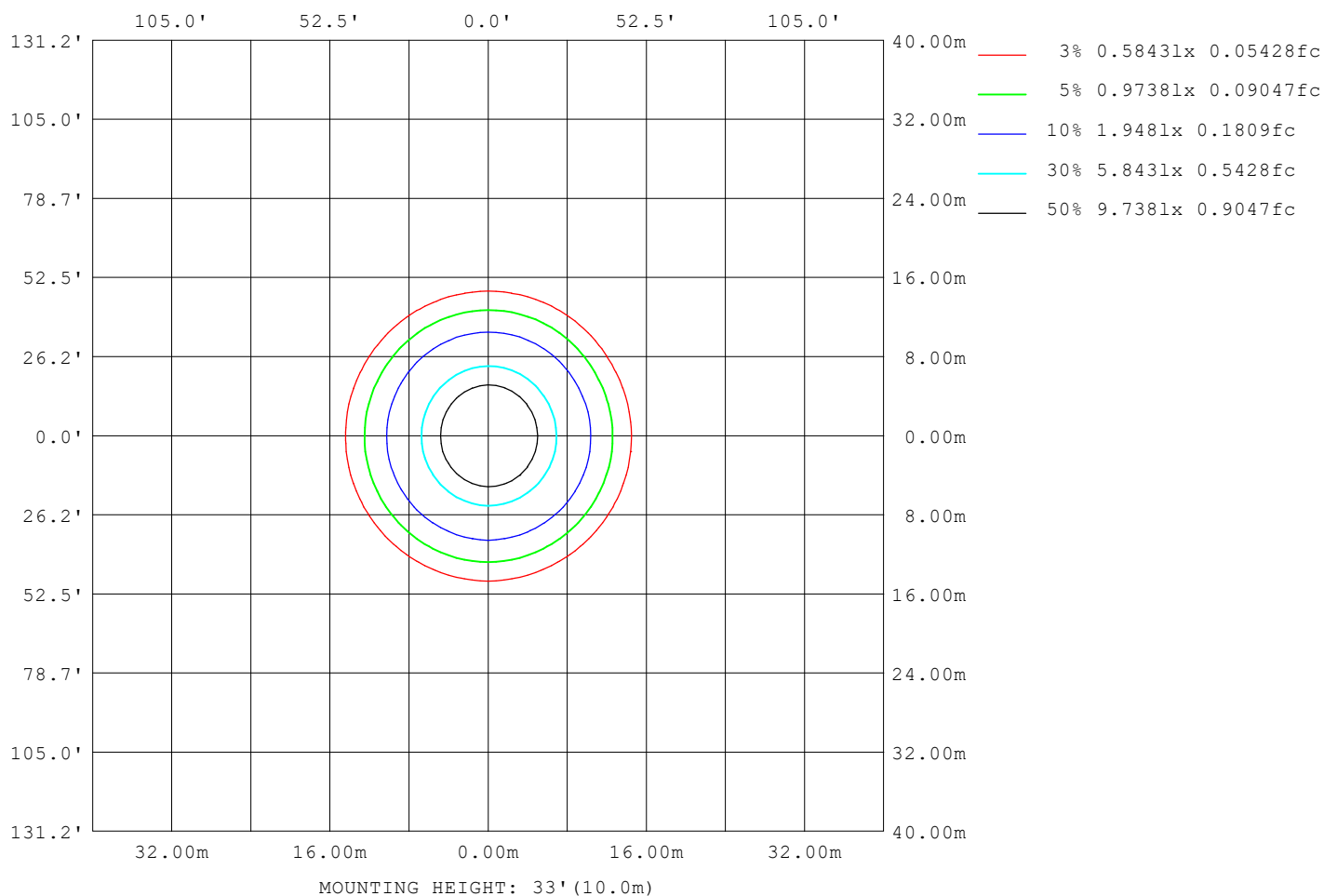
Note:The Curves indicate the illuminated area and the average illumination when the luminaire is at different distance.

C Range: 0 - 360DEG
 C Interval: 30.0DEG
 Test Speed: HIGH
 Temperature:25.3°C
 Operators:
 Test Date:2026-04-21

γ Range: 0 - 180DEG
 γ Interval: 1.0DEG
 Test System:EVERFINE GO-3000H_V1 SYSTEM V2.00.471
 Humidity:65.0%
 Test Distance:12.177m [K=1.0000]
 Remarks:

ISOLUX DIAGRAM

Test:U:231.10V I:0.1162A P:26.106W PF:0.9720 Freq:49.99Hz UTHDi:0.00% ITHDi:0.00% KDisp:0 Lamp Flux:3072.2x1 lm		
NAME: 62001000701.25W.3K	TYPE: 62001000701.25W.3K	WEIGHT:
SPEC.: 62001000701.25W.3K	DIM.: 1175*65*42mm	SERIAL No.:
MFR.:	SUR.: 1169*57mm	Shielding Angle:



C Range: 0 - 360DEG
C Interval: 30.0DEG
Test Speed: HIGH
Temperature:25.3°C
Operators:
Test Date:2026-04-21

γ Range: 0 - 180DEG
γ Interval: 1.0DEG
Test System:EVERFINE GO-3000H_V1 SYSTEM V2.00.471
Humidity:65.0%
Test Distance:12.177m [K=1.0000]
Remarks:

LED Avg.L Report

Test:U:231.10V I:0.1162A P:26.106W PF:0.9720 Freq:49.99Hz UTHDi:0.00% ITHDi:0.00% KDisp:0 Lamp Flux:3072.2x1 lm		
NAME: 62001000701.25W.3K	TYPE: 62001000701.25W.3K	WEIGHT:
SPEC.: 62001000701.25W.3K	DIM.: 1175*65*42mm	SERIAL No.:
MFR.:	SUR.: 1169*57mm	Shielding Angle:

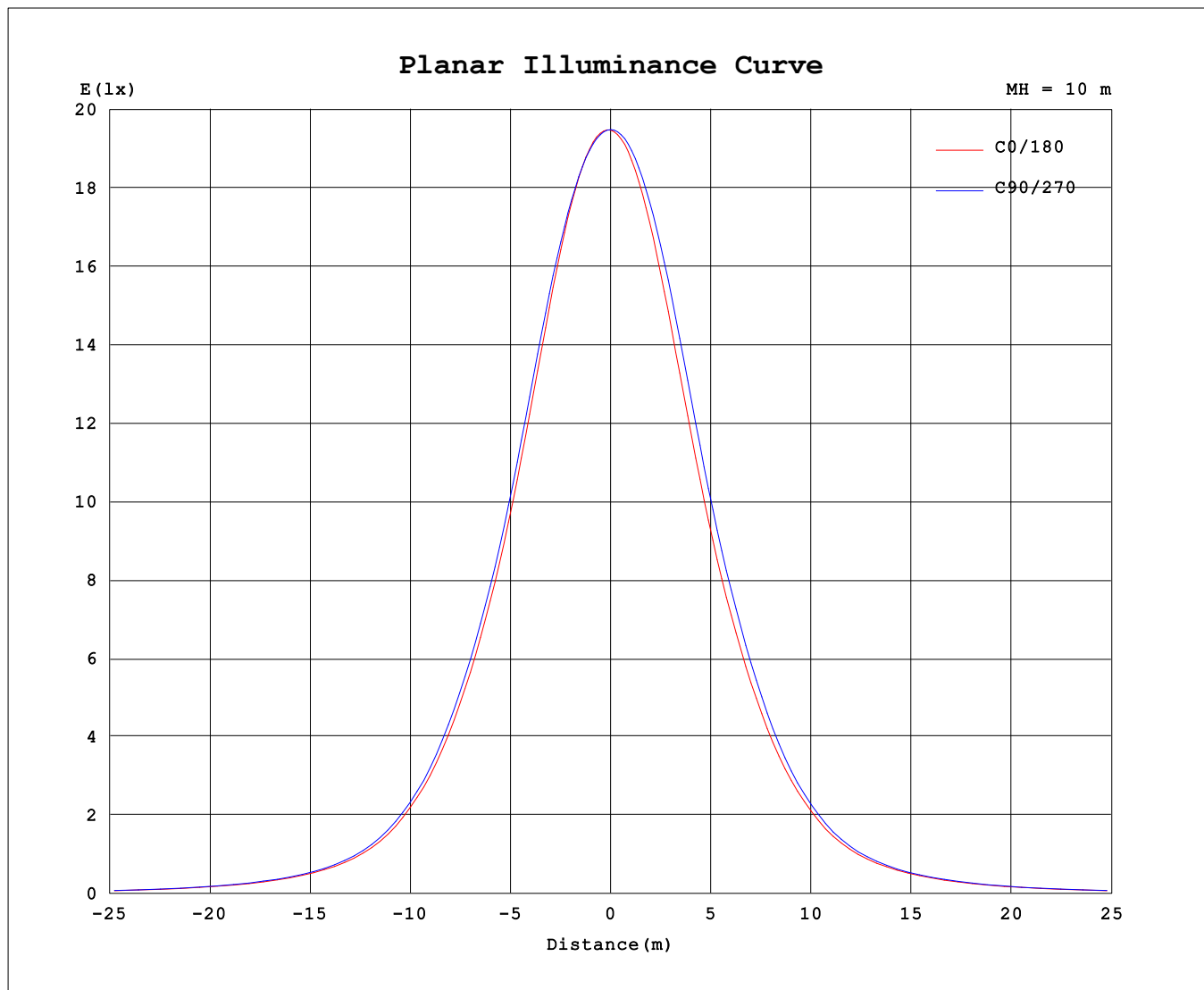
AvgL	cd/m2
L_0~180 (65) av	6470
L_0~180 (75) av	4932
L_0~180 (85) av	2423
L_90~270 (65) av	6778
L_90~270 (75) av	5194
L_90~270 (85) av	2499
L_45 (65) av	6556
L_45 (75) av	4999
L_45 (85) av	2543

Standard: GB/T 29293-2012

C Range: 0 - 360DEG
C Interval: 30.0DEG
Test Speed: HIGH
Temperature:25.3℃
Operators:
Test Date:2026-04-21

γ Range: 0 - 180DEG
γ Interval: 1.0DEG
Test System:EVERFINE GO-3000H_V1 SYSTEM V2.00.471
Humidity:65.0%
Test Distance:12.177m [K=1.0000]
Remarks:

Planar Illuminance Curve



C Range: 0 - 360DEG
C Interval: 30.0DEG
Test Speed: HIGH
Temperature: 25.3°C
Operators:
Test Date: 2026-04-21

γ Range: 0 - 180DEG
 γ Interval: 1.0DEG
Test System: EVERFINE GO-3000H_V1 SYSTEM V2.00.471
Humidity: 65.0%
Test Distance: 12.177m [K=1.0000]
Remarks:

LUMINOUS DISTRIBUTION INTENSITY DATA

Test:U:231.10V I:0.1162A P:26.106W PF:0.9720 Freq:49.99Hz		
UTHDi:0.00% ITHDi:0.00% KDisp:0 Lamp Flux:3072.2x1 lm		
NAME: 62001000701.25W.3K	TYPE: 62001000701.25W.3K	WEIGHT:
SPEC.: 62001000701.25W.3K	DIM.: 1175*65*42mm	SERIAL No.:
MFR.:	SUR.: 1169*57mm	Shielding Angle:

Table--1

UNIT: cd

C (DEG) γ (DEG)	0	30	60	90	120	150	180	210	240	270	300	330						
0	1949	1949	1949	1949	1949	1949	1949	1949	1949	1949	1949	1949						
5	1940	1942	1940	1934	1925	1919	1915	1917	1926	1934	1939	1939						
10	1882	1889	1893	1885	1863	1843	1833	1839	1862	1880	1886	1881						
15	1772	1787	1802	1798	1761	1725	1705	1716	1756	1787	1790	1775						
20	1609	1630	1655	1659	1616	1566	1536	1553	1604	1643	1646	1615						
25	1420	1443	1471	1479	1434	1379	1350	1369	1425	1462	1459	1425						
30	1224	1246	1274	1283	1240	1190	1165	1184	1236	1269	1261	1228						
35	1029	1050	1073	1087	1052	1006	980	997	1040	1071	1065	1032						
40	821	839	858	874	841	805	782	795	827	851	844	818						
45	622	637	647	660	634	612	596	601	626	643	636	616						
50	444	452	461	473	460	441	430	432	448	459	457	440						
55	325	328	334	342	335	324	320	320	330	335	332	320						
60	243	245	249	257	252	244	241	242	249	252	249	240						
65	180	182	184	190	187	182	180	182	186	188	184	177						
70	130	131	132	138	135	132	130	131	135	136	133	127						
75	83.7	84.9	85.8	89.4	87.6	86.2	84.8	85.3	87.4	88.0	85.5	81.4						
80	42.9	44.1	45.0	46.8	45.8	45.8	43.7	44.2	45.5	45.1	44.0	41.6						
85	13.3	14.2	14.6	15.0	15.4	16.0	14.6	14.7	15.1	13.8	13.9	12.7						
90	0.62	1.07	1.48	1.81	1.50	1.03	0.74	1.28	1.51	1.07	1.49	1.23						
95	0.63	0.83	0.76	0.60	0.71	0.80	0.84	0.90	0.85	0.71	0.86	0.88						
100	0.63	0.83	0.77	0.81	0.76	0.88	0.99	0.91	1.01	0.85	0.96	0.81						
105	0.81	0.97	0.88	1.06	0.97	1.06	1.21	1.11	1.27	1.11	1.18	0.98						
110	1.04	1.21	1.16	1.37	1.26	1.33	1.50	1.41	1.64	1.48	1.49	1.25						
115	1.34	1.53	1.52	1.76	1.63	1.69	1.88	1.81	2.06	1.92	1.91	1.64						
120	1.75	1.91	1.94	2.20	2.08	2.08	2.32	2.26	2.56	2.43	2.38	2.09						
125	2.22	2.40	2.43	2.71	2.59	2.56	2.85	2.81	3.10	2.99	2.92	2.63						
130	2.77	2.95	3.00	3.28	3.14	3.11	3.43	3.41	3.69	3.58	3.51	3.21						
135	3.36	3.53	3.57	3.88	3.75	3.71	4.06	4.02	4.26	4.15	4.10	3.82						
140	3.95	4.12	4.15	4.44	4.31	4.30	4.67	4.67	4.87	4.77	4.70	4.40						
145	4.57	4.75	4.77	5.05	4.94	4.96	5.32	5.29	5.48	5.36	5.33	5.05						
150	5.20	5.40	5.39	5.64	5.53	5.61	5.96	5.91	6.10	5.96	5.93	5.69						
155	5.87	6.06	6.00	6.22	6.13	6.24	6.56	6.50	6.68	6.52	6.50	6.32						
160	6.51	6.66	6.57	6.78	6.71	6.82	7.18	7.07	7.23	7.07	7.09	6.93						
165	7.14	7.24	7.13	7.33	7.26	7.38	7.73	7.55	7.69	7.53	7.58	7.43						
170	7.70	7.74	7.60	7.78	7.70	7.85	8.19	7.93	8.04	7.88	7.97	7.88						
175	8.09	8.09	7.91	8.04	7.99	8.02	8.27	8.13	8.13	8.08	8.06	8.13						
180	8.19	8.17	8.02	8.04	8.06	8.07	8.28	8.13	8.12	8.08	8.08	8.12						

C Range: 0 - 360DEG
C Interval: 30.0DEG
Test Speed: HIGH
Temperature:25.3℃
Operators:
Test Date:2026-04-21

γ Range: 0 - 180DEG
γ Interval: 1.0DEG
Test System:EVERFINE GO-3000H_V1 SYSTEM V2.00.471
Humidity:65.0%
Test Distance:12.177m [K=1.0000]
Remarks: