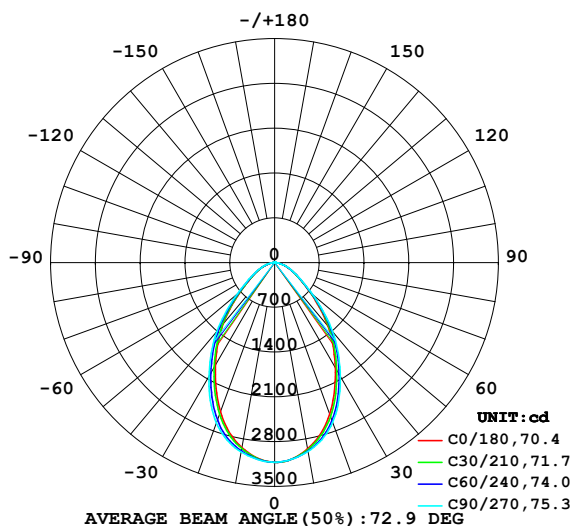


LUMINAIRE PHOTOMETRIC TEST REPORT

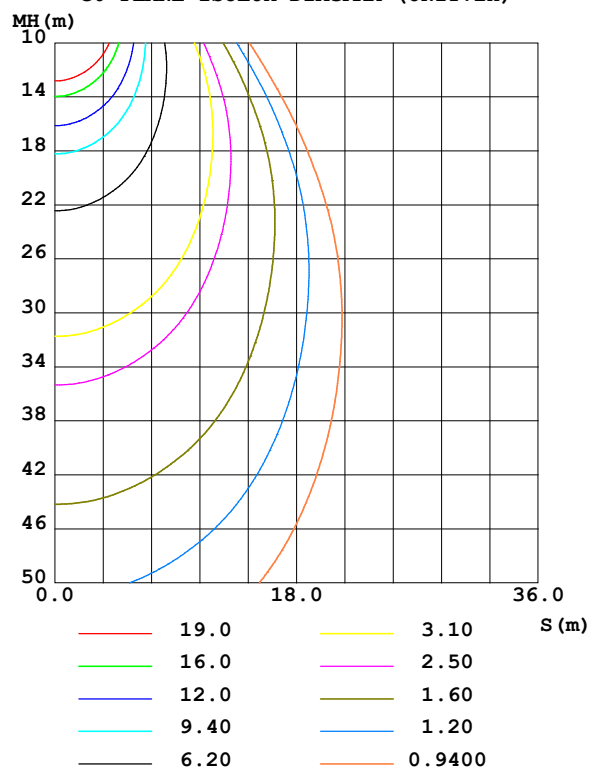
Test:U:231.09V I:0.1868A P:42.173W PF:0.9769 Freq:49.99Hz UTHDi:0.00% ITHDi:0.00% KDisp:0 Lamp Flux:4906.61x1 lm		
NAME: 62001000501.42W.4K	TYPE: 62001000501.42W.4K	WEIGHT:
SPEC.: 62001000501.42W.4K	DIM.: 1438*65*42mm	SERIAL No.:
MFR.:	SUR.: 1432*57mm	Shielding Angle:

DATA OF LAMP		PHOTOMETRIC DATA Eff: 116.34 lm/W			
MODEL	62001000501.42W.4K	I _{max} (cd)	3122	S/MH(C0/180)	0.96
NOMINAL POWER(W)		LOR(%)	100.0	S/MH(C90/270)	1.04
RATED VOLTAGE(V)	230	TOTAL FLUX(lm)	4906.6	η UP,DN(C0-180)	0.3,50.0
NOMINAL FLUX(lm)	4906.61	CIE CLASS	DIRECT	η UP,DN(C180-360)	0.3,49.4
LAMPS INSIDE	1	η up (%)	0.6	CIBSE SHR NOM	1.00
TEST VOLTAGE(V)	230	η down (%)	99.4	CIBSE SHR MAX	1.10

LUMINOUS INTENSITY DISTRIBUTION DIAGRAM



C0 PLANE ISOLUX DIAGRAM (UNIT:lx)



C Range: 0 - 360DEG
C Interval: 30.0DEG
Test Speed: HIGH
Temperature:25.3℃
Operators:
Test Date:2026-04-21

γ Range: 0 - 180DEG
γ Interval: 1.0DEG
Test System:EVERFINE GO-3000H_V1 SYSTEM V2.00.471
Humidity:65.0%
Test Distance:12.177m [K=1.0000]
Remarks:

ZONAL FLUX DIAGRAM

ZONAL FLUX DIAGRAM:

γ	C0	C45	C90	C135	C180	C225	C270	C315	γ	Φ zone	Φ total	%lum, lamp
10	2960	2981	2999	2969	2939	2972	3007	2981	0- 10	290.8	290.8	5.93,5.93
20	2521	2592	2657	2564	2478	2568	2668	2587	10- 20	787.8	1079	22,22
30	1900	1983	2058	1943	1851	1945	2056	1966	20- 30	1046	2124	43.3,43.3
40	1299	1357	1413	1321	1252	1317	1404	1340	30- 40	1027	3151	64.2,64.2
50	725.7	749.4	774.9	724.8	688.7	714.6	762.8	737.9	40- 50	785.0	3936	80.2,80.2
60	392.4	398.1	405.7	385.6	371.1	378.7	396.7	390.1	50- 60	479.7	4416	90,90
70	210.7	213.2	216.8	203.3	193.8	196.8	208.6	206.9	60- 70	288.6	4705	95.9,95.9
80	73.81	74.29	73.97	67.79	63.06	64.04	69.18	71.13	70- 80	141.5	4846	98.8,98.8
90	1.323	2.416	2.075	1.772	1.093	1.967	1.270	1.984	80- 90	31.31	4878	99.4,99.4
100	1.001	1.232	1.309	1.309	1.514	1.530	1.456	1.434	90-100	1.427	4879	99.4,99.4
110	1.672	1.940	2.311	2.140	2.334	2.463	2.501	2.208	100-110	1.828	4881	99.5,99.5
120	2.787	3.175	3.677	3.414	3.622	3.886	3.968	3.585	110-120	2.785	4884	99.5,99.5
130	4.369	4.814	5.394	5.066	5.326	5.643	5.787	5.332	120-130	3.872	4888	99.6,99.6
140	6.315	6.737	7.281	7.023	7.329	7.628	7.711	7.298	130-140	4.767	4892	99.7,99.7
150	8.399	8.751	9.195	9.039	9.413	9.615	9.623	9.313	140-150	5.107	4897	99.8,99.8
160	10.47	10.66	10.99	10.93	11.40	11.42	11.36	11.21	150-160	4.660	4902	99.9,99.9
170	12.40	12.31	12.48	12.50	13.08	12.77	12.63	12.68	160-170	3.343	4905	100,100
180	13.12	12.95	12.92	12.96	13.25	13.02	12.96	13.00	170-180	1.226	4907	100,100
DEG	LUMINOUS INTENSITY:cd									UNIT:lm		

Conical surface Flux(90deg): 3585.8 lm

%lum = 73.1%

%lamp = 73.1%

Conical surface Flux(130deg): 4580.2 lm

%lum = 93.3%

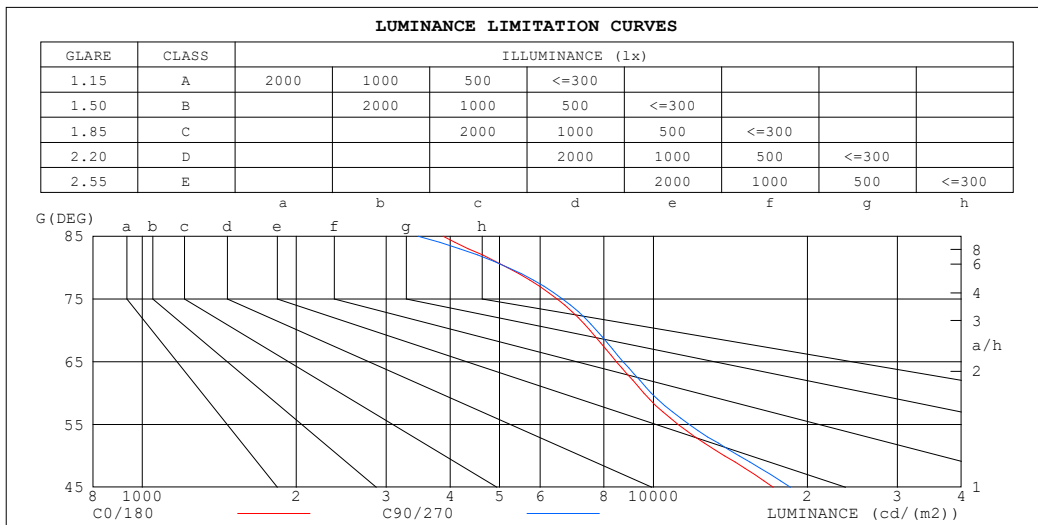
%lamp = 93.3%

C Range: 0 - 360DEG
C Interval: 30.0DEG
Test Speed: HIGH
Temperature:25.3℃
Operators:
Test Date:2026-04-21

γ Range: 0 - 180DEG
 γ Interval: 1.0DEG
Test System:EVERFINE GO-3000H_V1 SYSTEM V2.00.471
Humidity:65.0%
Test Distance:12.177m [K=1.0000]
Remarks:

LUMINANCE LIMITATION CURVES

Test:U:231.09V I:0.1868A P:42.173W PF:0.9769 Freq:49.99Hz UTHDi:0.00% ITHDi:0.00% KDisp:0 Lamp Flux:4906.61x1 lm		
NAME: 62001000501.42W.4K	TYPE: 62001000501.42W.4K	WEIGHT:
SPEC.: 62001000501.42W.4K	DIM.: 1438*65*42mm	SERIAL No.:
MFR.:	SUR.: 1432*57mm	Shielding Angle:



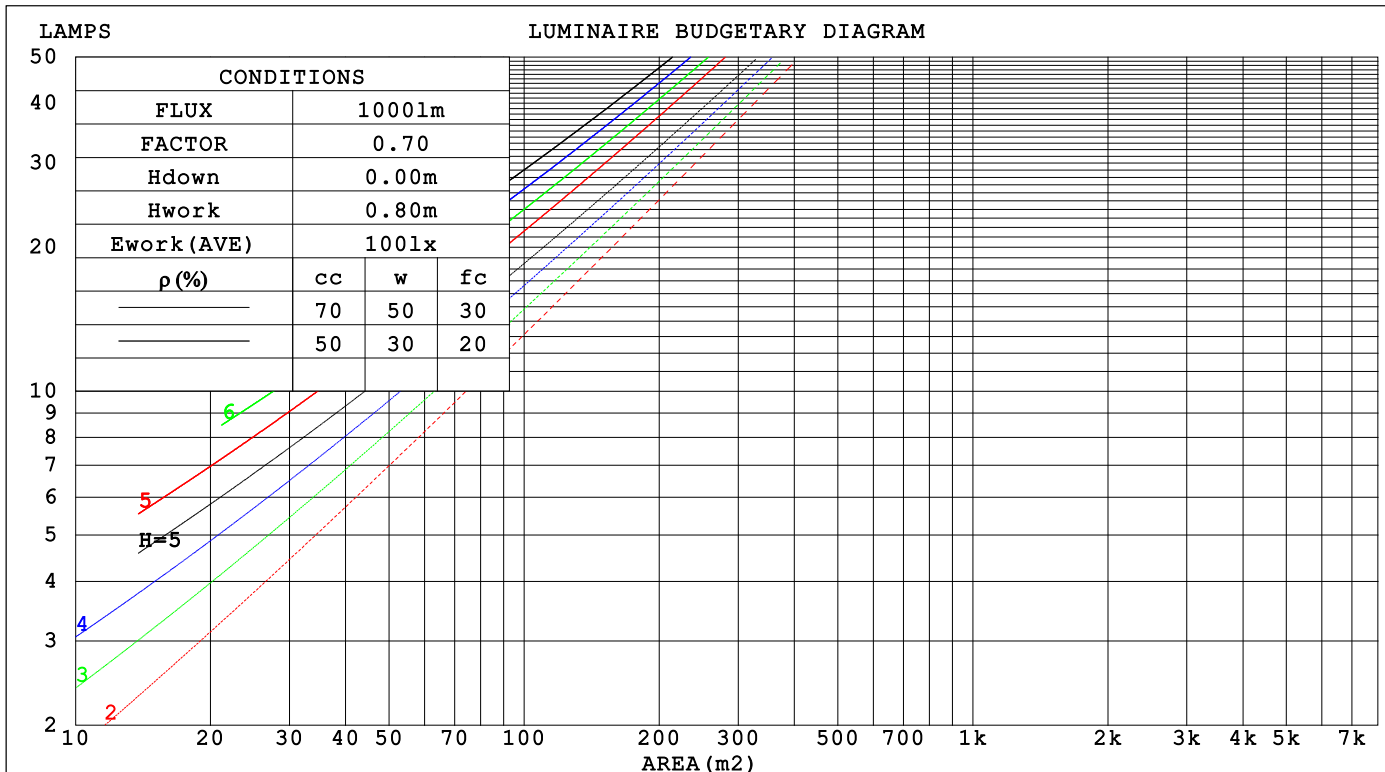
C Range: 0 - 360DEG
C Interval: 30.0DEG
Test Speed: HIGH
Temperature: 25.3°C
Operators:
Test Date: 2026-04-21

γ Range: 0 - 180DEG
γ Interval: 1.0DEG
Test System: EVERFINE GO-3000H_V1 SYSTEM V2.00.471
Humidity: 65.0%
Test Distance: 12.177m [K=1.0000]
Remarks:

CU AND LUMINAIRE BUDGETARY ESTIMATE DIAGRAM

Test:U:231.09V I:0.1868A P:42.173W PF:0.9769 Freq:49.99Hz			UTHDi:0.00% ITHDi:0.00% KDisp:0			Lamp Flux:4906.61x1 lm		
NAME: 62001000501.42W.4K			TYPE: 62001000501.42W.4K			WEIGHT:		
SPEC.: 62001000501.42W.4K			DIM.: 1438*65*42mm			SERIAL No.:		
MFR.:			SUR.: 1432*57mm			Shielding Angle:		

pcc	80%			70%			50%			30%			10%			0
pw	50%	30%	10%	50%	30%	10%	50%	30%	10%	50%	30%	10%	50%	30%	10%	0
pfc	20%			20%			20%			20%			20%			0
RCR	RCR:Room Cavity Ratio															



C Range: 0 - 360DEG
C Interval: 30.0DEG
Test Speed: HIGH
Temperature:25.3℃
Operators:
Test Date:2026-04-21

γ Range: 0 - 180DEG
γ Interval: 1.0DEG
Test System:EVERFINE GO-3000H_V1 SYSTEM V2.00.471
Humidity:65.0%
Test Distance:12.177m [K=1.0000]
Remarks:

WEC AND CCEC

Test:U:231.09V I:0.1868A P:42.173W PF:0.9769 Freq:49.99Hz			UTHDi:0.00% ITHDi:0.00% KDisp:0			Lamp Flux:4906.61x1 lm		
NAME: 62001000501.42W.4K			TYPE: 62001000501.42W.4K			WEIGHT:		
SPEC.: 62001000501.42W.4K			DIM.: 1438*65*42mm			SERIAL No.:		
MFR.:			SUR.: 1432*57mm			Shielding Angle:		

pcc	80%			70%			50%			30%			10%			0														
pw	50%	30%	10%	50%	30%	10%	50%	30%	10%	50%	30%	10%	50%	30%	10%	0														
pfc	20%			20%			20%			20%			20%			0														
RCR	RCR:Room Cavity Ratio															Wall Exitance Coefficients(WEC)														
0.0																														
1.0	.243	.138	.044	.236	.135	.043	.223	.128	.041	.211	.122	.039	.199	.116	.037															
2.0	.233	.128	.039	.227	.125	.039	.216	.120	.037	.205	.115	.036	.195	.111	.035															
3.0	.220	.117	.035	.215	.115	.035	.205	.111	.034	.196	.107	.033	.187	.103	.032															
4.0	.207	.107	.032	.202	.106	.031	.193	.102	.031	.185	.099	.030	.177	.096	.029															
5.0	.194	.099	.029	.190	.098	.028	.182	.095	.028	.175	.092	.027	.168	.090	.027															
6.0	.183	.092	.026	.179	.090	.026	.172	.088	.026	.165	.086	.025	.159	.084	.025															
7.0	.172	.085	.024	.169	.084	.024	.163	.082	.024	.157	.080	.023	.151	.079	.023															
8.0	.162	.079	.022	.159	.079	.022	.154	.077	.022	.149	.075	.022	.144	.074	.021															
9.0	.154	.074	.021	.151	.074	.021	.146	.072	.020	.141	.071	.020	.137	.069	.020															
10.0	.146	.070	.019	.143	.069	.019	.139	.068	.019	.134	.067	.019	.130	.066	.019															

pcc	80%			70%			50%			30%			10%			0
pw	50%	30%	10%	50%	30%	10%	50%	30%	10%	50%	30%	10%	50%	30%	10%	0
pfc	20%			20%			20%			20%			20%			0
RCR	RCR:Room Cavity Ratio						Ceiling Cavity Exitance Coefficients(CCEC)									
0.0	.195	.195	.195	.167	.167	.167	.114	.114	.114	.065	.065	.065	.021	.021	.021	
1.0	.180	.161	.144	.154	.138	.124	.105	.095	.086	.061	.055	.050	.019	.018	.016	
2.0	.169	.137	.110	.145	.118	.095	.099	.081	.066	.057	.047	.039	.018	.015	.013	
3.0	.159	.119	.086	.137	.102	.075	.094	.071	.052	.054	.041	.031	.017	.013	.010	
4.0	.151	.105	.069	.130	.090	.060	.089	.063	.042	.052	.037	.025	.017	.012	.008	
5.0	.143	.094	.057	.123	.081	.050	.085	.057	.035	.049	.033	.021	.016	.011	.007	
6.0	.136	.085	.048	.117	.074	.042	.081	.052	.030	.047	.030	.018	.015	.010	.006	
7.0	.130	.078	.042	.112	.068	.036	.077	.047	.026	.045	.028	.015	.014	.009	.005	
8.0	.124	.072	.036	.107	.062	.032	.074	.044	.022	.043	.026	.013	.014	.008	.004	
9.0	.119	.067	.032	.102	.058	.028	.071	.041	.020	.041	.024	.012	.013	.008	.004	
10.0	.113	.063	.029	.098	.055	.025	.068	.038	.018	.040	.023	.011	.013	.007	.004	

C Range: 0 - 360DEG
C Interval: 30.0DEG
Test Speed: HIGH
Temperature:25.3℃
Operators:
Test Date:2026-04-21

γ Range: 0 - 180DEG
γ Interval: 1.0DEG
Test System:EVERFINE GO-3000H_V1 SYSTEM V2.00.471
Humidity:65.0%
Test Distance:12.177m [K=1.0000]
Remarks:

UGR(Unified Glare Rating) Table

Test:U:231.09V I:0.1868A P:42.173W PF:0.9769 Freq:49.99Hz UTHDi:0.00% ITHDi:0.00% KDisp:0 Lamp Flux:4906.61x1 lm										
NAME: 62001000501.42W.4K					TYPE: 62001000501.42W.4K			WEIGHT:		
SPEC.: 62001000501.42W.4K					DIM.: 1438*65*42mm			SERIAL No.:		
MFR.:					SUR.: 1432*57mm			Shielding Angle:		
ceiling/cavity	0.7	0.7	0.5	0.5	0.3	0.7	0.7	0.5	0.5	0.3
walls	0.5	0.3	0.5	0.3	0.3	0.5	0.3	0.5	0.3	0.3
working plane	0.2	0.2	0.2	0.2	0.2	0.2	0.2	0.2	0.2	0.2
Room dimensions	Viewed crosswise					Viewed endwise				
x = 2H y = 2H	20.3	21.6	20.6	21.8	22.0	20.6	21.8	20.8	22.0	22.2
3H	21.1	22.2	21.3	22.5	22.7	21.3	22.4	21.6	22.7	22.9
4H	21.3	22.4	21.6	22.7	22.9	21.5	22.6	21.8	22.9	23.1
6H	21.5	22.5	21.8	22.8	23.1	21.7	22.7	22.0	23.0	23.3
8H	21.5	22.5	21.9	22.8	23.1	21.7	22.7	22.1	23.0	23.3
12H	21.5	22.5	21.9	22.8	23.1	21.7	22.7	22.1	23.0	23.3
4H 2H	20.6	21.7	20.9	21.9	22.2	20.8	21.9	21.1	22.1	22.4
3H	21.5	22.5	21.9	22.8	23.1	21.7	22.6	22.0	22.9	23.2
4H	21.9	22.8	22.3	23.1	23.4	22.1	22.9	22.4	23.3	23.6
6H	22.2	22.9	22.6	23.3	23.7	22.3	23.1	22.7	23.4	23.8
8H	22.2	23.0	22.7	23.3	23.7	22.4	23.1	22.8	23.4	23.8
12H	22.3	22.9	22.7	23.3	23.7	22.4	23.0	22.8	23.4	23.8
8H 4H	22.0	22.7	22.4	23.1	23.5	22.2	22.9	22.6	23.2	23.6
6H	22.4	23.0	22.8	23.4	23.8	22.5	23.1	22.9	23.5	23.9
8H	22.5	23.0	23.0	23.4	23.9	22.6	23.1	23.1	23.5	24.0
12H	22.6	23.0	23.0	23.5	23.9	22.6	23.1	23.1	23.5	24.0
12H 4H	22.0	22.7	22.4	23.0	23.5	22.1	22.8	22.6	23.2	23.6
6H	22.4	22.9	22.9	23.3	23.8	22.5	23.0	23.0	23.4	23.9
8H	22.5	23.0	23.0	23.4	23.9	22.6	23.1	23.1	23.5	24.0
Variations with the observer position at spacings(CIE Pub.117):										
S = 1.0H	+ 0.6 / - 0.7					+ 0.6 / - 0.7				
1.5H	+ 0.4 / - 0.5					+ 0.5 / - 0.5				
2.0H	+ 1.2 / - 0.8					+ 1.3 / - 0.8				

CIE Pub.117, 4907 lm Total Lamp Luminous Flux Corrected (8log(F/F0) = 5.5)
Area: 0.082 m2

C Range: 0 - 360DEG
C Interval: 30.0DEG
Test Speed: HIGH
Temperature:25.3℃
Operators:
Test Date:2026-04-21

γ Range: 0 - 180DEG
γ Interval: 1.0DEG
Test System:EVERFINE GO-3000H_V1 SYSTEM V2.00.471
Humidity:65.0%
Test Distance:12.177m [K=1.0000]
Remarks:

UTILIZATION FACTORS TABLE

Test:U:231.09V I:0.1868A P:42.173W PF:0.9769 Freq:49.99Hz		
UTHDi:0.00% ITHDi:0.00% KDisp:0 Lamp Flux:4906.61x1 lm		
NAME: 62001000501.42W.4K	TYPE: 62001000501.42W.4K	WEIGHT:
SPEC.: 62001000501.42W.4K	DIM.: 1438*65*42mm	SERIAL No.:
MFR.:	SUR.: 1432*57mm	Shielding Angle:

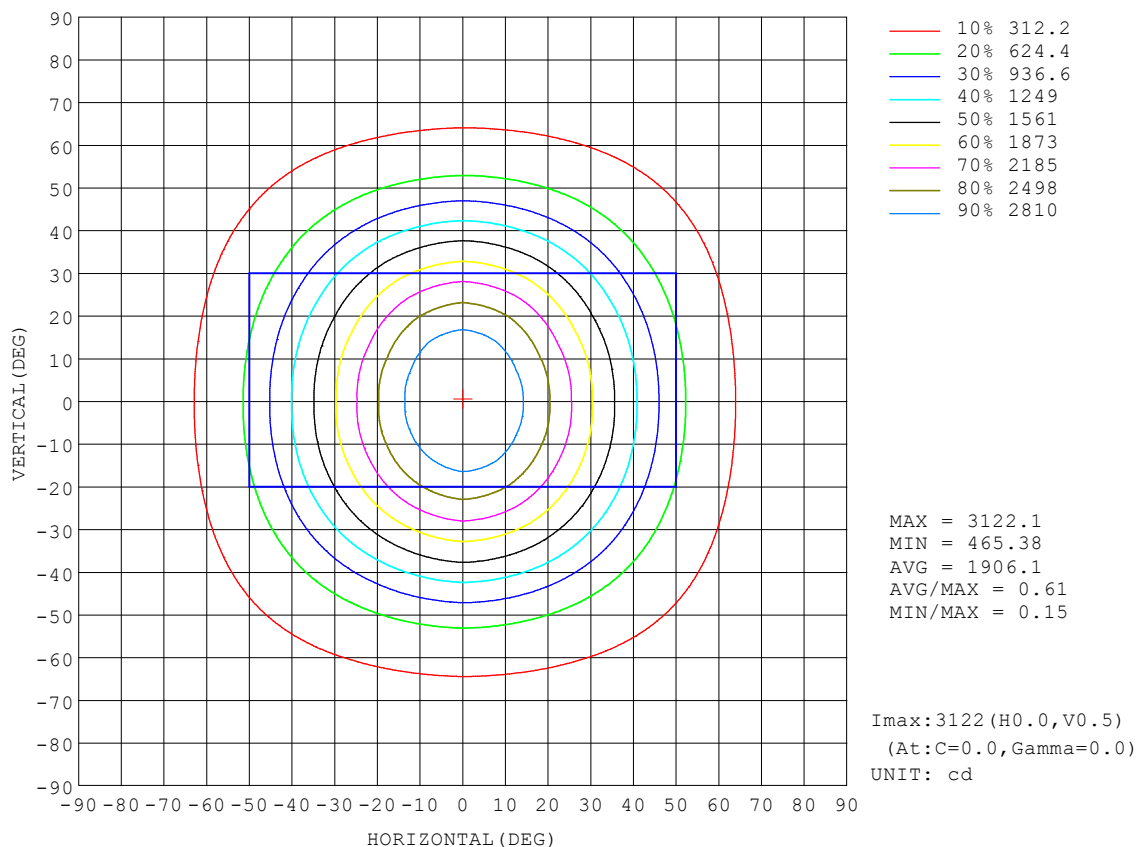
REFLECTANCE										
Ceiling	0.8	0.8	0.8	0.7	0.7	0.7	0.5	0.5	0.5	0
Walls	0.7	0.5	0.3	0.7	0.5	0.3	0.7	0.5	0.3	0
Working plane	0.2	0.2	0.2	0.2	0.2	0.2	0.2	0.2	0.2	0
ROOM INDEX	UTILIZATION FACTORS (PERCENT) $k(RI) \times RCR = 5$									
$k = 0.60$	69	60	54	69	59	54	67	59	54	48
0.80	79	69	64	78	69	63	76	68	63	57
1.00	86	77	71	85	77	71	83	77	71	65
1.25	92	84	78	91	83	78	88	82	77	71
1.50	96	88	83	95	88	83	92	86	82	75
2.00	101	95	90	100	94	89	96	91	87	81
2.50	104	98	94	102	97	93	99	94	91	83
3.00	107	101	97	105	100	96	101	97	94	86
4.00	110	105	102	107	104	100	103	100	98	89
5.00	111	108	105	109	106	103	105	102	100	91
ROOM INDEX	UF (total)									Direct
According to DIN EN 13032-2 2004			Suspended					SHRNOM = 1.25		

C Range: 0 - 360DEG
C Interval: 30.0DEG
Test Speed: HIGH
Temperature: 25.3 °C
Operators:
Test Date: 2026-04-21

γ Range: 0 - 180DEG
γ Interval: 1.0DEG
Test System: EVERFINE GO-3000H_V1 SYSTEM V2.00.471
Humidity: 65.0%
Test Distance: 12.177m [K=1.0000]
Remarks:

ISOCANDELA DIAGRAM

Test:U:231.09V I:0.1868A P:42.173W PF:0.9769 Freq:49.99Hz UTHDi:0.00% ITHDi:0.00% KDisp:0 Lamp Flux:4906.61x1 lm		
NAME: 62001000501.42W.4K	TYPE: 62001000501.42W.4K	WEIGHT:
SPEC.: 62001000501.42W.4K	DIM.: 1438*65*42mm	SERIAL No.:
MFR.:	SUR.: 1432*57mm	Shielding Angle:

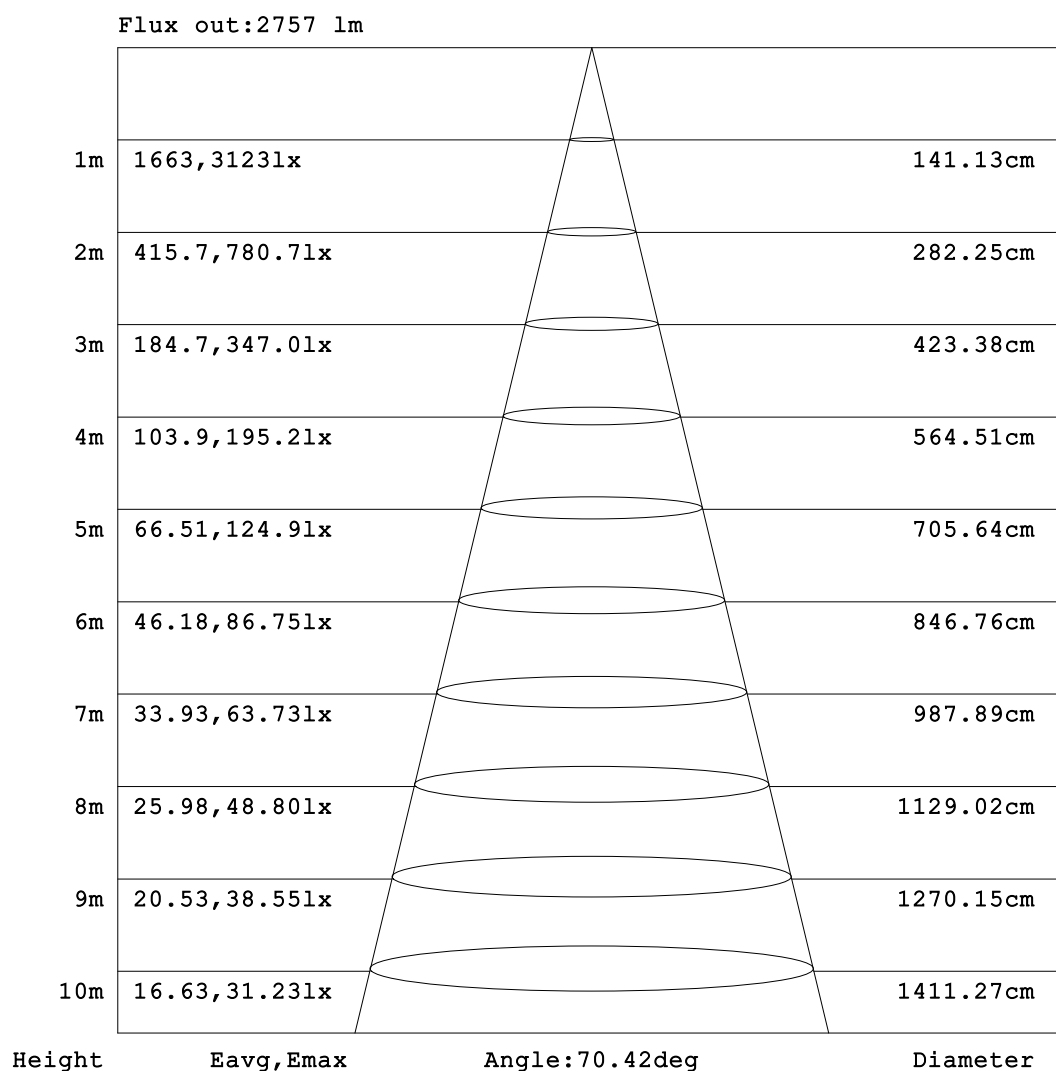


C Range: 0 - 360DEG
C Interval: 30.0DEG
Test Speed: HIGH
Temperature:25.3℃
Operators:
Test Date:2026-04-21

γ Range: 0 - 180DEG
γ Interval: 1.0DEG
Test System:EVERFINE GO-3000H_V1 SYSTEM V2.00.471
Humidity:65.0%
Test Distance:12.177m [K=1.0000]
Remarks:

AAI Figure

Test:U:231.09V I:0.1868A P:42.173W PF:0.9769 Freq:49.99Hz UTHDi:0.00% ITHDi:0.00% KDisp:0 Lamp Flux:4906.61x1 lm		
NAME: 62001000501.42W.4K	TYPE: 62001000501.42W.4K	WEIGHT:
SPEC.: 62001000501.42W.4K	DIM.: 1438*65*42mm	SERIAL No.:
MFR.:	SUR.: 1432*57mm	Shielding Angle:



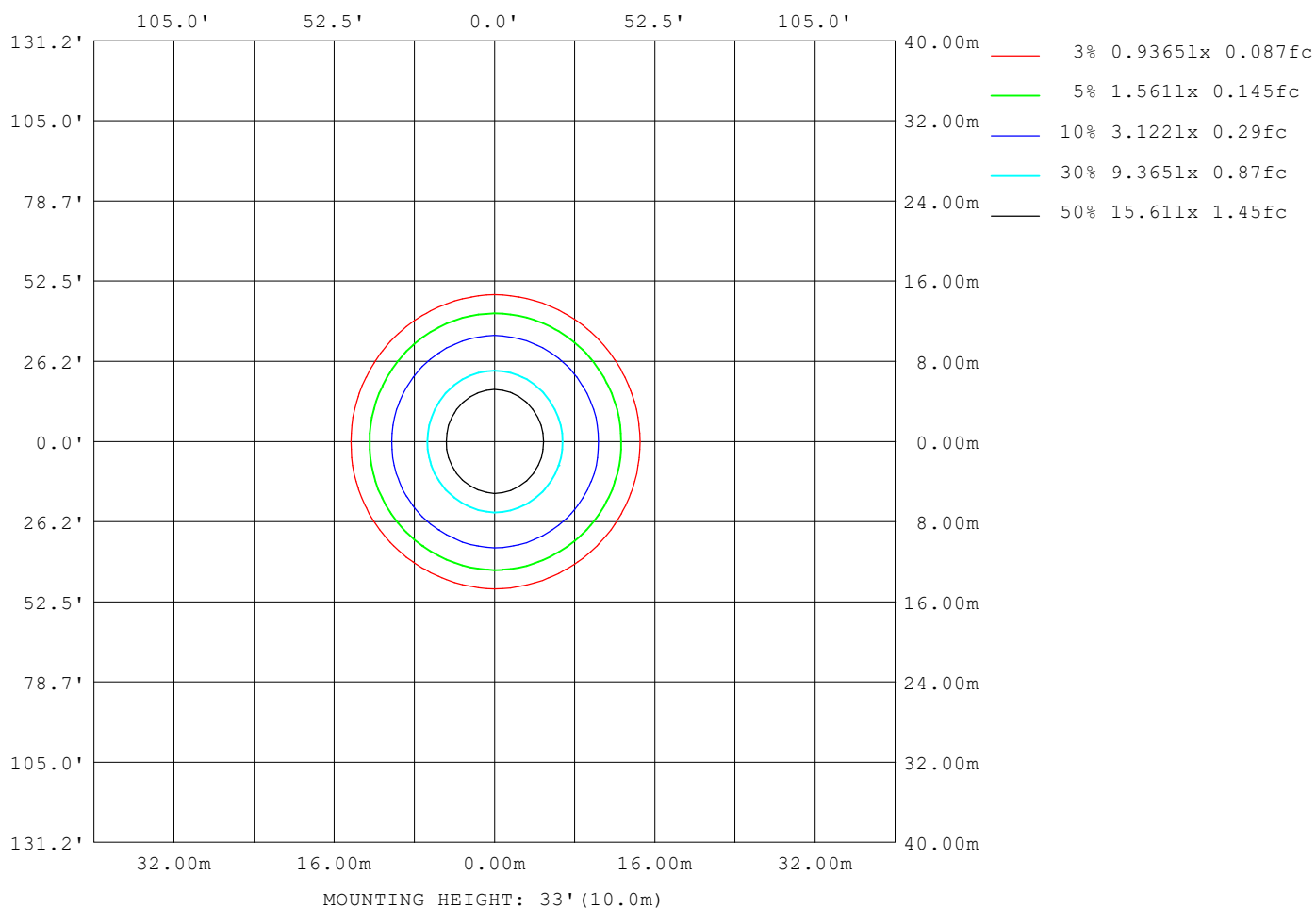
Note:The Curves indicate the illuminated area and the average illumination when the luminaire is at different distance.

C Range: 0 - 360DEG
C Interval: 30.0DEG
Test Speed: HIGH
Temperature:25.3℃
Operators:
Test Date:2026-04-21

γ Range: 0 - 180DEG
γ Interval: 1.0DEG
Test System:EVERFINE GO-3000H_V1 SYSTEM V2.00.471
Humidity:65.0%
Test Distance:12.177m [K=1.0000]
Remarks:

ISOLUX DIAGRAM

Test:U:231.09V I:0.1868A P:42.173W PF:0.9769 Freq:49.99Hz UTHDi:0.00% ITHDi:0.00% KDisp:0 Lamp Flux:4906.61x1 lm		
NAME: 62001000501.42W.4K	TYPE: 62001000501.42W.4K	WEIGHT:
SPEC.: 62001000501.42W.4K	DIM.: 1438*65*42mm	SERIAL No.:
MFR.:	SUR.: 1432*57mm	Shielding Angle:



C Range: 0 - 360DEG
C Interval: 30.0DEG
Test Speed: HIGH
Temperature:25.3℃
Operators:
Test Date:2026-04-21

γ Range: 0 - 180DEG
γ Interval: 1.0DEG
Test System:EVERFINE GO-3000H_V1 SYSTEM V2.00.471
Humidity:65.0%
Test Distance:12.177m [K=1.0000]
Remarks:

LED Avg.L Report

Test:U:231.09V I:0.1868A P:42.173W PF:0.9769 Freq:49.99Hz UTHDi:0.00% ITHDi:0.00% KDisp:0 Lamp Flux:4906.61x1 lm		
NAME: 62001000501.42W.4K	TYPE: 62001000501.42W.4K	WEIGHT:
SPEC.: 62001000501.42W.4K	DIM.: 1438*65*42mm	SERIAL No.:
MFR.:	SUR.: 1432*57mm	Shielding Angle:

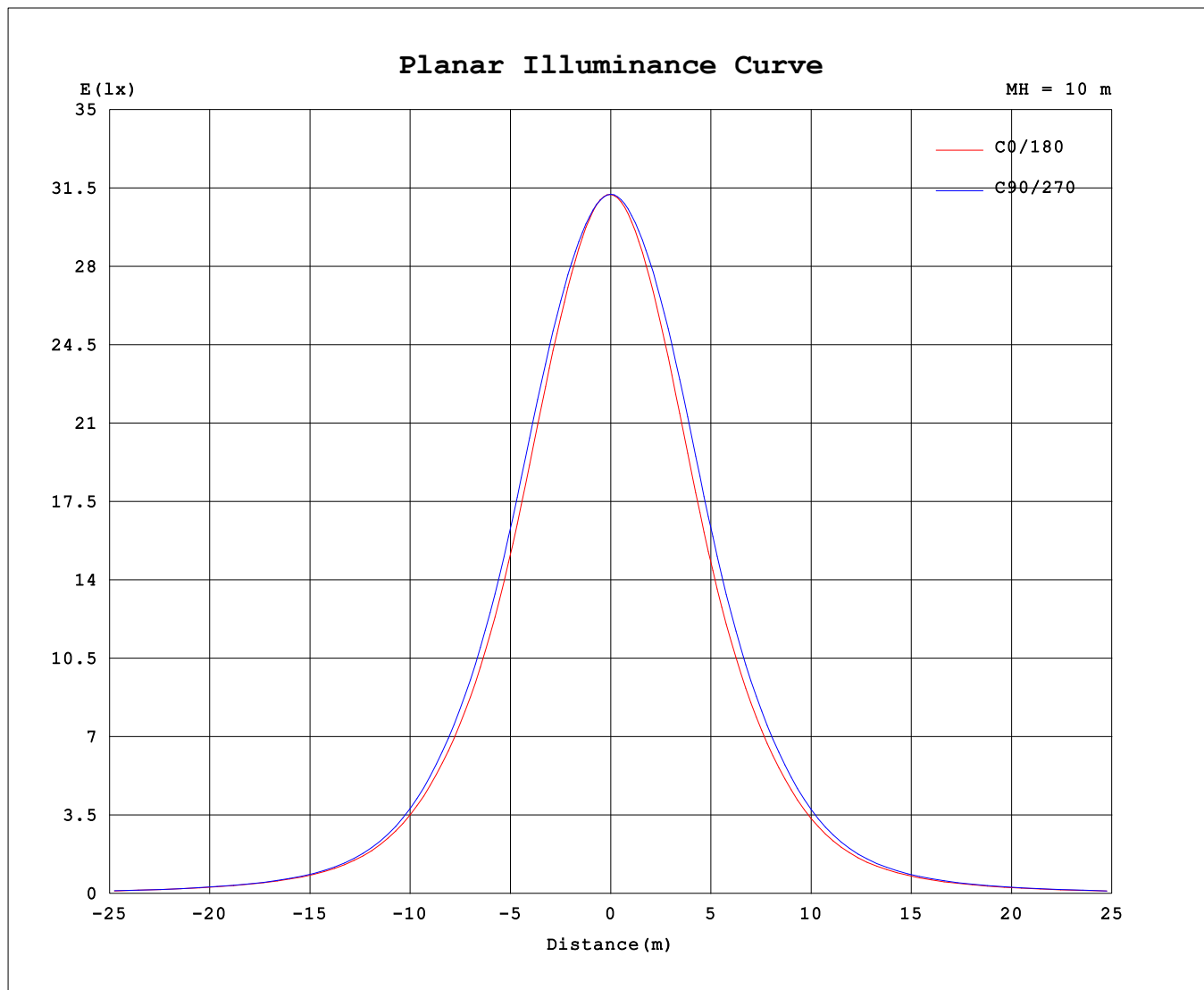
AvgL	cd/m2
L_0~180 (65) av	8178
L_0~180 (75) av	6135
L_0~180 (85) av	3483
L_90~270 (65) av	8597
L_90~270 (75) av	6476
L_90~270 (85) av	3299
L_45 (65) av	8298
L_45 (75) av	6203
L_45 (85) av	3474

Standard: GB/T 29293-2012

C Range: 0 - 360DEG
C Interval: 30.0DEG
Test Speed: HIGH
Temperature:25.3℃
Operators:
Test Date:2026-04-21

γ Range: 0 - 180DEG
γ Interval: 1.0DEG
Test System:EVERFINE GO-3000H_V1 SYSTEM V2.00.471
Humidity:65.0%
Test Distance:12.177m [K=1.0000]
Remarks:

Planar Illuminance Curve



C Range: 0 - 360DEG
C Interval: 30.0DEG
Test Speed: HIGH
Temperature: 25.3 °C
Operators:
Test Date: 2026-04-21

γ Range: 0 - 180DEG
 γ Interval: 1.0DEG
Test System: EVERFINE GO-3000H_V1 SYSTEM V2.00.471
Humidity: 65.0%
Test Distance: 12.177m [K=1.0000]
Remarks:

LUMINOUS DISTRIBUTION INTENSITY DATA

Test:U:231.09V I:0.1868A P:42.173W PF:0.9769 Freq:49.99Hz		
UTHDi:0.00% ITHDi:0.00% KDisp:0 Lamp Flux:4906.61x1 lm		
NAME: 62001000501.42W.4K	TYPE: 62001000501.42W.4K	WEIGHT:
SPEC.: 62001000501.42W.4K	DIM.: 1438*65*42mm	SERIAL No.:
MFR.:	SUR.: 1432*57mm	Shielding Angle:

Table--1

UNIT: cd

C (DEG) γ (DEG)	0	30	60	90	120	150	180	210	240	270	300	330						
0	3122	3122	3122	3122	3122	3122	3122	3122	3122	3122	3122	3122						
5	3083	3085	3086	3087	3080	3076	3069	3074	3085	3090	3089	3082						
10	2960	2971	2991	2999	2979	2958	2939	2954	2990	3007	2995	2967						
15	2775	2800	2845	2863	2823	2775	2745	2774	2844	2874	2846	2789						
20	2521	2559	2625	2657	2601	2527	2478	2519	2616	2668	2629	2544						
25	2216	2262	2338	2377	2308	2220	2168	2213	2321	2381	2339	2242						
30	1900	1945	2020	2058	1985	1901	1851	1893	1997	2056	2011	1920						
35	1597	1637	1701	1736	1666	1595	1550	1586	1676	1729	1687	1613						
40	1299	1334	1381	1413	1349	1294	1252	1281	1354	1404	1369	1312						
45	994	1020	1048	1074	1018	983	948	968	1020	1062	1034	1000						
50	726	741	758	775	736	713	689	696	734	763	748	728						
55	526	533	541	552	528	515	498	502	523	543	535	525						
60	392	396	400	406	390	382	371	373	385	397	391	389						
65	293	296	296	302	290	283	274	275	282	294	290	290						
70	211	214	213	217	205	202	194	195	199	209	206	208						
75	137	140	138	141	131	130	123	124	126	134	133	135						
80	73.8	75.5	73.1	74.0	67.7	67.9	63.1	63.5	64.6	69.2	70.4	71.9						
85	27.7	28.6	26.3	24.7	23.3	24.3	22.1	22.0	22.0	22.4	25.1	26.4						
90	1.32	2.43	2.40	2.08	2.09	1.46	1.09	1.79	2.15	1.27	2.17	1.80						
95	1.00	1.24	1.17	0.97	1.14	1.24	1.26	1.38	1.35	1.10	1.42	1.34						
100	1.00	1.26	1.20	1.31	1.25	1.37	1.51	1.43	1.63	1.46	1.50	1.37						
105	1.29	1.51	1.50	1.75	1.66	1.69	1.88	1.81	2.05	1.92	1.87	1.60						
110	1.67	1.89	1.99	2.31	2.16	2.12	2.33	2.30	2.63	2.50	2.40	2.01						
115	2.16	2.39	2.58	2.95	2.77	2.66	2.92	2.93	3.31	3.21	3.05	2.63						
120	2.79	3.05	3.30	3.68	3.50	3.32	3.62	3.69	4.08	3.97	3.80	3.37						
125	3.53	3.84	4.07	4.49	4.29	4.10	4.42	4.51	4.91	4.85	4.65	4.16						
130	4.37	4.68	4.95	5.39	5.19	4.94	5.33	5.45	5.84	5.79	5.57	5.10						
135	5.31	5.62	5.90	6.33	6.14	5.92	6.33	6.45	6.80	6.74	6.53	6.08						
140	6.32	6.61	6.86	7.28	7.12	6.92	7.33	7.45	7.80	7.71	7.52	7.08						
145	7.34	7.64	7.84	8.25	8.10	7.96	8.38	8.48	8.78	8.68	8.49	8.13						
150	8.40	8.68	8.82	9.19	9.08	9.00	9.41	9.46	9.77	9.62	9.47	9.15						
155	9.47	9.70	9.76	10.1	10.0	9.97	10.4	10.4	10.7	10.5	10.4	10.1						
160	10.5	10.6	10.7	11.0	10.9	10.9	11.4	11.3	11.5	11.4	11.3	11.1						
165	11.5	11.6	11.5	11.8	11.8	11.8	12.3	12.1	12.3	12.1	12.1	12.0						
170	12.4	12.4	12.2	12.5	12.4	12.6	13.1	12.7	12.8	12.6	12.7	12.6						
175	13.0	12.9	12.7	12.9	12.9	12.9	13.3	13.1	13.0	12.9	12.9	13.0						
180	13.1	13.0	12.9	12.9	13.0	13.0	13.2	13.0	13.0	13.0	13.0	13.0						

C Range: 0 - 360DEG
C Interval: 30.0DEG
Test Speed: HIGH
Temperature:25.3℃
Operators:
Test Date:2026-04-21

γ Range: 0 - 180DEG
γ Interval: 1.0DEG
Test System:EVERFINE GO-3000H_V1 SYSTEM V2.00.471
Humidity:65.0%
Test Distance:12.177m [K=1.0000]
Remarks: