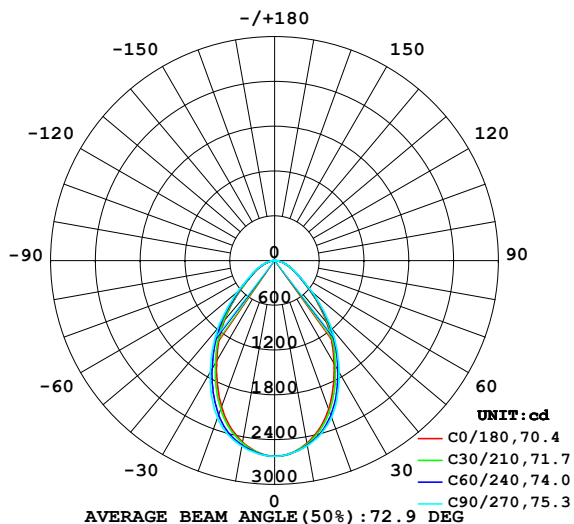


## LUMINAIRE PHOTOMETRIC TEST REPORT

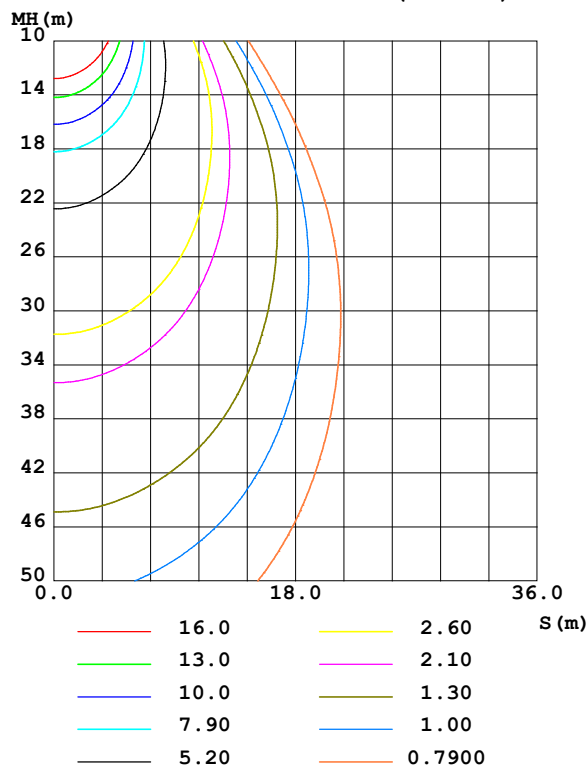
Test:U:231.09V I:0.1561A P:34.929W PF:0.9682 Freq:49.99Hz UTHDi:0.00% ITHDi:0.00% KDisp:0 Lamp Flux:4122.63x1 lm		
NAME: 62001000501.35W.4K	TYPE: 62001000501.35W.4K	WEIGHT:
SPEC.: 62001000501.35W.4K	DIM.: 1438*65*42mm	SERIAL No.:
MFR.:	SUR.: 1432*57mm	Shielding Angle:

DATA OF LAMP		PHOTOMETRIC DATA Eff: 118.03 lm/W			
MODEL	62001000501.35W.4K	I <sub>max</sub> (cd)	2623	S/MH(C0/180)	0.96
NOMINAL POWER(W)		LOR(%)	100.0	S/MH(C90/270)	1.04
RATED VOLTAGE(V)	230	TOTAL FLUX(lm)	4122.6	η UP,DN(C0-180)	0.3,50.0
NOMINAL FLUX(lm)	4122.63	CIE CLASS	DIRECT	η UP,DN(C180-360)	0.3,49.4
LAMPS INSIDE	1	η up (%)	0.6	CIBSE SHR NOM	1.00
TEST VOLTAGE(V)	230	η down (%)	99.4	CIBSE SHR MAX	1.10

LUMINOUS INTENSITY DISTRIBUTION DIAGRAM



C0 PLANE ISOLUX DIAGRAM (UNIT:lx)



C Range: 0 - 360DEG  
C Interval: 30.0DEG  
Test Speed: HIGH  
Temperature:25.3℃  
Operators:  
Test Date:2026-04-21

γ Range: 0 - 180DEG  
γ Interval: 1.0DEG  
Test System:EVERFINE GO-3000H\_V1 SYSTEM V2.00.471  
Humidity:65.0%  
Test Distance:12.177m [K=1.0000]  
Remarks:

## ZONAL FLUX DIAGRAM

### ZONAL FLUX DIAGRAM:

γ	C0	C45	C90	C135	C180	C225	C270	C315	γ	Φ zone	Φ total	%lum, lamp
10	2486	2505	2520	2494	2470	2496	2527	2504	0- 10	244.3	244.3	5.93,5.93
20	2118	2178	2232	2154	2082	2157	2241	2173	10- 20	661.9	906.1	22,22
30	1596	1666	1728	1632	1555	1634	1727	1651	20- 30	878.4	1785	43.3,43.3
40	1092	1141	1187	1110	1053	1107	1180	1126	30- 40	863.0	2648	64.2,64.2
50	610.3	630.1	651.2	608.8	577.1	600.3	641.5	620.1	40- 50	659.7	3307	80.2,80.2
60	329.8	334.6	340.7	324.1	311.9	318.2	333.9	327.9	50- 60	403.1	3710	90,90
70	177.0	179.1	182.0	170.8	162.9	165.3	175.5	173.8	60- 70	242.5	3953	95.9,95.9
80	62.02	62.46	62.05	56.97	53.04	53.80	58.22	59.76	70- 80	118.9	4072	98.8,98.8
90	6.549	2.052	1.658	1.483	0.9343	1.641	1.066	1.646	80- 90	26.32	4098	99.4,99.4
100	0.8313	1.050	1.115	1.103	1.288	1.286	1.194	1.201	90-100	1.372	4099	99.4,99.4
110	1.379	1.628	1.946	1.803	1.971	2.066	2.092	1.849	100-110	1.533	4101	99.5,99.5
120	2.334	2.657	3.106	2.855	3.054	3.266	3.355	3.009	110-120	2.336	4103	99.5,99.5
130	3.679	4.046	4.539	4.249	4.480	4.730	4.833	4.464	120-130	3.259	4107	99.6,99.6
140	5.274	5.646	6.131	5.891	6.166	6.396	6.447	6.119	130-140	3.997	4111	99.7,99.7
150	7.030	7.335	7.724	7.571	7.908	8.064	8.073	7.820	140-150	4.283	4115	99.8,99.8
160	8.797	8.953	9.235	9.179	9.584	9.595	9.540	9.424	150-160	3.912	4119	99.9,99.9
170	10.40	10.32	10.48	10.49	10.97	10.72	10.60	10.65	160-170	2.806	4122	100,100
180	11.01	10.86	10.84	10.87	11.12	10.93	10.86	10.90	170-180	1.028	4123	100,100
DEG	LUMINOUS INTENSITY:cd									UNIT:lm		

Conical surface Flux(90deg): 3012.5 lm

%lum = 73.1%

%lamp = 73.1%

Conical surface Flux(130deg): 3848.2 lm

%lum = 93.3%

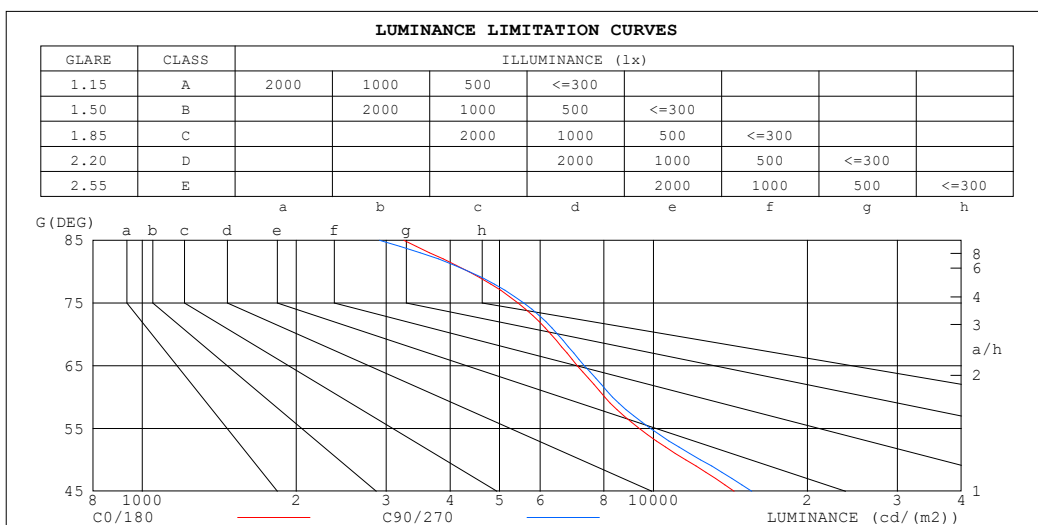
%lamp = 93.3%

C Range: 0 - 360DEG  
C Interval: 30.0DEG  
Test Speed: HIGH  
Temperature:25.3℃  
Operators:  
Test Date:2026-04-21

γ Range: 0 - 180DEG  
γ Interval: 1.0DEG  
Test System:EVERFINE GO-3000H\_V1 SYSTEM V2.00.471  
Humidity:65.0%  
Test Distance:12.177m [K=1.0000]  
Remarks:

## LUMINANCE LIMITATION CURVES

Test:U:231.09V I:0.1561A P:34.929W PF:0.9682 Freq:49.99Hz UTHDi:0.00% ITHDi:0.00% KDisp:0 Lamp Flux:4122.63x1 lm		
NAME: 62001000501.35W.4K	TYPE: 62001000501.35W.4K	WEIGHT:
SPEC.: 62001000501.35W.4K	DIM.: 1438*65*42mm	SERIAL No.:
MFR.:	SUR.: 1432*57mm	Shielding Angle:



LUMINANCE cd/(m2)		
G (DEG)	C0/180	C90/270
85	3248	2910
80	4350	4360
75	5432	5577
70	6303	6495
65	7099	7325
60	8033	8315
55	9379	9866
50	11563	12363
45	14374	15571

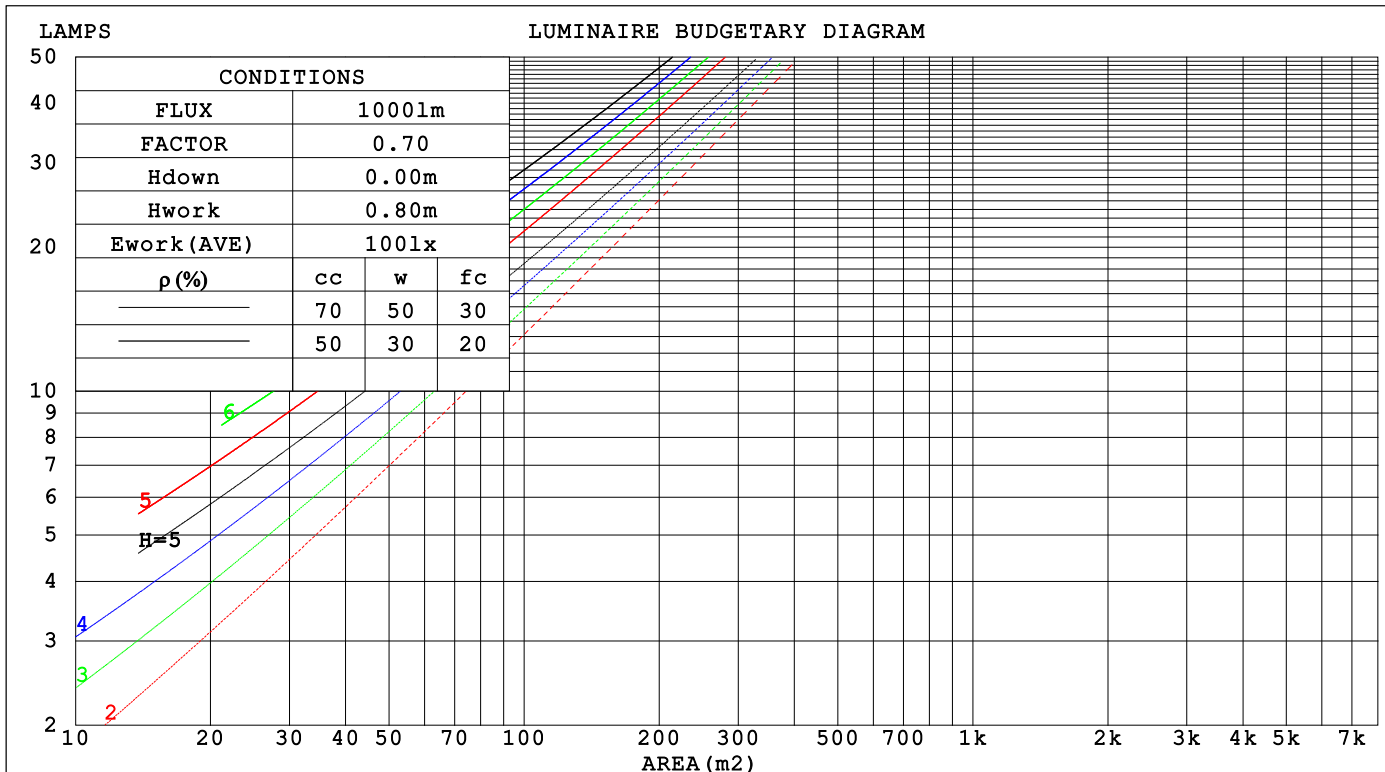
C Range: 0 - 360DEG  
C Interval: 30.0DEG  
Test Speed: HIGH  
Temperature:25.3℃  
Operators:  
Test Date:2026-04-21

γ Range: 0 - 180DEG  
γ Interval: 1.0DEG  
Test System:EVERFINE GO-3000H\_V1 SYSTEM V2.00.471  
Humidity:65.0%  
Test Distance:12.177m [K=1.0000]  
Remarks:

## CU AND LUMINAIRE BUDGETARY ESTIMATE DIAGRAM

Test:U:231.09V I:0.1561A P:34.929W PF:0.9682 Freq:49.99Hz		
UTHDi:0.00% ITHDi:0.00% KDisp:0 Lamp Flux:4122.63x1 lm		
NAME: 62001000501.35W.4K	TYPE: 62001000501.35W.4K	WEIGHT:
SPEC.: 62001000501.35W.4K	DIM.: 1438*65*42mm	SERIAL No.:
MFR.:	SUR.: 1432*57mm	Shielding Angle:

pcc	80%			70%			50%			30%			10%			0
pw	50%	30%	10%	50%	30%	10%	50%	30%	10%	50%	30%	10%	50%	30%	10%	0
pfc	20%			20%			20%			20%			20%			0
RCR	RCR:Room Cavity Ratio															



C Range: 0 - 360DEG  
C Interval: 30.0DEG  
Test Speed: HIGH  
Temperature:25.3℃  
Operators:  
Test Date:2026-04-21

γ Range: 0 - 180DEG  
γ Interval: 1.0DEG  
Test System:EVERFINE GO-3000H\_V1 SYSTEM V2.00.471  
Humidity:65.0%  
Test Distance:12.177m [K=1.0000]  
Remarks:

## WEC AND CCEC

Test:U:231.09V I:0.1561A P:34.929W PF:0.9682 Freq:49.99Hz		
UTHDi:0.00% ITHDi:0.00% KDisp:0 Lamp Flux:4122.63x1 lm		
NAME: 62001000501.35W.4K	TYPE: 62001000501.35W.4K	WEIGHT:
SPEC.: 62001000501.35W.4K	DIM.: 1438*65*42mm	SERIAL No.:
MFR.:	SUR.: 1432*57mm	Shielding Angle:

pcc	80%			70%			50%			30%			10%			0	
pw	50%	30%	10%	50%	30%	10%	50%	30%	10%	50%	30%	10%	50%	30%	10%	0	
pfc	20%			20%			20%			20%			20%			0	
RCR	RCR:Room Cavity Ratio						Wall Exitance Coefficients(WEC)										
0.0																	
1.0	.243	.138	.044	.236	.135	.043	.223	.128	.041	.211	.122	.039	.199	.116	.037		
2.0	.233	.128	.039	.227	.125	.039	.216	.120	.037	.205	.115	.036	.195	.111	.035		
3.0	.220	.117	.035	.215	.115	.035	.205	.111	.034	.196	.107	.033	.187	.103	.032		
4.0	.207	.107	.032	.202	.106	.031	.193	.102	.031	.185	.099	.030	.177	.096	.029		
5.0	.194	.099	.029	.190	.098	.028	.182	.095	.028	.175	.092	.027	.168	.090	.027		
6.0	.183	.092	.026	.179	.090	.026	.172	.088	.026	.165	.086	.025	.159	.084	.025		
7.0	.172	.085	.024	.169	.084	.024	.163	.082	.024	.157	.080	.023	.151	.079	.023		
8.0	.162	.079	.022	.159	.079	.022	.154	.077	.022	.149	.075	.022	.144	.074	.021		
9.0	.154	.074	.021	.151	.074	.021	.146	.072	.020	.141	.071	.020	.137	.069	.020		
10.0	.146	.070	.019	.143	.069	.019	.139	.068	.019	.134	.067	.019	.130	.066	.019		

pcc	80%			70%			50%			30%			10%			0	
pw	50%	30%	10%	50%	30%	10%	50%	30%	10%	50%	30%	10%	50%	30%	10%	0	
pfc	20%			20%			20%			20%			20%			0	
RCR	RCR:Room Cavity Ratio						Ceiling Cavity Exitance Coefficients (CCEC)										
0.0	.195	.195	.195	.167	.167	.167	.114	.114	.114	.065	.065	.065	.021	.021	.021		
1.0	.180	.161	.144	.154	.138	.124	.106	.095	.086	.061	.055	.050	.019	.018	.016		
2.0	.169	.137	.110	.145	.118	.095	.099	.081	.066	.057	.047	.039	.018	.015	.013		
3.0	.160	.119	.086	.137	.102	.075	.094	.071	.052	.054	.042	.031	.017	.013	.010		
4.0	.151	.105	.069	.130	.090	.060	.089	.063	.042	.052	.037	.025	.017	.012	.008		
5.0	.143	.094	.057	.123	.081	.050	.085	.057	.035	.049	.033	.021	.016	.011	.007		
6.0	.136	.085	.048	.117	.074	.042	.081	.052	.030	.047	.030	.018	.015	.010	.006		
7.0	.130	.078	.042	.112	.068	.036	.077	.047	.026	.045	.028	.015	.015	.009	.005		
8.0	.124	.072	.036	.107	.063	.032	.074	.044	.022	.043	.026	.013	.014	.008	.004		
9.0	.119	.067	.032	.102	.058	.028	.071	.041	.020	.041	.024	.012	.013	.008	.004		
10.0	.113	.063	.029	.098	.055	.025	.068	.038	.018	.040	.023	.011	.013	.007	.004		

C Range: 0 - 360DEG  
C Interval: 30.0DEG  
Test Speed: HIGH  
Temperature:25.3℃  
Operators:  
Test Date:2026-04-21

γ Range: 0 - 180DEG  
γ Interval: 1.0DEG  
Test System:EVERFINE GO-3000H\_V1 SYSTEM V2.00.471  
Humidity:65.0%  
Test Distance:12.177m [K=1.0000]  
Remarks:

### UGR(Unified Glare Rating) Table

Test:U:231.09V I:0.1561A P:34.929W PF:0.9682 Freq:49.99Hz UTHDi:0.00% ITHDi:0.00% KDisp:0 Lamp Flux:4122.63x1 lm										
NAME: 62001000501.35W.4K					TYPE: 62001000501.35W.4K			WEIGHT:		
SPEC.: 62001000501.35W.4K					DIM.: 1438*65*42mm			SERIAL No.:		
MFR.:					SUR.: 1432*57mm			Shielding Angle:		
ceiling/cavity	0.7	0.7	0.5	0.5	0.3	0.7	0.7	0.5	0.5	0.3
walls	0.5	0.3	0.5	0.3	0.3	0.5	0.3	0.5	0.3	0.3
working plane	0.2	0.2	0.2	0.2	0.2	0.2	0.2	0.2	0.2	0.2
Room dimensions	Viewed crosswise					Viewed endwise				
x = 2H y = 2H	19.7	21.0	20.0	21.2	21.4	20.0	21.2	20.2	21.4	21.6
3H	20.4	21.6	20.7	21.8	22.1	20.7	21.8	21.0	22.1	22.3
4H	20.7	21.8	21.0	22.1	22.3	20.9	22.0	21.2	22.3	22.5
6H	20.9	21.9	21.2	22.2	22.5	21.1	22.1	21.4	22.4	22.7
8H	20.9	21.9	21.3	22.2	22.5	21.1	22.1	21.4	22.4	22.7
12H	20.9	21.9	21.3	22.2	22.5	21.1	22.1	21.4	22.4	22.7
4H 2H	20.0	21.1	20.3	21.3	21.6	20.2	21.3	20.5	21.5	21.8
3H	20.9	21.9	21.3	22.2	22.5	21.1	22.0	21.4	22.3	22.6
4H	21.3	22.2	21.7	22.5	22.8	21.5	22.3	21.8	22.7	23.0
6H	21.6	22.3	22.0	22.7	23.1	21.7	22.5	22.1	22.8	23.2
8H	21.6	22.3	22.0	22.7	23.1	21.8	22.5	22.2	22.8	23.2
12H	21.7	22.3	22.1	22.7	23.1	21.8	22.4	22.2	22.8	23.2
8H 4H	21.4	22.1	21.8	22.5	22.9	21.6	22.3	22.0	22.6	23.0
6H	21.8	22.4	22.2	22.8	23.2	21.9	22.5	22.3	22.9	23.3
8H	21.9	22.4	22.3	22.8	23.3	22.0	22.5	22.5	22.9	23.4
12H	22.0	22.4	22.4	22.8	23.3	22.0	22.5	22.5	22.9	23.4
12H 4H	21.4	22.0	21.8	22.4	22.8	21.5	22.2	22.0	22.6	23.0
6H	21.8	22.3	22.2	22.7	23.2	21.9	22.4	22.4	22.8	23.3
8H	21.9	22.4	22.4	22.8	23.3	22.0	22.5	22.5	22.9	23.4
Variations with the observer position at spacings(CIE Pub.117):										
S = 1.0H	+ 0.6 / - 0.7					+ 0.6 / - 0.7				
1.5H	+ 0.4 / - 0.5					+ 0.5 / - 0.5				
2.0H	+ 1.2 / - 0.8					+ 1.3 / - 0.8				

CIE Pub.117, 4123 lm Total Lamp Luminous Flux Corrected (8log(F/F0) = 4.9)  
Area: 0.082 m2

C Range: 0 - 360DEG  
C Interval: 30.0DEG  
Test Speed: HIGH  
Temperature:25.3℃  
Operators:  
Test Date:2026-04-21

γ Range: 0 - 180DEG  
γ Interval: 1.0DEG  
Test System:EVERFINE GO-3000H\_V1 SYSTEM V2.00.471  
Humidity:65.0%  
Test Distance:12.177m [K=1.0000]  
Remarks:

### UTILIZATION FACTORS TABLE

Test:U:231.09V I:0.1561A P:34.929W PF:0.9682 Freq:49.99Hz UTHDi:0.00% ITHDi:0.00% KDisp:0 Lamp Flux:4122.63x1 lm		
NAME: 62001000501.35W.4K	TYPE: 62001000501.35W.4K	WEIGHT:
SPEC.: 62001000501.35W.4K	DIM.: 1438*65*42mm	SERIAL No.:
MFR.:	SUR.: 1432*57mm	Shielding Angle:

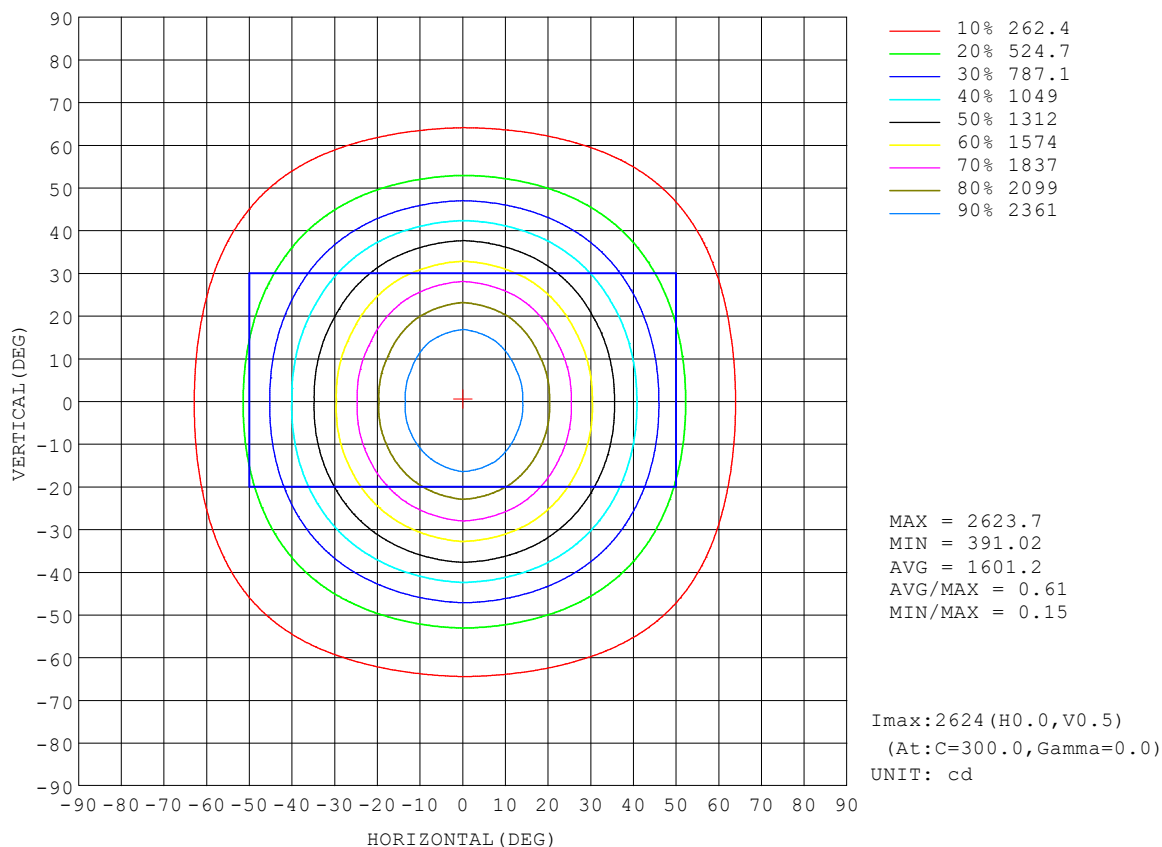
REFLECTANCE										
Ceiling	0.8	0.8	0.8	0.7	0.7	0.7	0.5	0.5	0.5	0
Walls	0.7	0.5	0.3	0.7	0.5	0.3	0.7	0.5	0.3	0
Working plane	0.2	0.2	0.2	0.2	0.2	0.2	0.2	0.2	0.2	0
ROOM INDEX	UTILIZATION FACTORS (PERCENT) $k(RI) \times RCR = 5$									
$k = 0.60$	69	60	54	69	59	54	67	59	54	48
0.80	79	69	64	78	69	63	76	68	63	57
1.00	86	77	71	85	77	71	83	77	71	65
1.25	92	84	78	91	83	78	88	82	77	71
1.50	96	88	83	95	88	83	92	86	81	75
2.00	101	95	90	100	94	89	96	91	87	81
2.50	104	98	94	102	97	93	99	94	91	83
3.00	107	101	97	105	100	96	101	97	94	86
4.00	110	105	102	107	104	100	103	100	98	89
5.00	111	108	105	109	106	103	105	102	100	91
ROOM INDEX	UF (total)									Direct
According to DIN EN 13032-2 2004			Suspended					SHRNOM = 1.25		

C Range: 0 - 360DEG  
C Interval: 30.0DEG  
Test Speed: HIGH  
Temperature: 25.3°C  
Operators:  
Test Date: 2026-04-21

γ Range: 0 - 180DEG  
γ Interval: 1.0DEG  
Test System: EVERFINE GO-3000H\_V1 SYSTEM V2.00.471  
Humidity: 65.0%  
Test Distance: 12.177m [K=1.0000]  
Remarks:

### ISOCANDELA DIAGRAM

Test:U:231.09V I:0.1561A P:34.929W PF:0.9682 Freq:49.99Hz UTHDi:0.00% ITHDi:0.00% KDisp:0 Lamp Flux:4122.63x1 lm		
NAME: 62001000501.35W.4K	TYPE: 62001000501.35W.4K	WEIGHT:
SPEC.: 62001000501.35W.4K	DIM.: 1438*65*42mm	SERIAL No.:
MFR.:	SUR.: 1432*57mm	Shielding Angle:



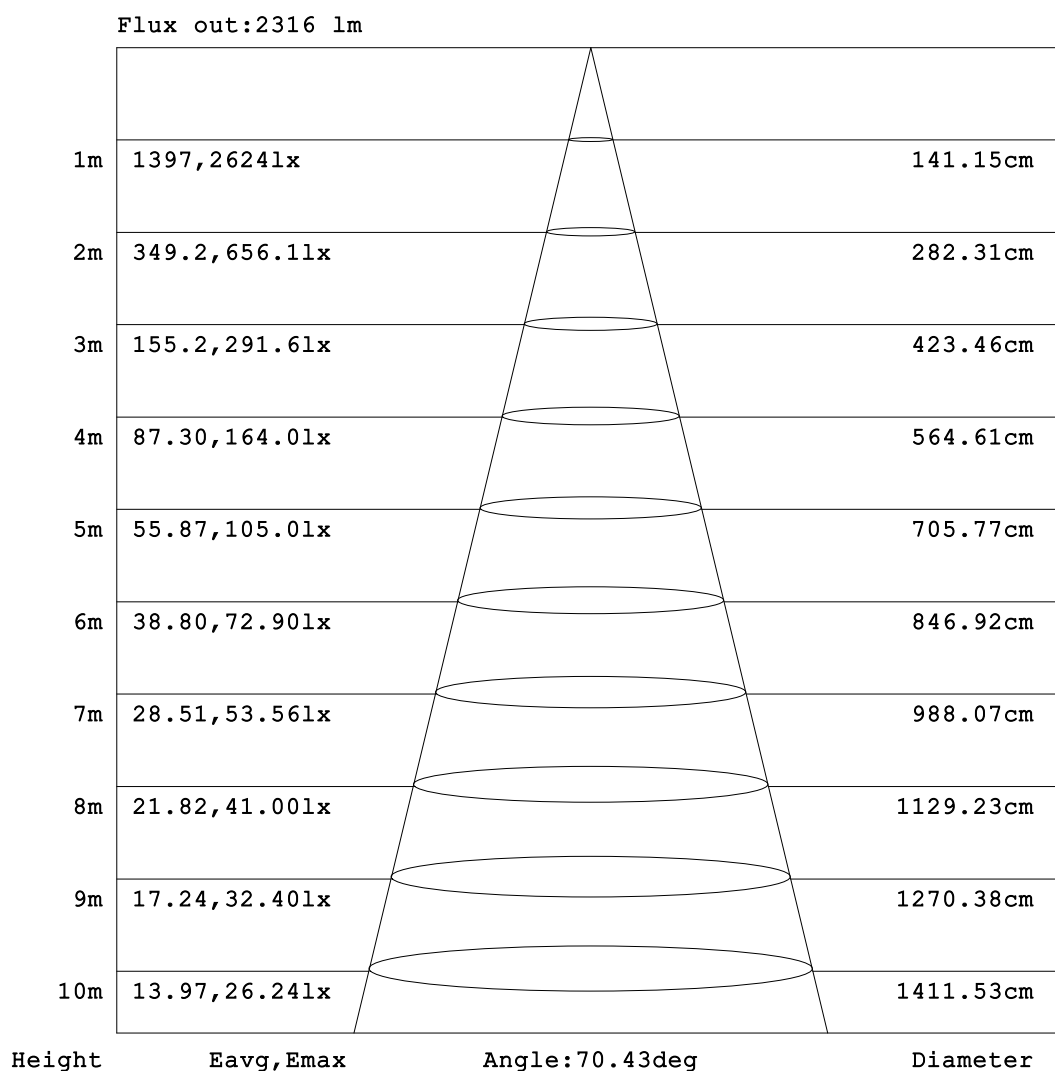
C Range: 0 - 360DEG  
C Interval: 30.0DEG  
Test Speed: HIGH  
Temperature:25.3℃  
Operators:  
Test Date:2026-04-21

γ Range: 0 - 180DEG  
γ Interval: 1.0DEG  
Test System:EVERFINE GO-3000H\_V1 SYSTEM V2.00.471  
Humidity:65.0%  
Test Distance:12.177m [K=1.0000]  
Remarks:



**AAI Figure**

Test:U:231.09V I:0.1561A P:34.929W PF:0.9682 Freq:49.99Hz UTHDi:0.00% ITHDi:0.00% KDisp:0 Lamp Flux:4122.63x1 lm		
NAME: 62001000501.35W.4K	TYPE: 62001000501.35W.4K	WEIGHT:
SPEC.: 62001000501.35W.4K	DIM.: 1438*65*42mm	SERIAL No.:
MFR.:	SUR.: 1432*57mm	Shielding Angle:



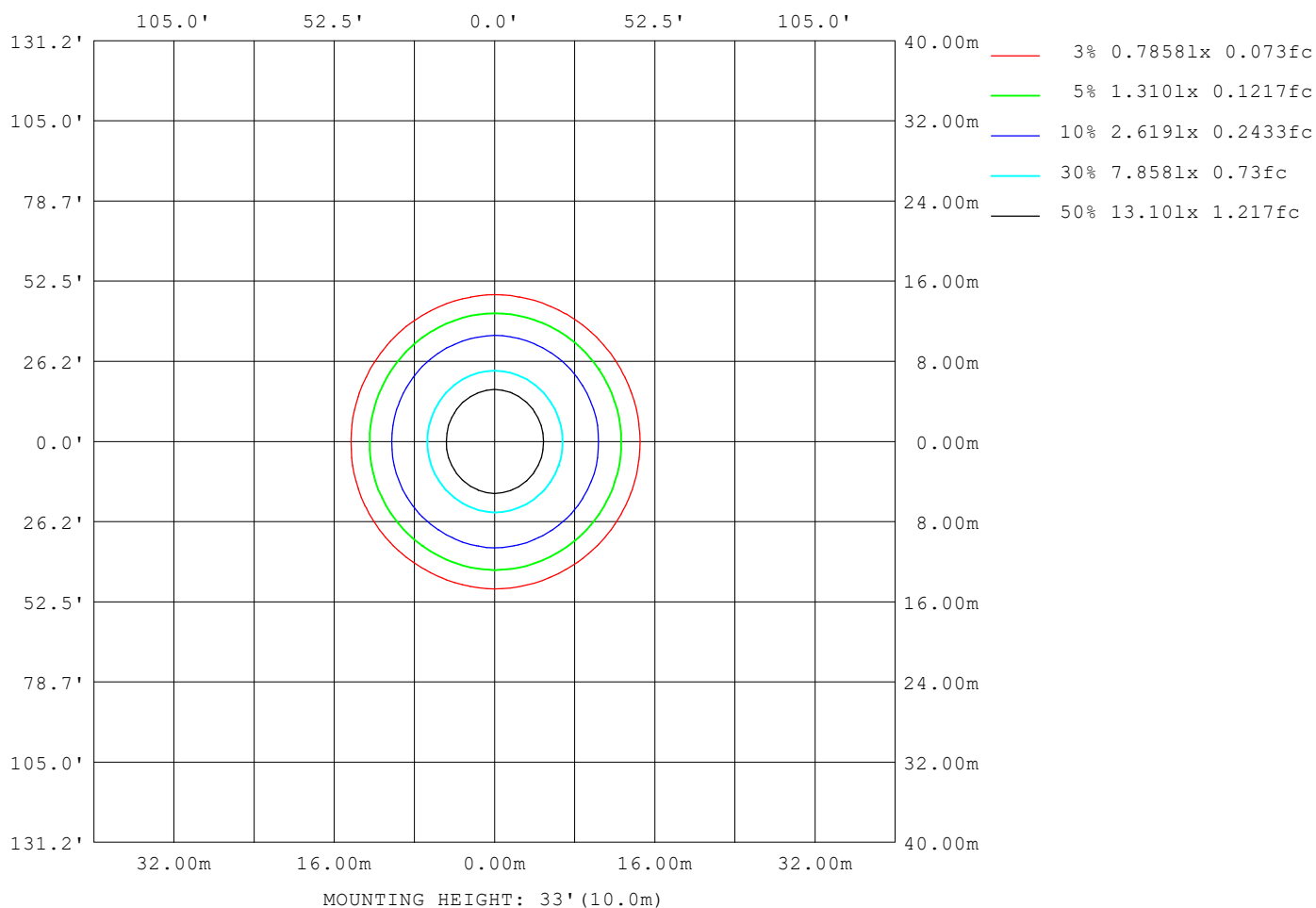
Note:The Curves indicate the illuminated area and the average illumination when the luminaire is at different distance.

C Range: 0 - 360DEG  
 C Interval: 30.0DEG  
 Test Speed: HIGH  
 Temperature:25.3℃  
 Operators:  
 Test Date:2026-04-21

γ Range: 0 - 180DEG  
 γ Interval: 1.0DEG  
 Test System:EVERFINE GO-3000H\_V1 SYSTEM V2.00.471  
 Humidity:65.0%  
 Test Distance:12.177m [K=1.0000]  
 Remarks:

### ISOLUX DIAGRAM

Test:U:231.09V I:0.1561A P:34.929W PF:0.9682 Freq:49.99Hz UTHDi:0.00% ITHDi:0.00% KDisp:0 Lamp Flux:4122.63x1 lm		
NAME: 62001000501.35W.4K	TYPE: 62001000501.35W.4K	WEIGHT:
SPEC.: 62001000501.35W.4K	DIM.: 1438*65*42mm	SERIAL No.:
MFR.:	SUR.: 1432*57mm	Shielding Angle:



C Range: 0 - 360DEG  
C Interval: 30.0DEG  
Test Speed: HIGH  
Temperature:25.3℃  
Operators:  
Test Date:2026-04-21

γ Range: 0 - 180DEG  
γ Interval: 1.0DEG  
Test System:EVERFINE GO-3000H\_V1 SYSTEM V2.00.471  
Humidity:65.0%  
Test Distance:12.177m [K=1.0000]  
Remarks:

### LED Avg.L Report

Test:U:231.09V I:0.1561A P:34.929W PF:0.9682 Freq:49.99Hz UTHDi:0.00% ITHDi:0.00% KDisp:0 Lamp Flux:4122.63x1 lm		
NAME: 62001000501.35W.4K	TYPE: 62001000501.35W.4K	WEIGHT:
SPEC.: 62001000501.35W.4K	DIM.: 1438*65*42mm	SERIAL No.:
MFR.:	SUR.: 1432*57mm	Shielding Angle:

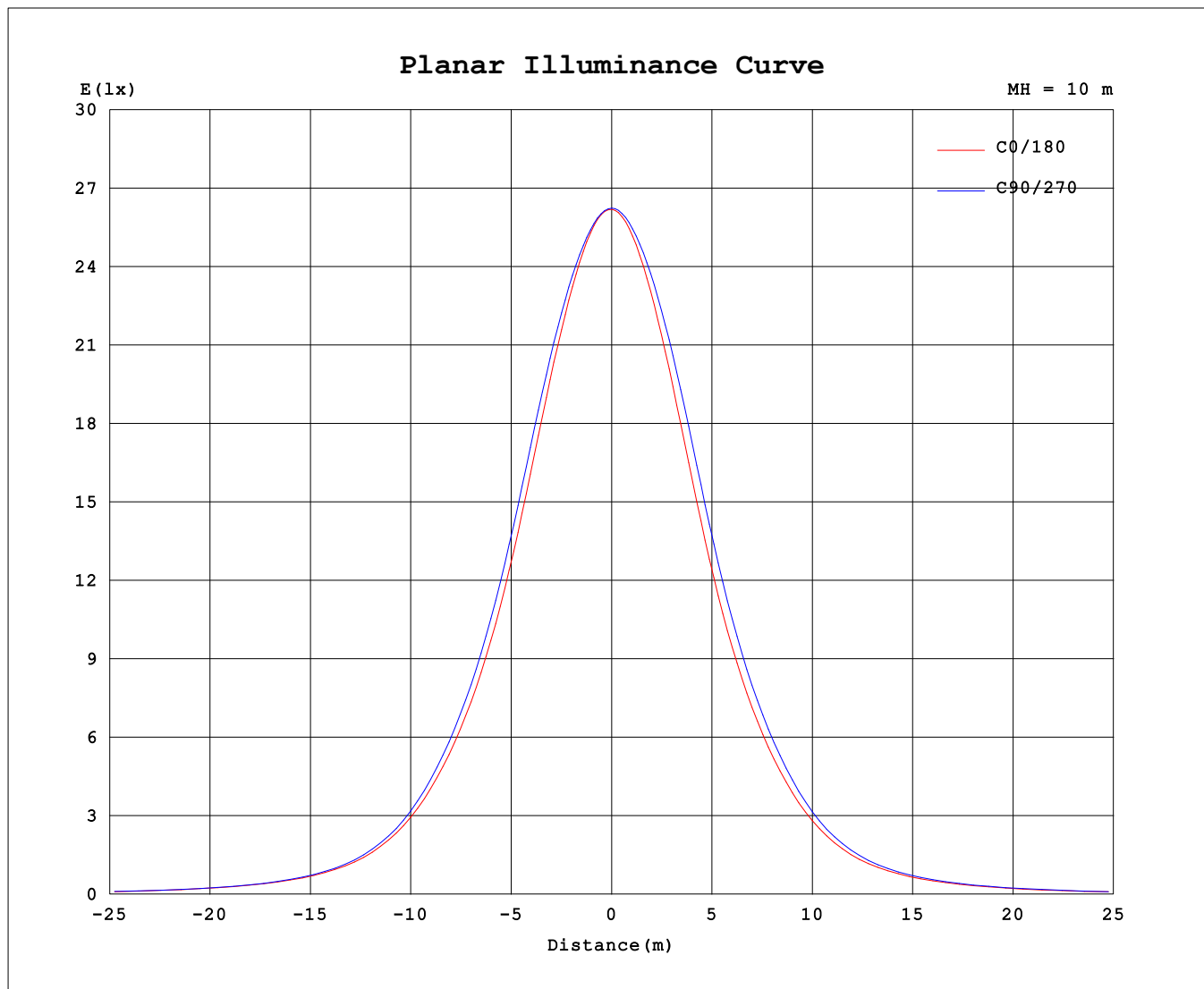
AvgL	cd/m2
L_0~180 (65) av	6873
L_0~180 (75) av	5154
L_0~180 (85) av	2926
L_90~270 (65) av	7225
L_90~270 (75) av	5442
L_90~270 (85) av	2771
L_45 (65) av	6973
L_45 (75) av	5211
L_45 (85) av	2913

Standard: GB/T 29293-2012

C Range: 0 - 360DEG  
C Interval: 30.0DEG  
Test Speed: HIGH  
Temperature:25.3℃  
Operators:  
Test Date:2026-04-21

γ Range: 0 - 180DEG  
γ Interval: 1.0DEG  
Test System:EVERFINE GO-3000H\_V1 SYSTEM V2.00.471  
Humidity:65.0%  
Test Distance:12.177m [K=1.0000]  
Remarks:

## Planar Illuminance Curve



C Range: 0 - 360DEG  
C Interval: 30.0DEG  
Test Speed: HIGH  
Temperature: 25.3 °C  
Operators:  
Test Date: 2026-04-21

$\gamma$  Range: 0 - 180DEG  
 $\gamma$  Interval: 1.0DEG  
Test System: EVERFINE GO-3000H\_V1 SYSTEM V2.00.471  
Humidity: 65.0%  
Test Distance: 12.177m [K=1.0000]  
Remarks:

### LUMINOUS DISTRIBUTION INTENSITY DATA

Test:U:231.09V I:0.1561A P:34.929W PF:0.9682 Freq:49.99Hz		
UTHDi:0.00% ITHDi:0.00% KDisp:0 Lamp Flux:4122.63x1 lm		
NAME: 62001000501.35W.4K	TYPE: 62001000501.35W.4K	WEIGHT:
SPEC.: 62001000501.35W.4K	DIM.: 1438*65*42mm	SERIAL No.:
MFR.:	SUR.: 1432*57mm	Shielding Angle:

Table--1

UNIT: cd

C (DEG) γ (DEG)	0	30	60	90	120	150	180	210	240	270	300	330							
0	2623	2623	2623	2623	2623	2623	2623	2623	2623	2623	2623	2623							
5	2590	2592	2593	2593	2588	2584	2579	2582	2592	2596	2595	2589							
10	2486	2496	2513	2520	2503	2484	2470	2481	2511	2527	2516	2493							
15	2331	2352	2390	2405	2372	2331	2307	2331	2389	2415	2391	2343							
20	2118	2150	2205	2232	2186	2122	2082	2116	2198	2241	2208	2138							
25	1862	1900	1964	1996	1940	1865	1822	1859	1950	2001	1964	1883							
30	1596	1634	1697	1728	1668	1596	1555	1590	1678	1727	1689	1613							
35	1341	1376	1429	1458	1400	1339	1303	1332	1407	1453	1416	1355							
40	1092	1121	1160	1187	1134	1086	1053	1077	1137	1180	1150	1102							
45	834	858	882	902	856	825	797	814	856	893	869	840							
50	610	623	637	651	619	599	577	584	616	641	629	611							
55	442	448	454	464	444	432	419	422	439	457	450	441							
60	330	333	336	341	328	320	312	314	323	334	329	327							
65	246	249	249	254	244	238	230	231	237	247	244	244							
70	177	180	179	182	172	169	163	164	167	176	173	175							
75	115	117	116	118	110	109	103	104	105	113	112	113							
80	62.0	63.4	61.5	62.1	57.0	56.9	53.0	53.4	54.2	58.2	59.1	60.5							
85	23.2	24.0	22.1	20.8	19.7	20.3	18.6	18.5	18.4	18.8	21.0	22.2							
90	6.55	2.05	2.06	1.66	1.77	1.19	0.93	1.49	1.79	1.07	1.80	1.50							
95	2.38	1.07	1.00	0.82	0.96	0.99	1.07	1.16	1.15	0.99	1.18	1.11							
100	0.83	1.06	1.04	1.11	1.05	1.16	1.29	1.20	1.38	1.19	1.26	1.14							
105	1.06	1.28	1.24	1.48	1.38	1.42	1.57	1.51	1.73	1.60	1.59	1.33							
110	1.38	1.60	1.66	1.95	1.81	1.80	1.97	1.92	2.21	2.09	2.01	1.68							
115	1.81	2.01	2.16	2.48	2.32	2.23	2.46	2.45	2.79	2.68	2.58	2.18							
120	2.33	2.56	2.75	3.11	2.92	2.79	3.05	3.08	3.45	3.35	3.21	2.81							
125	2.96	3.22	3.43	3.81	3.62	3.46	3.75	3.80	4.13	4.06	3.94	3.51							
130	3.68	3.96	4.13	4.54	4.33	4.16	4.48	4.55	4.91	4.83	4.68	4.25							
135	4.44	4.72	4.93	5.32	5.14	4.97	5.31	5.40	5.72	5.65	5.50	5.08							
140	5.27	5.56	5.73	6.13	5.97	5.81	6.17	6.24	6.55	6.45	6.30	5.94							
145	6.15	6.42	6.55	6.93	6.78	6.69	7.03	7.11	7.37	7.27	7.14	6.80							
150	7.03	7.29	7.38	7.72	7.60	7.54	7.91	7.92	8.20	8.07	7.96	7.68							
155	7.93	8.15	8.17	8.51	8.42	8.39	8.75	8.72	8.98	8.84	8.75	8.51							
160	8.80	8.95	8.95	9.24	9.18	9.18	9.58	9.50	9.69	9.54	9.52	9.32							
165	9.64	9.73	9.67	9.92	9.86	9.92	10.4	10.2	10.3	10.1	10.2	10.0							
170	10.4	10.4	10.3	10.5	10.4	10.6	11.0	10.7	10.8	10.6	10.7	10.6							
175	10.9	10.8	10.7	10.8	10.8	10.8	11.1	10.9	10.9	10.8	10.8	10.9							
180	11.0	10.9	10.8	10.8	10.9	10.9	11.1	10.9	10.9	10.9	10.9	10.9							

C Range: 0 - 360DEG  
C Interval: 30.0DEG  
Test Speed: HIGH  
Temperature:25.3℃  
Operators:  
Test Date:2026-04-21

γ Range: 0 - 180DEG  
γ Interval: 1.0DEG  
Test System:EVERFINE GO-3000H\_V1 SYSTEM V2.00.471  
Humidity:65.0%  
Test Distance:12.177m [K=1.0000]  
Remarks: