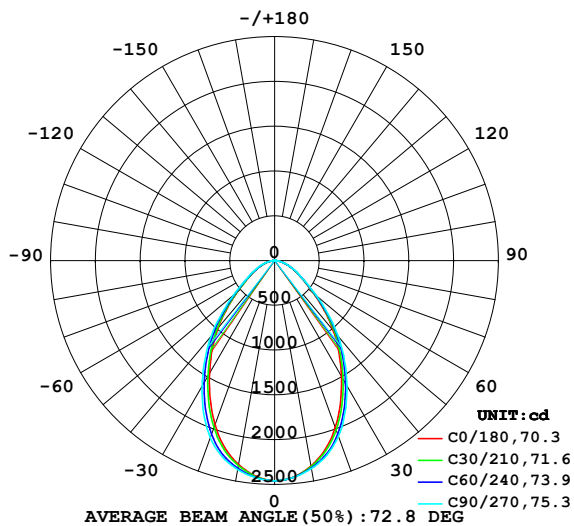


LUMINAIRE PHOTOMETRIC TEST REPORT

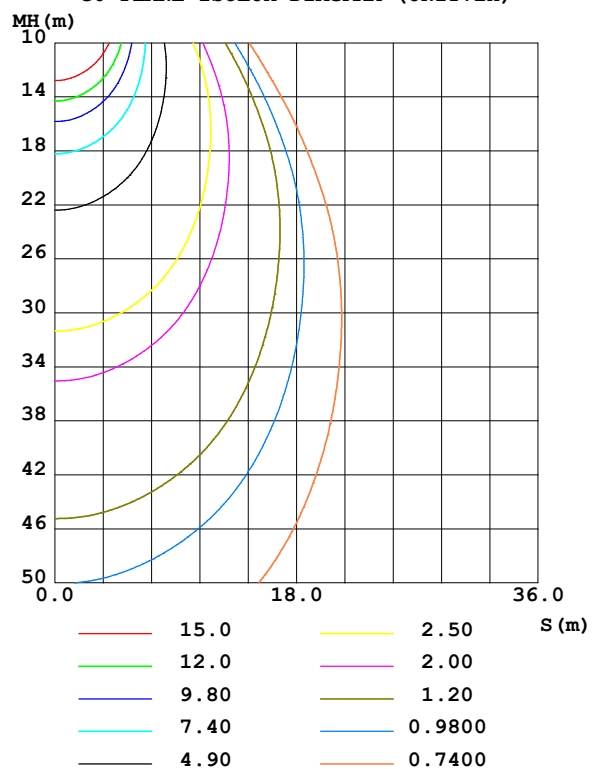
Test:U:231.09V I:0.1561A P:34.925W PF:0.9682 Freq:49.99Hz UTHDi:0.00% ITHDi:0.00% KDisp:0 Lamp Flux:3855.36x1 lm		
NAME: 62001000501.35W.3K	TYPE: 62001000501.35W.3K	WEIGHT:
SPEC.: 62001000501.35W.3K	DIM.: 1438*65*42mm	SERIAL No.:
MFR.:	SUR.: 1432*57mm	Shielding Angle:

DATA OF LAMP		PHOTOMETRIC DATA				Eff: 110.39 lm/W
MODEL	62001000501.35W.3K	I _{max} (cd)	2458	S/MH(C0/180)	0.96	
NOMINAL POWER(W)		LOR(%)	100.0	S/MH(C90/270)	1.04	
RATED VOLTAGE(V)	230	TOTAL FLUX(lm)	3855.4	η UP,DN(C0-180)	0.3,50.0	
NOMINAL FLUX(lm)	3855.36	CIE CLASS	DIRECT	η UP,DN(C180-360)	0.3,49.5	
LAMPS INSIDE	1	η up (%)	0.6	CIBSE SHR NOM	1.00	
TEST VOLTAGE(V)	230	η down (%)	99.4	CIBSE SHR MAX	1.10	

LUMINOUS INTENSITY DISTRIBUTION DIAGRAM



C0 PLANE ISOLUX DIAGRAM (UNIT:lx)



C Range: 0 - 360DEG
C Interval: 30.0DEG
Test Speed: HIGH
Temperature: 25.3 °C
Operators:
Test Date: 2026-04-21

γ Range: 0 - 180DEG
γ Interval: 1.0DEG
Test System: EVERFINE GO-3000H_V1 SYSTEM V2.00.471
Humidity: 65.0%
Test Distance: 12.177m [K=1.0000]
Remarks:

ZONAL FLUX DIAGRAM

ZONAL FLUX DIAGRAM:

γ	C0	C45	C90	C135	C180	C225	C270	C315	γ	Φ zone	Φ total	%lum, lamp
10	2330	2345	2358	2335	2313	2341	2370	2348	0- 10	228.9	228.9	5.94,5.94
20	1983	2037	2087	2014	1949	2023	2103	2037	10- 20	620.0	848.9	22,22
30	1494	1557	1616	1526	1455	1532	1620	1547	20- 30	822.4	1671	43.3,43.3
40	1021	1066	1108	1037	983.8	1036	1106	1053	30- 40	807.5	2479	64.3,64.3
50	570.0	587.9	607.7	568.0	538.7	561.0	599.3	579.2	40- 50	616.6	3095	80.3,80.3
60	307.7	311.9	317.5	302.0	290.7	297.0	311.5	305.9	50- 60	376.2	3472	90,90
70	165.1	166.8	169.6	158.9	151.8	154.2	163.5	162.0	60- 70	226.0	3698	95.9,95.9
80	57.76	58.03	57.70	52.87	49.30	50.07	54.24	55.62	70- 80	110.7	3808	98.8,98.8
90	1.078	1.869	1.528	1.367	0.8658	1.518	0.9286	1.525	80- 90	24.45	3833	99.4,99.4
100	0.7745	0.9761	1.025	1.018	1.196	1.195	1.125	1.119	90-100	1.108	3834	99.4,99.4
110	1.264	1.491	1.798	1.655	1.835	1.929	1.933	1.723	100-110	1.421	3835	99.5,99.5
120	2.152	2.469	2.878	2.651	2.836	3.022	3.116	2.803	110-120	2.167	3837	99.5,99.5
130	3.405	3.773	4.198	3.958	4.159	4.399	4.502	4.158	120-130	3.031	3840	99.6,99.6
140	4.899	5.241	5.678	5.460	5.731	5.947	6.004	5.699	130-140	3.713	3844	99.7,99.7
150	6.526	6.807	7.167	7.035	7.349	7.512	7.495	7.262	140-150	3.979	3848	99.8,99.8
160	8.168	8.315	8.577	8.519	8.920	8.929	8.872	8.770	150-160	3.636	3852	99.9,99.9
170	9.672	9.612	9.748	9.771	10.21	9.965	9.838	9.902	160-170	2.610	3854	100,100
180	10.23	10.10	10.07	10.10	10.34	10.16	10.09	10.12	170-180	0.9562	3855	100,100
DEG	LUMINOUS INTENSITY:cd									UNIT:lm		

Conical surface Flux(90deg): 2820 lm

%lum = 73.1%

%lamp = 73.1%

Conical surface Flux(130deg): 3600 lm

%lum = 93.4%

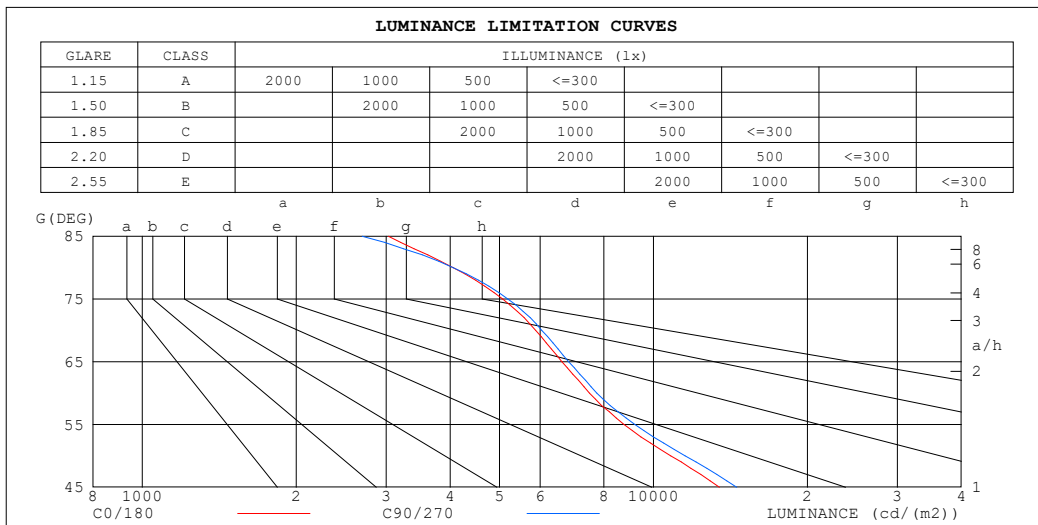
%lamp = 93.4%

C Range: 0 - 360DEG
C Interval: 30.0DEG
Test Speed: HIGH
Temperature:25.3℃
Operators:
Test Date:2026-04-21

γ Range: 0 - 180DEG
 γ Interval: 1.0DEG
Test System:EVERFINE GO-3000H_V1 SYSTEM V2.00.471
Humidity:65.0%
Test Distance:12.177m [K=1.0000]
Remarks:

LUMINANCE LIMITATION CURVES

Test:U:231.09V I:0.1561A P:34.925W PF:0.9682 Freq:49.99Hz UTHDi:0.00% ITHDi:0.00% KDisp:0 Lamp Flux:3855.36x1 lm		
NAME: 62001000501.35W.3K	TYPE: 62001000501.35W.3K	WEIGHT:
SPEC.: 62001000501.35W.3K	DIM.: 1438*65*42mm	SERIAL No.:
MFR.:	SUR.: 1432*57mm	Shielding Angle:



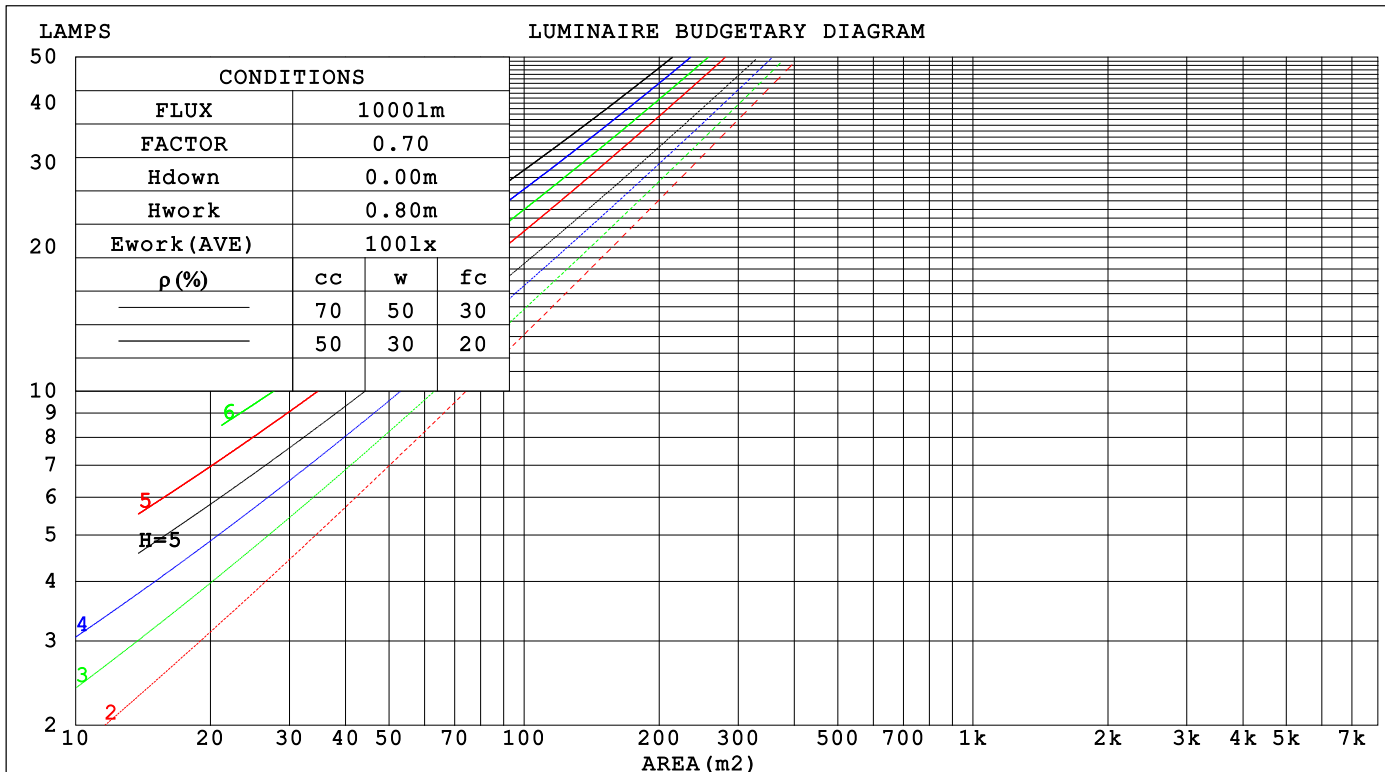
C Range: 0 - 360DEG
C Interval: 30.0DEG
Test Speed: HIGH
Temperature: 25.3°C
Operators:
Test Date: 2026-04-21

γ Range: 0 - 180DEG
γ Interval: 1.0DEG
Test System: EVERFINE GO-3000H_V1 SYSTEM V2.00.471
Humidity: 65.0%
Test Distance: 12.177m [K=1.0000]
Remarks:

CU AND LUMINAIRE BUDGETARY ESTIMATE DIAGRAM

Test:U:231.09V I:0.1561A P:34.925W PF:0.9682 Freq:49.99Hz		
UTHDi:0.00% ITHDi:0.00% KDisp:0 Lamp Flux:3855.36x1 lm		
NAME: 62001000501.35W.3K	TYPE: 62001000501.35W.3K	WEIGHT:
SPEC.: 62001000501.35W.3K	DIM.: 1438*65*42mm	SERIAL No.:
MFR.:	SUR.: 1432*57mm	Shielding Angle:

pcc	80%			70%			50%			30%			10%			0
pw	50%	30%	10%	50%	30%	10%	50%	30%	10%	50%	30%	10%	50%	30%	10%	0
pfc	20%			20%			20%			20%			20%			0
RCR	RCR:Room Cavity Ratio															



C Range: 0 - 360DEG
C Interval: 30.0DEG
Test Speed: HIGH
Temperature:25.3℃
Operators:
Test Date:2026-04-21

γ Range: 0 - 180DEG
γ Interval: 1.0DEG
Test System:EVERFINE GO-3000H_V1 SYSTEM V2.00.471
Humidity:65.0%
Test Distance:12.177m [K=1.0000]
Remarks:

WEC AND CCEC

Test:U:231.09V I:0.1561A P:34.925W PF:0.9682 Freq:49.99Hz		
UTHDi:0.00% ITHDi:0.00% KDisp:0 Lamp Flux:3855.36x1 lm		
NAME: 62001000501.35W.3K	TYPE: 62001000501.35W.3K	WEIGHT:
SPEC.: 62001000501.35W.3K	DIM.: 1438*65*42mm	SERIAL No.:
MFR.:	SUR.: 1432*57mm	Shielding Angle:

pcc	80%			70%			50%			30%			10%			0	
pw	50%	30%	10%	50%	30%	10%	50%	30%	10%	50%	30%	10%	50%	30%	10%	0	
pfc	20%			20%			20%			20%			20%			0	
RCR	RCR:Room Cavity Ratio						Wall Exitance Coefficients(WEC)										
0.0																	
1.0	.243	.138	.044	.236	.135	.043	.223	.128	.041	.211	.121	.039	.199	.116	.037		
2.0	.233	.128	.039	.227	.125	.039	.216	.120	.037	.205	.115	.036	.195	.110	.035		
3.0	.220	.117	.035	.215	.115	.035	.205	.111	.034	.195	.107	.033	.187	.103	.032		
4.0	.207	.107	.032	.202	.106	.031	.193	.102	.031	.185	.099	.030	.177	.096	.029		
5.0	.194	.099	.029	.190	.097	.028	.182	.095	.028	.175	.092	.027	.168	.090	.027		
6.0	.182	.091	.026	.179	.090	.026	.172	.088	.026	.165	.086	.025	.159	.084	.025		
7.0	.172	.085	.024	.169	.084	.024	.162	.082	.024	.157	.080	.023	.151	.079	.023		
8.0	.162	.079	.022	.159	.078	.022	.154	.077	.022	.149	.075	.022	.144	.074	.021		
9.0	.154	.074	.021	.151	.074	.021	.146	.072	.020	.141	.071	.020	.137	.069	.020		
10.0	.146	.070	.019	.143	.069	.019	.139	.068	.019	.134	.067	.019	.130	.066	.019		

pcc	80%			70%			50%			30%			10%			0	
pw	50%	30%	10%	50%	30%	10%	50%	30%	10%	50%	30%	10%	50%	30%	10%	0	
pfc	20%			20%			20%			20%			20%			0	
RCR	RCR:Room Cavity Ratio						Ceiling Cavity Exitance Coefficients (CCEC)										
0.0	.195	.195	.195	.167	.167	.167	.114	.114	.114	.065	.065	.065	.021	.021	.021		
1.0	.180	.161	.144	.154	.138	.124	.105	.095	.086	.061	.055	.050	.019	.018	.016		
2.0	.169	.137	.110	.145	.118	.095	.099	.081	.066	.057	.047	.039	.018	.015	.013		
3.0	.159	.119	.086	.137	.102	.074	.094	.071	.052	.054	.041	.031	.017	.013	.010		
4.0	.151	.105	.069	.130	.090	.060	.089	.063	.042	.052	.037	.025	.017	.012	.008		
5.0	.143	.094	.057	.123	.081	.050	.085	.057	.035	.049	.033	.021	.016	.011	.007		
6.0	.136	.085	.048	.117	.074	.042	.081	.052	.030	.047	.030	.018	.015	.010	.006		
7.0	.130	.078	.041	.112	.068	.036	.077	.047	.026	.045	.028	.015	.014	.009	.005		
8.0	.124	.072	.036	.107	.062	.032	.074	.044	.022	.043	.026	.013	.014	.008	.004		
9.0	.118	.067	.032	.102	.058	.028	.071	.041	.020	.041	.024	.012	.013	.008	.004		
10.0	.113	.063	.029	.098	.054	.025	.068	.038	.018	.040	.023	.011	.013	.007	.004		

C Range: 0 - 360DEG
C Interval: 30.0DEG
Test Speed: HIGH
Temperature:25.3℃
Operators:
Test Date:2026-04-21

γ Range: 0 - 180DEG
γ Interval: 1.0DEG
Test System:EVERFINE GO-3000H_V1 SYSTEM V2.00.471
Humidity:65.0%
Test Distance:12.177m [K=1.0000]
Remarks:

UGR(Unified Glare Rating) Table

Test:U:231.09V I:0.1561A P:34.925W PF:0.9682 Freq:49.99Hz UTHDi:0.00% ITHDi:0.00% KDisp:0 Lamp Flux:3855.36x1 lm										
NAME: 62001000501.35W.3K					TYPE: 62001000501.35W.3K			WEIGHT:		
SPEC.: 62001000501.35W.3K					DIM.: 1438*65*42mm			SERIAL No.:		
MFR.:					SUR.: 1432*57mm			Shielding Angle:		
ceiling/cavity	0.7	0.7	0.5	0.5	0.3	0.7	0.7	0.5	0.5	0.3
walls	0.5	0.3	0.5	0.3	0.3	0.5	0.3	0.5	0.3	0.3
working plane	0.2	0.2	0.2	0.2	0.2	0.2	0.2	0.2	0.2	0.2
Room dimensions	Viewed crosswise					Viewed endwise				
x = 2H y = 2H	19.5	20.7	19.7	20.9	21.1	19.7	21.0	20.0	21.2	21.4
3H	20.2	21.4	20.5	21.6	21.8	20.4	21.6	20.7	21.8	22.0
4H	20.5	21.6	20.8	21.8	22.1	20.7	21.8	21.0	22.0	22.3
6H	20.6	21.7	21.0	22.0	22.2	20.8	21.9	21.2	22.1	22.4
8H	20.7	21.7	21.0	22.0	22.2	20.9	21.9	21.2	22.1	22.4
12H	20.7	21.6	21.0	21.9	22.2	20.8	21.8	21.2	22.1	22.4
4H 2H	19.7	20.8	20.0	21.1	21.3	19.9	21.0	20.2	21.3	21.5
3H	20.7	21.6	21.0	21.9	22.2	20.8	21.8	21.2	22.1	22.4
4H	21.1	21.9	21.4	22.2	22.6	21.2	22.1	21.6	22.4	22.7
6H	21.3	22.1	21.7	22.4	22.8	21.4	22.2	21.8	22.6	22.9
8H	21.4	22.1	21.8	22.5	22.9	21.5	22.2	21.9	22.6	23.0
12H	21.4	22.1	21.8	22.4	22.9	21.5	22.2	21.9	22.6	23.0
8H 4H	21.2	21.9	21.6	22.2	22.6	21.3	22.0	21.7	22.4	22.8
6H	21.5	22.1	22.0	22.5	22.9	21.6	22.2	22.1	22.6	23.1
8H	21.6	22.1	22.1	22.6	23.0	21.7	22.2	22.2	22.7	23.1
12H	21.7	22.1	22.2	22.6	23.1	21.8	22.2	22.3	22.7	23.2
12H 4H	21.1	21.8	21.6	22.2	22.6	21.3	21.9	21.7	22.3	22.7
6H	21.5	22.0	22.0	22.5	22.9	21.6	22.2	22.1	22.6	23.0
8H	21.7	22.1	22.1	22.6	23.0	21.8	22.2	22.2	22.7	23.1
Variations with the observer position at spacings(CIE Pub.117):										
S = 1.0H	+ 0.6 / - 0.7					+ 0.6 / - 0.7				
1.5H	+ 0.4 / - 0.5					+ 0.5 / - 0.5				
2.0H	+ 1.2 / - 0.8					+ 1.3 / - 0.8				

CIE Pub.117, 3855 lm Total Lamp Luminous Flux Corrected (8log(F/F0) = 4.7)
Area: 0.082 m2

C Range: 0 - 360DEG
C Interval: 30.0DEG
Test Speed: HIGH
Temperature:25.3℃
Operators:
Test Date:2026-04-21

γ Range: 0 - 180DEG
γ Interval: 1.0DEG
Test System:EVERFINE GO-3000H_V1 SYSTEM V2.00.471
Humidity:65.0%
Test Distance:12.177m [K=1.0000]
Remarks:

UTILIZATION FACTORS TABLE

Test:U:231.09V I:0.1561A P:34.925W PF:0.9682 Freq:49.99Hz		
UTHDi:0.00% ITHDi:0.00% KDisp:0 Lamp Flux:3855.36x1 lm		
NAME: 62001000501.35W.3K	TYPE: 62001000501.35W.3K	WEIGHT:
SPEC.: 62001000501.35W.3K	DIM.: 1438*65*42mm	SERIAL No.:
MFR.:	SUR.: 1432*57mm	Shielding Angle:

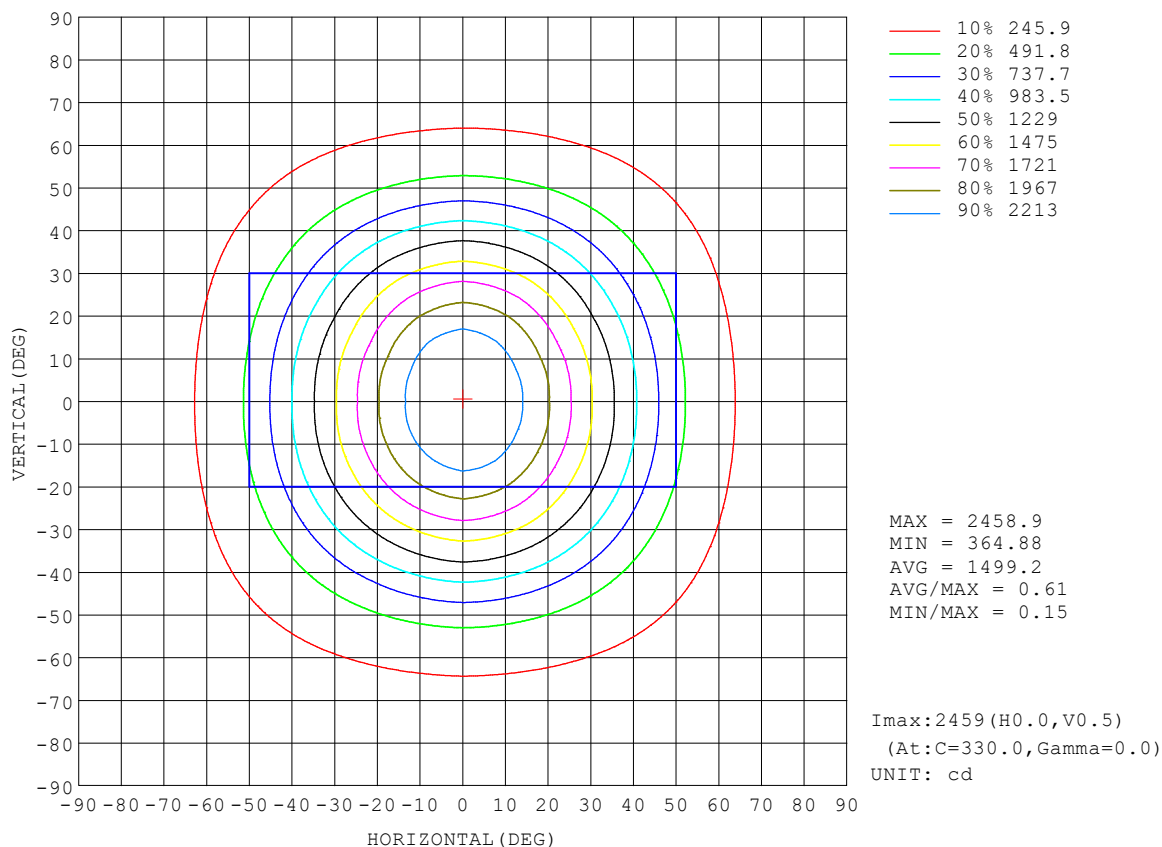
REFLECTANCE										
Ceiling	0.8	0.8	0.8	0.7	0.7	0.7	0.5	0.5	0.5	0
Walls	0.7	0.5	0.3	0.7	0.5	0.3	0.7	0.5	0.3	0
Working plane	0.2	0.2	0.2	0.2	0.2	0.2	0.2	0.2	0.2	0
ROOM INDEX	UTILIZATION FACTORS (PERCENT) $k(RI) \times RCR = 5$									
$k = 0.60$	69	60	54	69	59	54	68	59	54	48
0.80	79	69	64	78	69	63	76	68	63	57
1.00	86	77	72	85	77	71	83	77	71	65
1.25	92	84	78	91	83	78	88	82	77	71
1.50	96	89	83	95	88	83	92	86	82	75
2.00	101	95	90	100	94	89	96	91	87	81
2.50	104	98	94	102	97	93	99	94	91	83
3.00	107	101	97	105	100	96	101	97	94	86
4.00	110	105	102	107	104	100	103	100	98	89
5.00	111	108	105	109	106	103	105	102	100	91
ROOM INDEX	UF (total)									Direct
According to DIN EN 13032-2 2004			Suspended					SHRNOM = 1.25		

C Range: 0 - 360DEG
C Interval: 30.0DEG
Test Speed: HIGH
Temperature: 25.3 °C
Operators:
Test Date: 2026-04-21

γ Range: 0 - 180DEG
γ Interval: 1.0DEG
Test System: EVERFINE GO-3000H_V1 SYSTEM V2.00.471
Humidity: 65.0%
Test Distance: 12.177m [K=1.0000]
Remarks:

ISOCANDELA DIAGRAM

Test:U:231.09V I:0.1561A P:34.925W PF:0.9682 Freq:49.99Hz UTHDi:0.00% ITHDi:0.00% KDisp:0 Lamp Flux:3855.36x1 lm		
NAME: 62001000501.35W.3K	TYPE: 62001000501.35W.3K	WEIGHT:
SPEC.: 62001000501.35W.3K	DIM.: 1438*65*42mm	SERIAL No.:
MFR.:	SUR.: 1432*57mm	Shielding Angle:

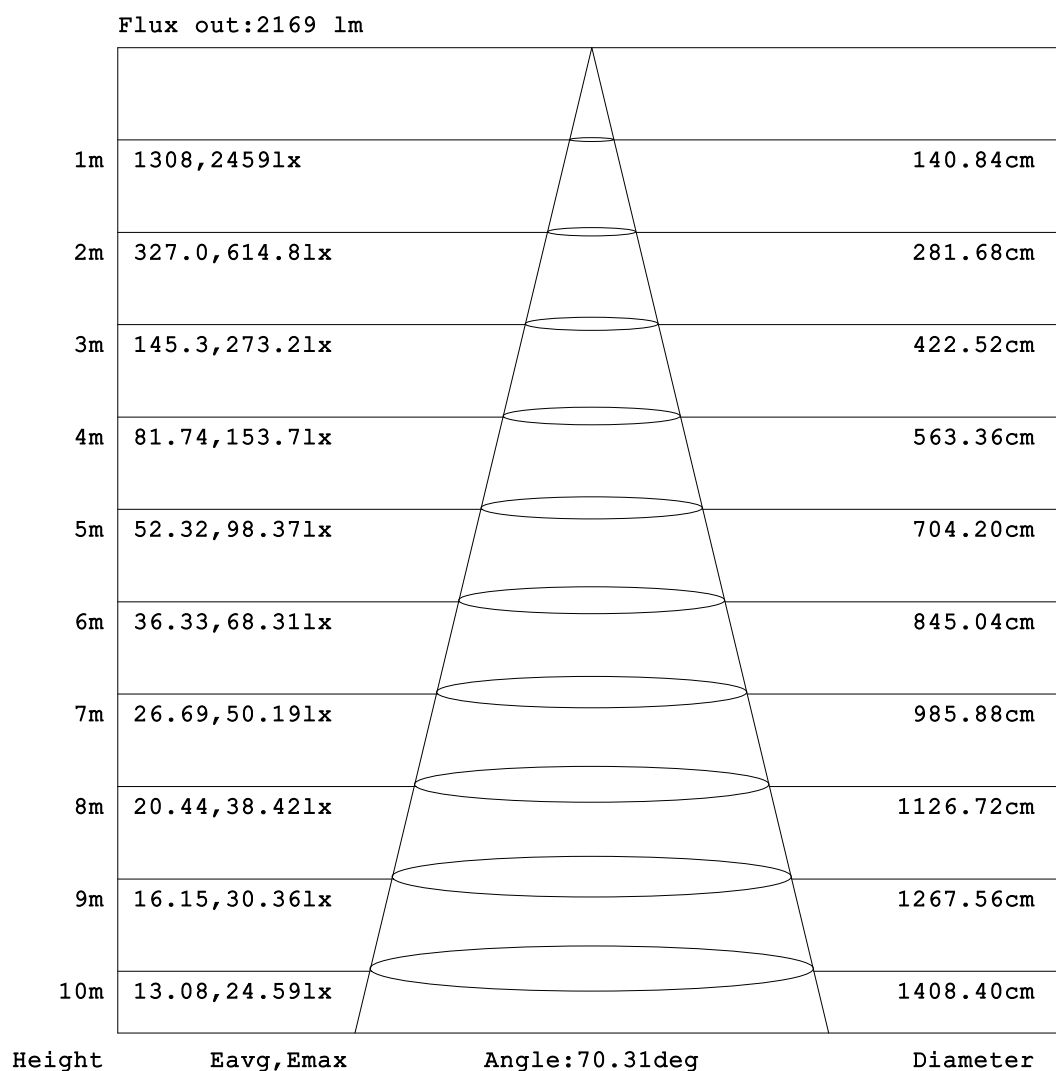


C Range: 0 - 360DEG
C Interval: 30.0DEG
Test Speed: HIGH
Temperature:25.3℃
Operators:
Test Date:2026-04-21

γ Range: 0 - 180DEG
γ Interval: 1.0DEG
Test System:EVERFINE GO-3000H_V1 SYSTEM V2.00.471
Humidity:65.0%
Test Distance:12.177m [K=1.0000]
Remarks:

AAI Figure

Test:U:231.09V I:0.1561A P:34.925W PF:0.9682 Freq:49.99Hz UTHDi:0.00% ITHDi:0.00% KDisp:0 Lamp Flux:3855.36x1 lm		
NAME: 62001000501.35W.3K	TYPE: 62001000501.35W.3K	WEIGHT:
SPEC.: 62001000501.35W.3K	DIM.: 1438*65*42mm	SERIAL No.:
MFR.:	SUR.: 1432*57mm	Shielding Angle:



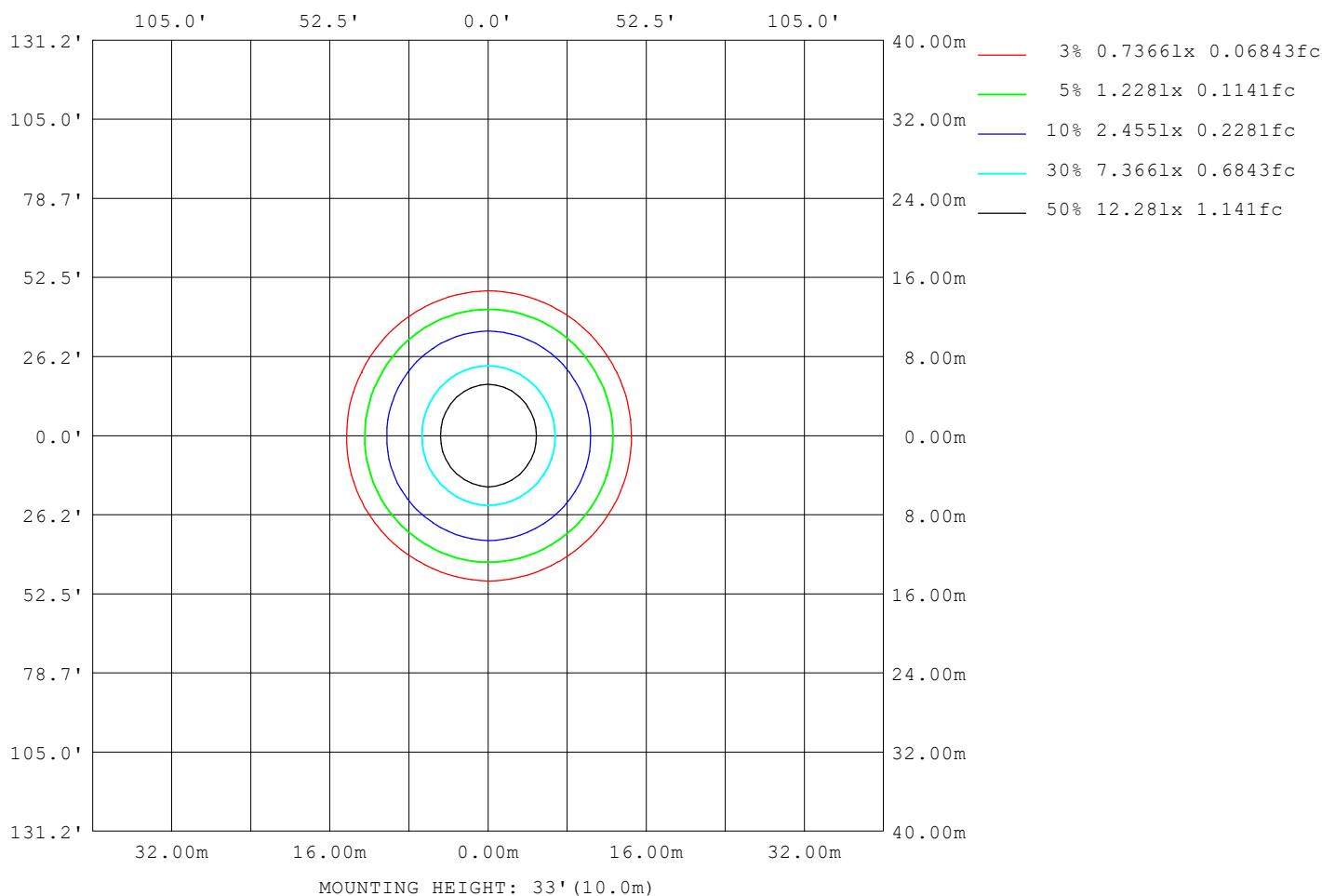
Note:The Curves indicate the illuminated area and the average illumination when the luminaire is at different distance.

C Range: 0 - 360DEG
C Interval: 30.0DEG
Test Speed: HIGH
Temperature:25.3℃
Operators:
Test Date:2026-04-21

γ Range: 0 - 180DEG
γ Interval: 1.0DEG
Test System:EVERFINE GO-3000H_V1 SYSTEM V2.00.471
Humidity:65.0%
Test Distance:12.177m [K=1.0000]
Remarks:

ISOLUX DIAGRAM

Test:U:231.09V I:0.1561A P:34.925W PF:0.9682 Freq:49.99Hz UTHDi:0.00% ITHDi:0.00% KDisp:0 Lamp Flux:3855.36x1 lm		
NAME: 62001000501.35W.3K	TYPE: 62001000501.35W.3K	WEIGHT:
SPEC.: 62001000501.35W.3K	DIM.: 1438*65*42mm	SERIAL No.:
MFR.:	SUR.: 1432*57mm	Shielding Angle:



C Range: 0 - 360DEG
C Interval: 30.0DEG
Test Speed: HIGH
Temperature:25.3℃
Operators:
Test Date:2026-04-21

γ Range: 0 - 180DEG
γ Interval: 1.0DEG
Test System:EVERFINE GO-3000H_V1 SYSTEM V2.00.471
Humidity:65.0%
Test Distance:12.177m [K=1.0000]
Remarks:

LED Avg.L Report

Test:U:231.09V I:0.1561A P:34.925W PF:0.9682 Freq:49.99Hz UTHDi:0.00% ITHDi:0.00% KDisp:0 Lamp Flux:3855.36x1 lm		
NAME: 62001000501.35W.3K	TYPE: 62001000501.35W.3K	WEIGHT:
SPEC.: 62001000501.35W.3K	DIM.: 1438*65*42mm	SERIAL No.:
MFR.:	SUR.: 1432*57mm	Shielding Angle:

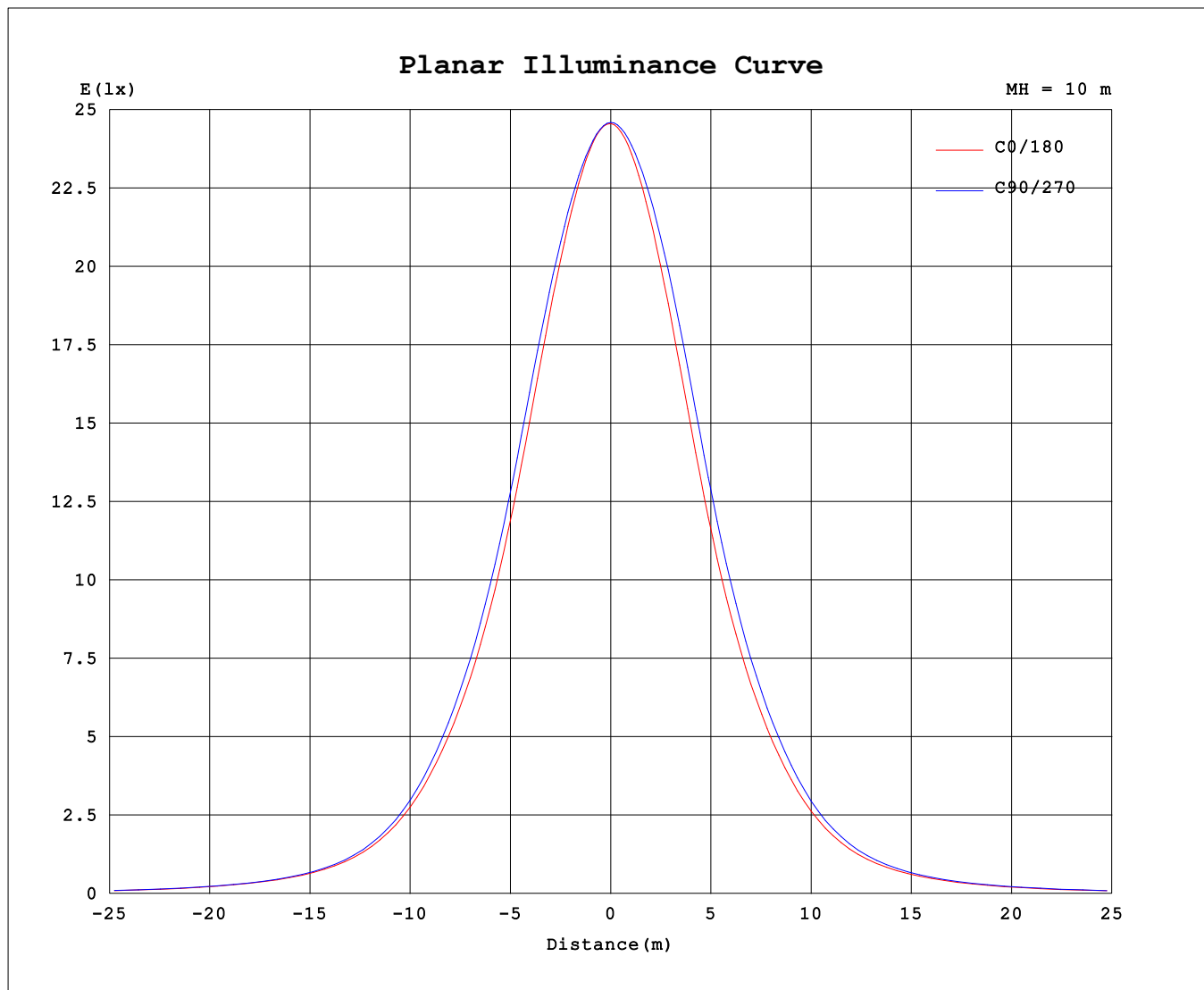
AvgL	cd/m2
L_0~180 (65) av	6407
L_0~180 (75) av	4804
L_0~180 (85) av	2725
L_90~270 (65) av	6733
L_90~270 (75) av	5066
L_90~270 (85) av	2573
L_45 (65) av	6497
L_45 (75) av	4854
L_45 (85) av	2707

Standard: GB/T 29293-2012

C Range: 0 - 360DEG
C Interval: 30.0DEG
Test Speed: HIGH
Temperature:25.3℃
Operators:
Test Date:2026-04-21

γ Range: 0 - 180DEG
γ Interval: 1.0DEG
Test System:EVERFINE GO-3000H_V1 SYSTEM V2.00.471
Humidity:65.0%
Test Distance:12.177m [K=1.0000]
Remarks:

Planar Illuminance Curve



C Range: 0 - 360DEG
C Interval: 30.0DEG
Test Speed: HIGH
Temperature: 25.3 °C
Operators:
Test Date: 2026-04-21

γ Range: 0 - 180DEG
 γ Interval: 1.0DEG
Test System: EVERFINE GO-3000H_V1 SYSTEM V2.00.471
Humidity: 65.0%
Test Distance: 12.177m [K=1.0000]
Remarks:

LUMINOUS DISTRIBUTION INTENSITY DATA

Test:U:231.09V I:0.1561A P:34.925W PF:0.9682 Freq:49.99Hz		
UTHDi:0.00% ITHDi:0.00% KDisp:0 Lamp Flux:3855.36x1 lm		
NAME: 62001000501.35W.3K	TYPE: 62001000501.35W.3K	WEIGHT:
SPEC.: 62001000501.35W.3K	DIM.: 1438*65*42mm	SERIAL No.:
MFR.:	SUR.: 1432*57mm	Shielding Angle:

Table--1

UNIT: cd

C (DEG) γ (DEG)	0	30	60	90	120	150	180	210	240	270	300	330						
0	2458	2458	2458	2458	2458	2458	2458	2458	2458	2458	2458	2458						
5	2427	2428	2429	2429	2424	2421	2416	2420	2429	2434	2433	2426						
10	2330	2338	2352	2358	2343	2327	2313	2327	2356	2370	2359	2336						
15	2184	2202	2236	2249	2219	2182	2160	2185	2241	2266	2242	2195						
20	1983	2012	2062	2087	2043	1986	1949	1983	2062	2103	2072	2003						
25	1743	1778	1836	1866	1813	1744	1705	1742	1829	1877	1842	1763						
30	1494	1528	1586	1616	1558	1493	1455	1489	1574	1620	1584	1510						
35	1255	1287	1335	1363	1307	1253	1217	1247	1320	1362	1328	1268						
40	1021	1048	1084	1108	1059	1015	984	1007	1065	1106	1077	1030						
45	781	801	823	842	798	771	745	761	802	835	814	785						
50	570	581	594	608	577	559	539	546	576	599	588	571						
55	413	418	424	432	414	403	390	394	410	427	420	411						
60	308	311	313	317	305	299	291	292	302	312	307	305						
65	230	232	232	236	227	222	214	215	221	230	228	227						
70	165	167	166	170	160	158	152	152	156	164	161	163						
75	108	109	108	110	102	101	96.3	96.8	98.3	105	104	106						
80	57.8	59.1	57.0	57.7	52.7	53.0	49.3	49.7	50.5	54.2	55.1	56.1						
85	21.7	22.3	20.5	19.2	18.2	18.9	17.3	17.2	17.2	17.5	19.6	20.6						
90	1.08	1.88	1.85	1.53	1.63	1.10	0.87	1.38	1.66	0.93	1.66	1.39						
95	0.70	0.96	0.92	0.76	0.88	0.97	0.98	1.07	1.06	0.90	1.17	1.05						
100	0.77	0.99	0.96	1.02	0.96	1.08	1.20	1.10	1.29	1.13	1.18	1.05						
105	0.99	1.19	1.15	1.37	1.26	1.32	1.47	1.39	1.62	1.48	1.47	1.23						
110	1.26	1.47	1.51	1.80	1.66	1.65	1.83	1.79	2.07	1.93	1.89	1.56						
115	1.66	1.87	1.99	2.29	2.14	2.07	2.29	2.26	2.58	2.49	2.39	2.03						
120	2.15	2.39	2.55	2.88	2.71	2.59	2.84	2.85	3.20	3.12	2.99	2.62						
125	2.74	3.00	3.16	3.53	3.34	3.20	3.48	3.53	3.88	3.81	3.66	3.27						
130	3.40	3.68	3.87	4.20	4.02	3.90	4.16	4.22	4.58	4.50	4.36	3.96						
135	4.11	4.38	4.56	4.93	4.76	4.61	4.93	5.01	5.34	5.25	5.11	4.73						
140	4.90	5.16	5.32	5.68	5.53	5.39	5.73	5.80	6.10	6.00	5.88	5.52						
145	5.70	5.96	6.09	6.43	6.29	6.20	6.54	6.59	6.87	6.76	6.65	6.31						
150	6.53	6.78	6.84	7.17	7.06	7.01	7.35	7.38	7.65	7.50	7.40	7.12						
155	7.36	7.58	7.58	7.91	7.80	7.79	8.14	8.11	8.35	8.21	8.15	7.91						
160	8.17	8.33	8.30	8.58	8.52	8.52	8.92	8.84	9.02	8.87	8.86	8.68						
165	8.95	9.05	8.98	9.23	9.17	9.23	9.64	9.45	9.59	9.43	9.46	9.34						
170	9.67	9.68	9.54	9.75	9.71	9.83	10.2	9.92	10.0	9.84	9.94	9.86						
175	10.1	10.1	9.91	10.1	10.0	10.1	10.4	10.2	10.1	10.1	10.1	10.1						
180	10.2	10.2	10.0	10.1	10.1	10.1	10.3	10.2	10.1	10.1	10.1	10.1						

C Range: 0 - 360DEG
C Interval: 30.0DEG
Test Speed: HIGH
Temperature:25.3℃
Operators:
Test Date:2026-04-21

γ Range: 0 - 180DEG
γ Interval: 1.0DEG
Test System:EVERFINE GO-3000H_V1 SYSTEM V2.00.471
Humidity:65.0%
Test Distance:12.177m [K=1.0000]
Remarks: