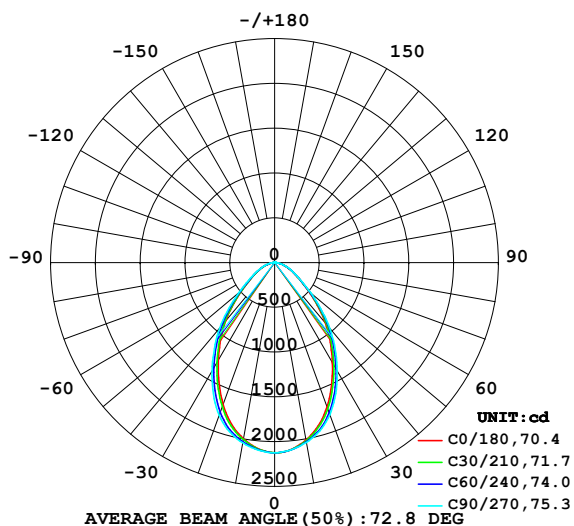


LUMINAIRE PHOTOMETRIC TEST REPORT

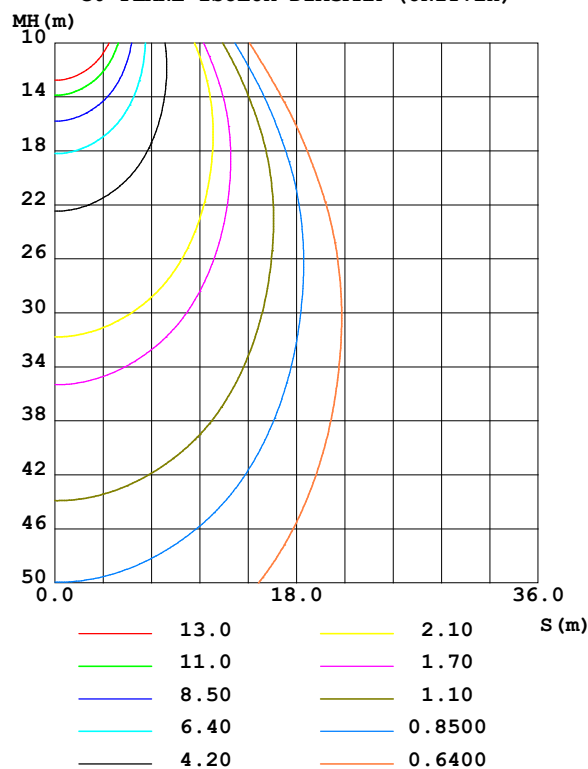
Test:U:231.09V I:0.1268A P:27.948W PF:0.9536 Freq:49.99Hz UTHDi:0.00% ITHDi:0.00% KDisp:0 Lamp Flux:3336.71x1 lm		
NAME: 62001000501.27W.4K	TYPE: 62001000501.27W.4K	WEIGHT:
SPEC.: 62001000501.27W.4K	DIM.: 1438*65*42mm	SERIAL No.:
MFR.:	SUR.: 1432*57mm	Shielding Angle:

DATA OF LAMP		PHOTOMETRIC DATA Eff: 119.39 lm/W			
MODEL	62001000501.27W.4K	I _{max} (cd)	2123	S/MH(C0/180)	0.96
NOMINAL POWER(W)		LOR(%)	100.0	S/MH(C90/270)	1.04
RATED VOLTAGE(V)	230	TOTAL FLUX(lm)	3336.7	η UP,DN(C0-180)	0.3,50.0
NOMINAL FLUX(lm)	3336.71	CIE CLASS	DIRECT	η UP,DN(C180-360)	0.3,49.4
LAMPS INSIDE	1	η up (%)	0.6	CIBSE SHR NOM	1.00
TEST VOLTAGE(V)	230	η down (%)	99.4	CIBSE SHR MAX	1.10

LUMINOUS INTENSITY DISTRIBUTION DIAGRAM



C0 PLANE ISOLUX DIAGRAM (UNIT:lx)



C Range: 0 - 360DEG
C Interval: 30.0DEG
Test Speed: HIGH
Temperature: 25.3 °C
Operators:
Test Date: 2026-04-21

γ Range: 0 - 180DEG
γ Interval: 1.0DEG
Test System: EVERFINE GO-3000H_V1 SYSTEM V2.00.471
Humidity: 65.0%
Test Distance: 12.177m [K=1.0000]
Remarks:

ZONAL FLUX DIAGRAM

ZONAL FLUX DIAGRAM:

γ	C0	C45	C90	C135	C180	C225	C270	C315	γ	Φ zone	Φ total	%lum, lamp
10	2013	2027	2040	2019	1998	2021	2045	2027	0- 10	197.7	197.7	5.93,5.93
20	1714	1762	1807	1743	1684	1745	1814	1759	10- 20	535.7	733.4	22,22
30	1292	1348	1399	1321	1258	1322	1399	1337	20- 30	710.9	1444	43.3,43.3
40	883.9	923.5	960.3	898.8	851.4	895.8	955.3	911.4	30- 40	698.4	2143	64.2,64.2
50	494.3	510.0	527.1	493.0	466.9	486.0	519.4	502.0	40- 50	534.1	2677	80.2,80.2
60	267.1	270.9	275.8	262.3	252.3	257.6	270.4	265.5	50- 60	326.4	3003	90,90
70	143.3	145.0	147.4	138.2	131.7	133.8	142.0	140.7	60- 70	196.3	3200	95.9,95.9
80	50.31	50.56	50.25	46.10	42.84	43.50	47.08	48.31	70- 80	96.22	3296	98.8,98.8
90	0.9509	1.634	1.302	1.194	0.7635	1.323	0.7913	1.351	80- 90	21.28	3317	99.4,99.4
100	0.6494	0.8650	0.8992	0.8872	1.037	1.044	0.9666	0.9961	90-100	0.9820	3318	99.4,99.4
110	1.094	1.304	1.582	1.445	1.607	1.667	1.671	1.496	100-110	1.235	3319	99.5,99.5
120	1.856	2.146	2.515	2.315	2.473	2.630	2.683	2.434	110-120	1.885	3321	99.5,99.5
130	2.961	3.283	3.697	3.463	3.669	3.852	3.933	3.640	120-130	2.639	3324	99.6,99.6
140	4.260	4.570	4.961	4.749	5.003	5.161	5.186	4.942	130-140	3.235	3327	99.7,99.7
150	5.660	5.919	6.247	6.119	6.405	6.516	6.504	6.313	140-150	3.459	3330	99.8,99.8
160	7.086	7.233	7.484	7.411	7.760	7.750	7.700	7.604	150-160	3.161	3334	99.9,99.9
170	8.406	8.354	8.497	8.480	8.898	8.672	8.552	8.617	160-170	2.269	3336	100,100
180	8.910	8.792	8.758	8.776	9.012	8.843	8.781	8.804	170-180	0.8316	3337	100,100
DEG	LUMINOUS INTENSITY:cd									UNIT:lm		

Conical surface Flux(90deg): 2438.2 lm

%lum = 73.1%

%lamp = 73.1%

Conical surface Flux(130deg): 3114.8 lm

%lum = 93.3%

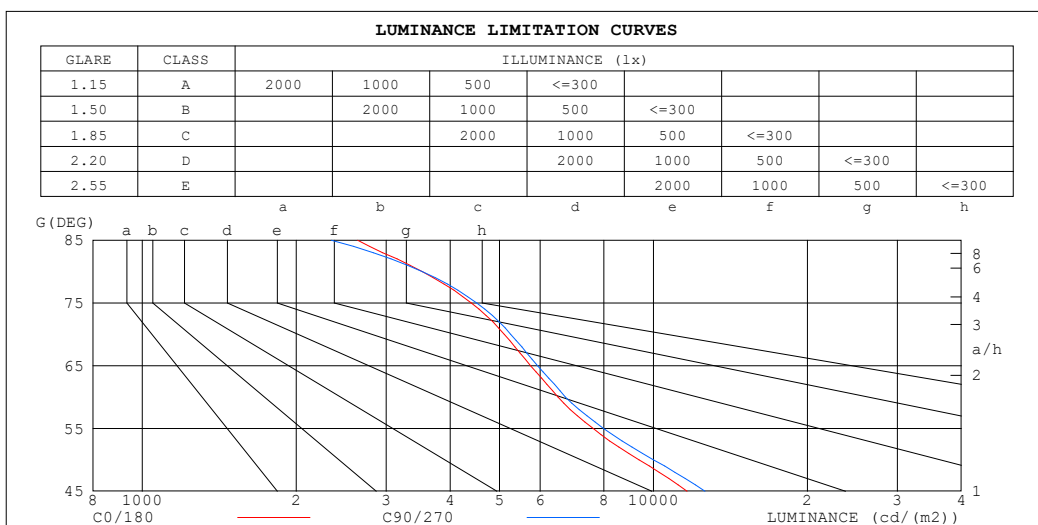
%lamp = 93.3%

C Range: 0 - 360DEG
C Interval: 30.0DEG
Test Speed: HIGH
Temperature:25.3℃
Operators:
Test Date:2026-04-21

γ Range: 0 - 180DEG
 γ Interval: 1.0DEG
Test System:EVERFINE GO-3000H_V1 SYSTEM V2.00.471
Humidity:65.0%
Test Distance:12.177m [K=1.0000]
Remarks:

LUMINANCE LIMITATION CURVES

Test:U:231.09V I:0.1268A P:27.948W PF:0.9536 Freq:49.99Hz UTHDi:0.00% ITHDi:0.00% KDisp:0 Lamp Flux:3336.71x1 lm		
NAME: 62001000501.27W.4K	TYPE: 62001000501.27W.4K	WEIGHT:
SPEC.: 62001000501.27W.4K	DIM.: 1438*65*42mm	SERIAL No.:
MFR.:	SUR.: 1432*57mm	Shielding Angle:



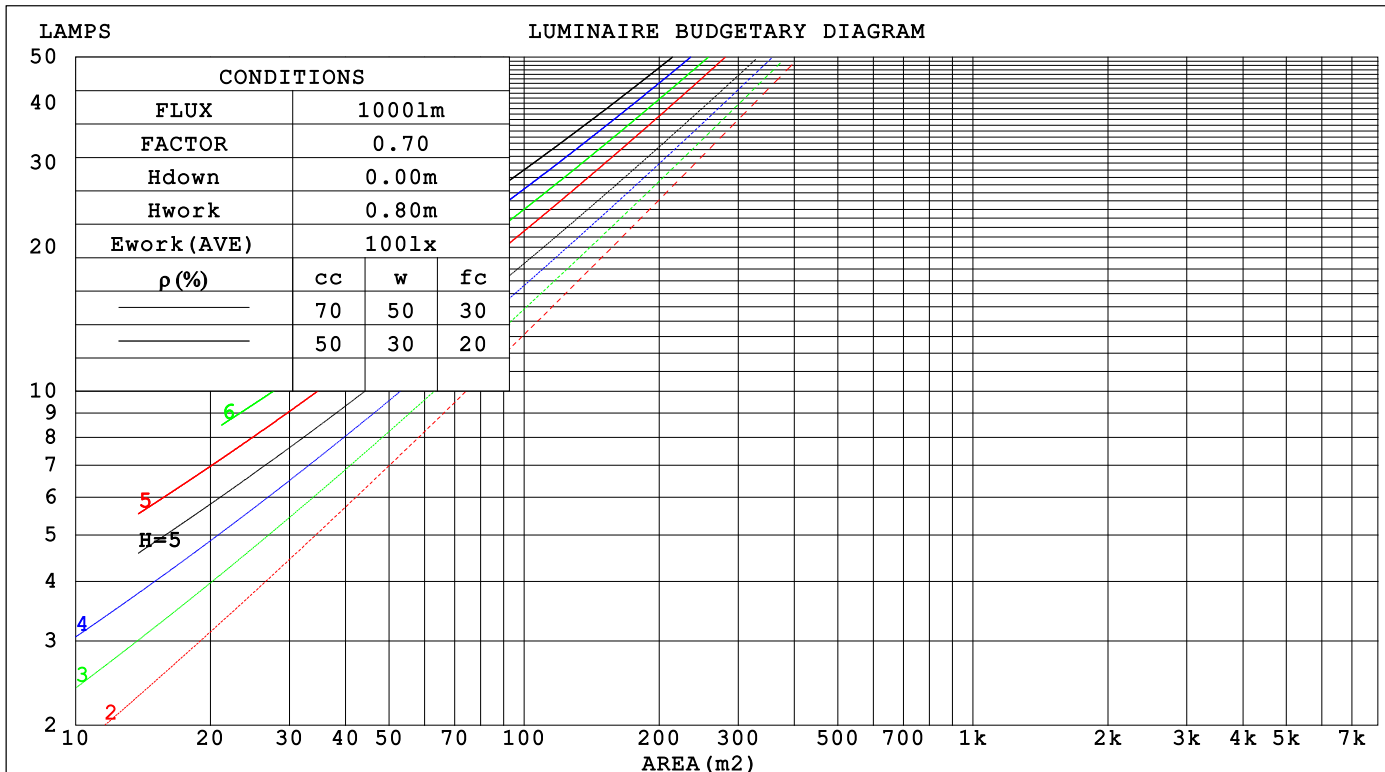
C Range: 0 - 360DEG
C Interval: 30.0DEG
Test Speed: HIGH
Temperature: 25.3°C
Operators:
Test Date: 2026-04-21

γ Range: 0 - 180DEG
γ Interval: 1.0DEG
Test System: EVERFINE GO-3000H_V1 SYSTEM V2.00.471
Humidity: 65.0%
Test Distance: 12.177m [K=1.0000]
Remarks:

CU AND LUMINAIRE BUDGETARY ESTIMATE DIAGRAM

Test:U:231.09V I:0.1268A P:27.948W PF:0.9536 Freq:49.99Hz			UTHDi:0.00% ITHDi:0.00% KDisp:0			Lamp Flux:3336.71x1 lm		
NAME: 62001000501.27W.4K			TYPE: 62001000501.27W.4K			WEIGHT:		
SPEC.: 62001000501.27W.4K			DIM.: 1438*65*42mm			SERIAL No.:		
MFR.:			SUR.: 1432*57mm			Shielding Angle:		

pcc	80%			70%			50%			30%			10%			0														
pw	50%	30%	10%	50%	30%	10%	50%	30%	10%	50%	30%	10%	50%	30%	10%	0														
pfc	20%			20%			20%			20%			20%			0														
RCR	RCR:Room Cavity Ratio															Coefficients of Utilization(CU)														
0.0	1.19	1.19	1.19	1.16	1.16	1.16	1.11	1.11	1.11	1.06	1.06	1.06	1.01	1.01	1.01	.99														
1.0	1.07	1.04	1.01	1.05	1.02	.99	1.01	.98	.96	.97	.95	.93	.93	.92	.90	.88														
2.0	.96	.91	.86	.95	.89	.85	.91	.87	.83	.88	.84	.81	.85	.82	.79	.77														
3.0	.87	.80	.75	.85	.79	.74	.83	.77	.73	.80	.75	.72	.77	.74	.70	.68														
4.0	.79	.72	.66	.78	.71	.66	.75	.69	.65	.73	.68	.64	.71	.66	.63	.61														
5.0	.72	.64	.59	.71	.64	.58	.69	.63	.58	.67	.61	.57	.65	.60	.57	.55														
6.0	.66	.58	.53	.65	.58	.53	.63	.57	.52	.62	.56	.52	.60	.55	.51	.49														
7.0	.61	.53	.48	.60	.53	.48	.58	.52	.47	.57	.51	.47	.56	.51	.47	.45														
8.0	.56	.49	.44	.55	.48	.43	.54	.48	.43	.53	.47	.43	.52	.47	.43	.41														
9.0	.52	.45	.40	.52	.45	.40	.50	.44	.40	.49	.44	.39	.48	.43	.39	.38														
10.0	.49	.42	.37	.48	.41	.37	.47	.41	.37	.46	.40	.36	.45	.40	.36	.35														



C Range: 0 - 360DEG
C Interval: 30.0DEG
Test Speed: HIGH
Temperature:25.3℃
Operators:
Test Date:2026-04-21

γ Range: 0 - 180DEG
γ Interval: 1.0DEG
Test System:EVERFINE GO-3000H_V1 SYSTEM V2.00.471
Humidity:65.0%
Test Distance:12.177m [K=1.0000]
Remarks:

WEC AND CCEC

Test:U:231.09V I:0.1268A P:27.948W PF:0.9536 Freq:49.99Hz		
UTHDi:0.00% ITHDi:0.00% KDisp:0 Lamp Flux:3336.71x1 lm		
NAME: 62001000501.27W.4K	TYPE: 62001000501.27W.4K	WEIGHT:
SPEC.: 62001000501.27W.4K	DIM.: 1438*65*42mm	SERIAL No.:
MFR.:	SUR.: 1432*57mm	Shielding Angle:

pcc	80%			70%			50%			30%			10%			0	
pw	50%	30%	10%	50%	30%	10%	50%	30%	10%	50%	30%	10%	50%	30%	10%	0	
pfc	20%			20%			20%			20%			20%			0	
RCR	RCR:Room Cavity Ratio						Wall Exitance Coefficients(WEC)										
0.0																	
1.0	.243	.138	.044	.236	.135	.043	.223	.128	.041	.211	.122	.039	.199	.116	.037		
2.0	.233	.128	.039	.227	.125	.039	.216	.120	.037	.205	.115	.036	.195	.111	.035		
3.0	.220	.117	.035	.215	.115	.035	.205	.111	.034	.196	.107	.033	.187	.103	.032		
4.0	.207	.107	.032	.202	.106	.031	.193	.102	.031	.185	.099	.030	.177	.096	.029		
5.0	.194	.099	.029	.190	.098	.028	.182	.095	.028	.175	.092	.027	.168	.090	.027		
6.0	.183	.092	.026	.179	.090	.026	.172	.088	.026	.165	.086	.025	.159	.084	.025		
7.0	.172	.085	.024	.169	.084	.024	.163	.082	.024	.157	.080	.023	.151	.079	.023		
8.0	.162	.079	.022	.159	.079	.022	.154	.077	.022	.149	.075	.022	.144	.074	.021		
9.0	.154	.074	.021	.151	.074	.021	.146	.072	.020	.141	.071	.020	.137	.069	.020		
10.0	.146	.070	.019	.143	.069	.019	.139	.068	.019	.134	.067	.019	.130	.066	.019		

pcc	80%			70%			50%			30%			10%			0	
pw	50%	30%	10%	50%	30%	10%	50%	30%	10%	50%	30%	10%	50%	30%	10%	0	
pfc	20%			20%			20%			20%			20%			0	
RCR	RCR:Room Cavity Ratio						Ceiling Cavity Exitance Coefficients (CCEC)										
0.0	.195	.195	.195	.167	.167	.167	.114	.114	.114	.065	.065	.065	.021	.021	.021		
1.0	.180	.161	.144	.154	.138	.124	.105	.095	.086	.061	.055	.050	.019	.018	.016		
2.0	.169	.137	.110	.145	.118	.095	.099	.081	.066	.057	.047	.039	.018	.015	.013		
3.0	.159	.119	.086	.137	.102	.075	.094	.071	.052	.054	.041	.031	.017	.013	.010		
4.0	.151	.105	.069	.130	.090	.060	.089	.063	.042	.052	.037	.025	.017	.012	.008		
5.0	.143	.094	.057	.123	.081	.050	.085	.057	.035	.049	.033	.021	.016	.011	.007		
6.0	.136	.085	.048	.117	.074	.042	.081	.052	.030	.047	.030	.018	.015	.010	.006		
7.0	.130	.078	.042	.112	.068	.036	.077	.047	.026	.045	.028	.015	.014	.009	.005		
8.0	.124	.072	.036	.107	.062	.032	.074	.044	.022	.043	.026	.013	.014	.008	.004		
9.0	.119	.067	.032	.102	.058	.028	.071	.041	.020	.041	.024	.012	.013	.008	.004		
10.0	.113	.063	.029	.098	.054	.025	.068	.038	.018	.040	.023	.011	.013	.007	.004		

C Range: 0 - 360DEG
C Interval: 30.0DEG
Test Speed: HIGH
Temperature:25.3℃
Operators:
Test Date:2026-04-21

γ Range: 0 - 180DEG
γ Interval: 1.0DEG
Test System:EVERFINE GO-3000H_V1 SYSTEM V2.00.471
Humidity:65.0%
Test Distance:12.177m [K=1.0000]
Remarks:

UGR(Unified Glare Rating) Table

Test:U:231.09V I:0.1268A P:27.948W PF:0.9536 Freq:49.99Hz UTHDi:0.00% ITHDi:0.00% KDisp:0 Lamp Flux:3336.71x1 lm										
NAME: 62001000501.27W.4K					TYPE: 62001000501.27W.4K			WEIGHT:		
SPEC.: 62001000501.27W.4K					DIM.: 1438*65*42mm			SERIAL No.:		
MFR.:					SUR.: 1432*57mm			Shielding Angle:		
ceiling/cavity	0.7	0.7	0.5	0.5	0.3	0.7	0.7	0.5	0.5	0.3
walls	0.5	0.3	0.5	0.3	0.3	0.5	0.3	0.5	0.3	0.3
working plane	0.2	0.2	0.2	0.2	0.2	0.2	0.2	0.2	0.2	0.2
Room dimensions	Viewed crosswise					Viewed endwise				
x = 2H y = 2H	19.0	20.2	19.2	20.4	20.6	19.2	20.5	19.5	20.7	20.9
3H	19.7	20.9	20.0	21.1	21.3	19.9	21.1	20.2	21.3	21.6
4H	20.0	21.1	20.3	21.3	21.6	20.2	21.3	20.5	21.6	21.8
6H	20.2	21.2	20.5	21.5	21.7	20.4	21.4	20.7	21.7	21.9
8H	20.2	21.2	20.5	21.5	21.8	20.4	21.4	20.7	21.7	21.9
12H	20.2	21.2	20.5	21.4	21.7	20.4	21.3	20.7	21.6	21.9
4H 2H	19.3	20.4	19.6	20.6	20.9	19.5	20.6	19.8	20.8	21.1
3H	20.2	21.1	20.5	21.4	21.7	20.3	21.3	20.7	21.6	21.9
4H	20.6	21.4	20.9	21.8	22.1	20.7	21.6	21.1	21.9	22.3
6H	20.8	21.6	21.2	22.0	22.3	21.0	21.7	21.4	22.1	22.5
8H	20.9	21.6	21.3	22.0	22.4	21.0	21.7	21.4	22.1	22.5
12H	20.9	21.6	21.4	22.0	22.4	21.0	21.7	21.5	22.1	22.5
8H 4H	20.7	21.4	21.1	21.8	22.2	20.8	21.5	21.2	21.9	22.3
6H	21.0	21.6	21.5	22.0	22.5	21.2	21.7	21.6	22.2	22.6
8H	21.2	21.7	21.6	22.1	22.6	21.3	21.8	21.7	22.2	22.7
12H	21.2	21.7	21.7	22.1	22.6	21.3	21.7	21.8	22.2	22.7
12H 4H	20.7	21.3	21.1	21.7	22.1	20.8	21.5	21.2	21.8	22.3
6H	21.0	21.6	21.5	22.0	22.5	21.2	21.7	21.6	22.1	22.6
8H	21.2	21.6	21.7	22.1	22.6	21.3	21.7	21.8	22.2	22.7
Variations with the observer position at spacings(CIE Pub.117):										
S = 1.0H	+ 0.6 / - 0.7					+ 0.6 / - 0.7				
1.5H	+ 0.4 / - 0.5					+ 0.5 / - 0.5				
2.0H	+ 1.2 / - 0.8					+ 1.3 / - 0.8				

CIE Pub.117, 3337 lm Total Lamp Luminous Flux Corrected (8log(F/F0) = 4.2)
Area: 0.082 m2

C Range: 0 - 360DEG
C Interval: 30.0DEG
Test Speed: HIGH
Temperature:25.3℃
Operators:
Test Date:2026-04-21

γ Range: 0 - 180DEG
γ Interval: 1.0DEG
Test System:EVERFINE GO-3000H_V1 SYSTEM V2.00.471
Humidity:65.0%
Test Distance:12.177m [K=1.0000]
Remarks:

UTILIZATION FACTORS TABLE

Test:U:231.09V I:0.1268A P:27.948W PF:0.9536 Freq:49.99Hz		
UTHDi:0.00% ITHDi:0.00% KDisp:0 Lamp Flux:3336.71x1 lm		
NAME: 62001000501.27W.4K	TYPE: 62001000501.27W.4K	WEIGHT:
SPEC.: 62001000501.27W.4K	DIM.: 1438*65*42mm	SERIAL No.:
MFR.:	SUR.: 1432*57mm	Shielding Angle:

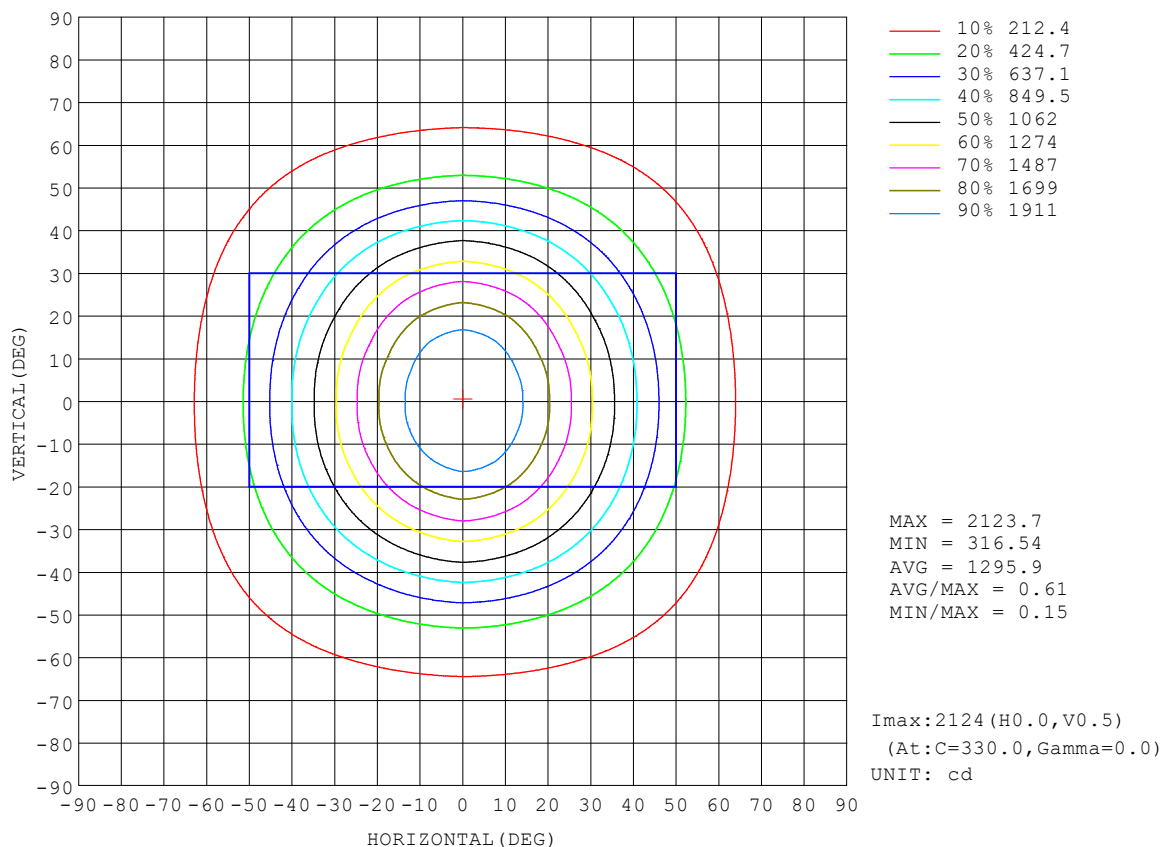
REFLECTANCE										
Ceiling	0.8	0.8	0.8	0.7	0.7	0.7	0.5	0.5	0.5	0
Walls	0.7	0.5	0.3	0.7	0.5	0.3	0.7	0.5	0.3	0
Working plane	0.2	0.2	0.2	0.2	0.2	0.2	0.2	0.2	0.2	0
ROOM INDEX	UTILIZATION FACTORS (PERCENT) $k(RI) \times RCR = 5$									
$k = 0.60$	69	60	54	69	59	54	67	59	54	48
0.80	79	69	64	78	69	63	76	68	63	57
1.00	86	77	71	85	77	71	83	77	71	65
1.25	92	84	78	91	83	78	88	82	77	71
1.50	96	88	83	95	88	83	92	86	81	75
2.00	101	95	90	100	94	89	96	91	87	81
2.50	104	98	94	102	97	93	99	94	91	83
3.00	107	101	97	105	100	96	101	97	94	86
4.00	110	105	102	107	104	100	103	100	98	89
5.00	111	108	105	109	106	103	105	102	100	91
ROOM INDEX	UF (total)									Direct
According to DIN EN 13032-2 2004			Suspended					SHRNOM = 1.25		

C Range: 0 - 360DEG
C Interval: 30.0DEG
Test Speed: HIGH
Temperature: 25.3°C
Operators:
Test Date: 2026-04-21

γ Range: 0 - 180DEG
γ Interval: 1.0DEG
Test System: EVERFINE GO-3000H_V1 SYSTEM V2.00.471
Humidity: 65.0%
Test Distance: 12.177m [K=1.0000]
Remarks:

ISOCANDELA DIAGRAM

Test:U:231.09V I:0.1268A P:27.948W PF:0.9536 Freq:49.99Hz UTHDi:0.00% ITHDi:0.00% KDisp:0 Lamp Flux:3336.71x1 lm		
NAME: 62001000501.27W.4K	TYPE: 62001000501.27W.4K	WEIGHT:
SPEC.: 62001000501.27W.4K	DIM.: 1438*65*42mm	SERIAL No.:
MFR.:	SUR.: 1432*57mm	Shielding Angle:

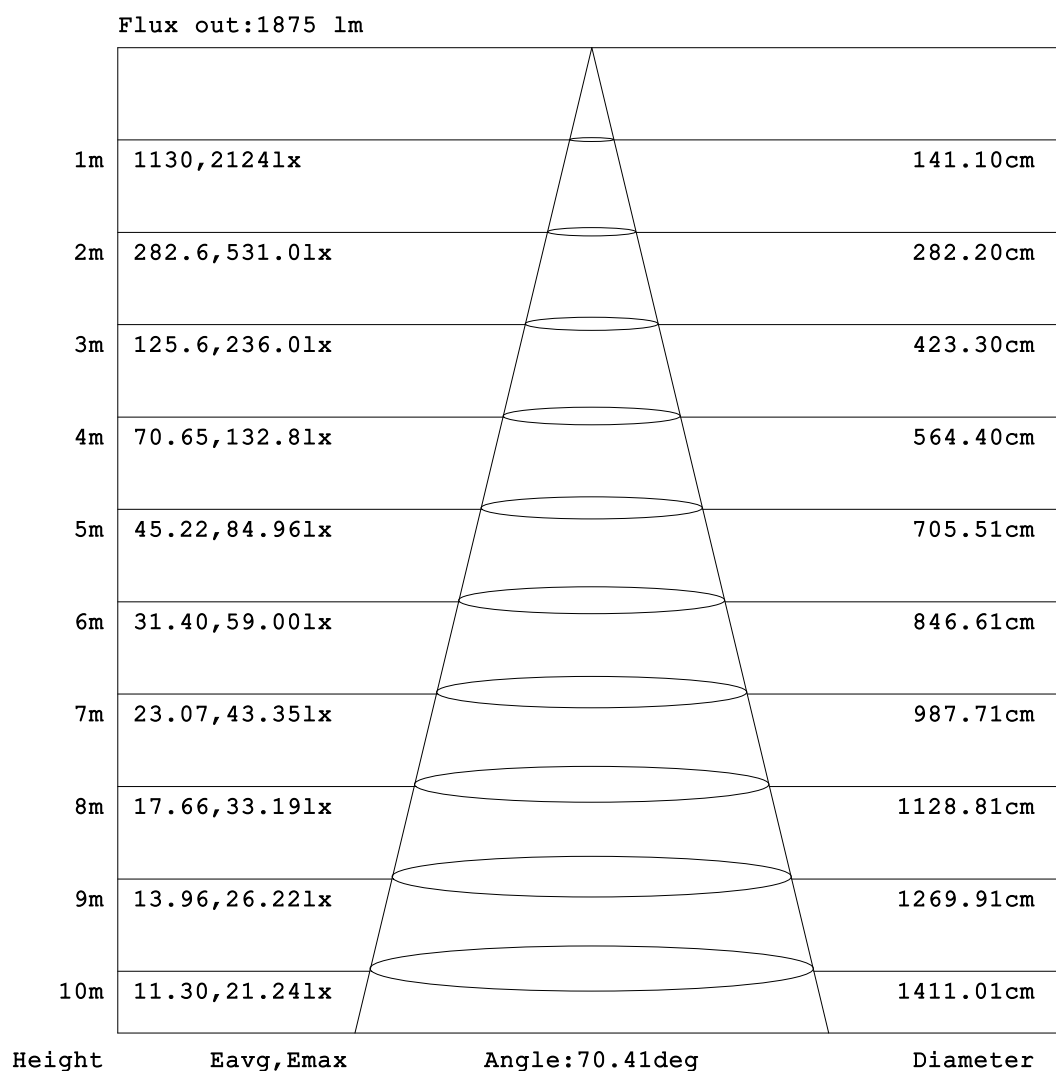


C Range: 0 - 360DEG
C Interval: 30.0DEG
Test Speed: HIGH
Temperature:25.3℃
Operators:
Test Date:2026-04-21

γ Range: 0 - 180DEG
γ Interval: 1.0DEG
Test System:EVERFINE GO-3000H_V1 SYSTEM V2.00.471
Humidity:65.0%
Test Distance:12.177m [K=1.0000]
Remarks:

AAI Figure

Test:U:231.09V I:0.1268A P:27.948W PF:0.9536 Freq:49.99Hz UTHDi:0.00% ITHDi:0.00% KDisp:0 Lamp Flux:3336.71x1 lm		
NAME: 62001000501.27W.4K	TYPE: 62001000501.27W.4K	WEIGHT:
SPEC.: 62001000501.27W.4K	DIM.: 1438*65*42mm	SERIAL No.:
MFR.:	SUR.: 1432*57mm	Shielding Angle:



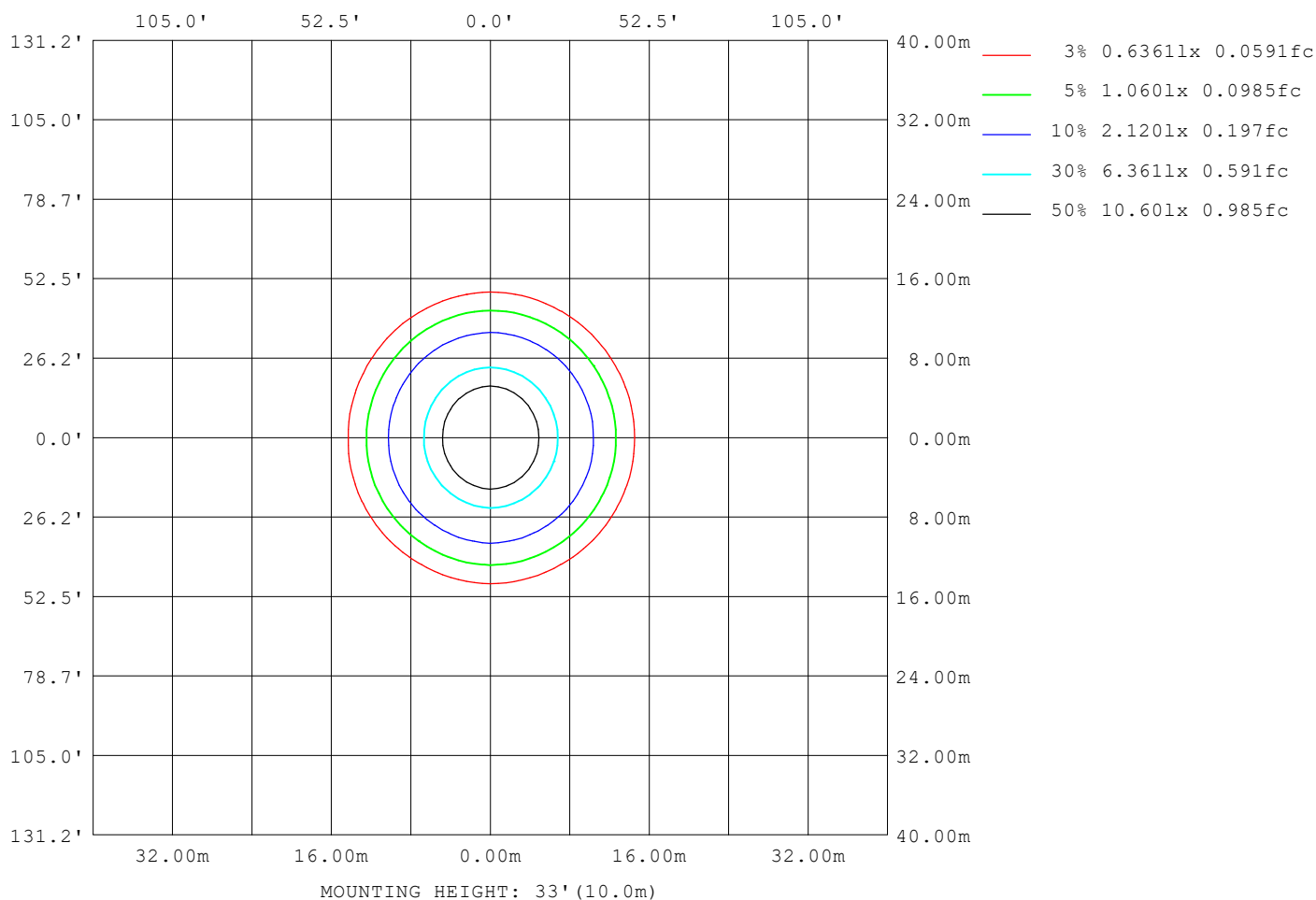
Note:The Curves indicate the illuminated area and the average illumination when the luminaire is at different distance.

C Range: 0 - 360DEG
C Interval: 30.0DEG
Test Speed: HIGH
Temperature:25.3℃
Operators:
Test Date:2026-04-21

γ Range: 0 - 180DEG
γ Interval: 1.0DEG
Test System:EVERFINE GO-3000H_V1 SYSTEM V2.00.471
Humidity:65.0%
Test Distance:12.177m [K=1.0000]
Remarks:

ISOLUX DIAGRAM

Test:U:231.09V I:0.1268A P:27.948W PF:0.9536 Freq:49.99Hz UTHDi:0.00% ITHDi:0.00% KDisp:0 Lamp Flux:3336.71x1 lm		
NAME: 62001000501.27W.4K	TYPE: 62001000501.27W.4K	WEIGHT:
SPEC.: 62001000501.27W.4K	DIM.: 1438*65*42mm	SERIAL No.:
MFR.:	SUR.: 1432*57mm	Shielding Angle:



C Range: 0 - 360DEG
C Interval: 30.0DEG
Test Speed: HIGH
Temperature:25.3℃
Operators:
Test Date:2026-04-21

γ Range: 0 - 180DEG
γ Interval: 1.0DEG
Test System:EVERFINE GO-3000H_V1 SYSTEM V2.00.471
Humidity:65.0%
Test Distance:12.177m [K=1.0000]
Remarks:

LED Avg.L Report

Test:U:231.09V I:0.1268A P:27.948W PF:0.9536 Freq:49.99Hz UTHDi:0.00% ITHDi:0.00% KDisp:0 Lamp Flux:3336.71x1 lm		
NAME: 62001000501.27W.4K	TYPE: 62001000501.27W.4K	WEIGHT:
SPEC.: 62001000501.27W.4K	DIM.: 1438*65*42mm	SERIAL No.:
MFR.:	SUR.: 1432*57mm	Shielding Angle:

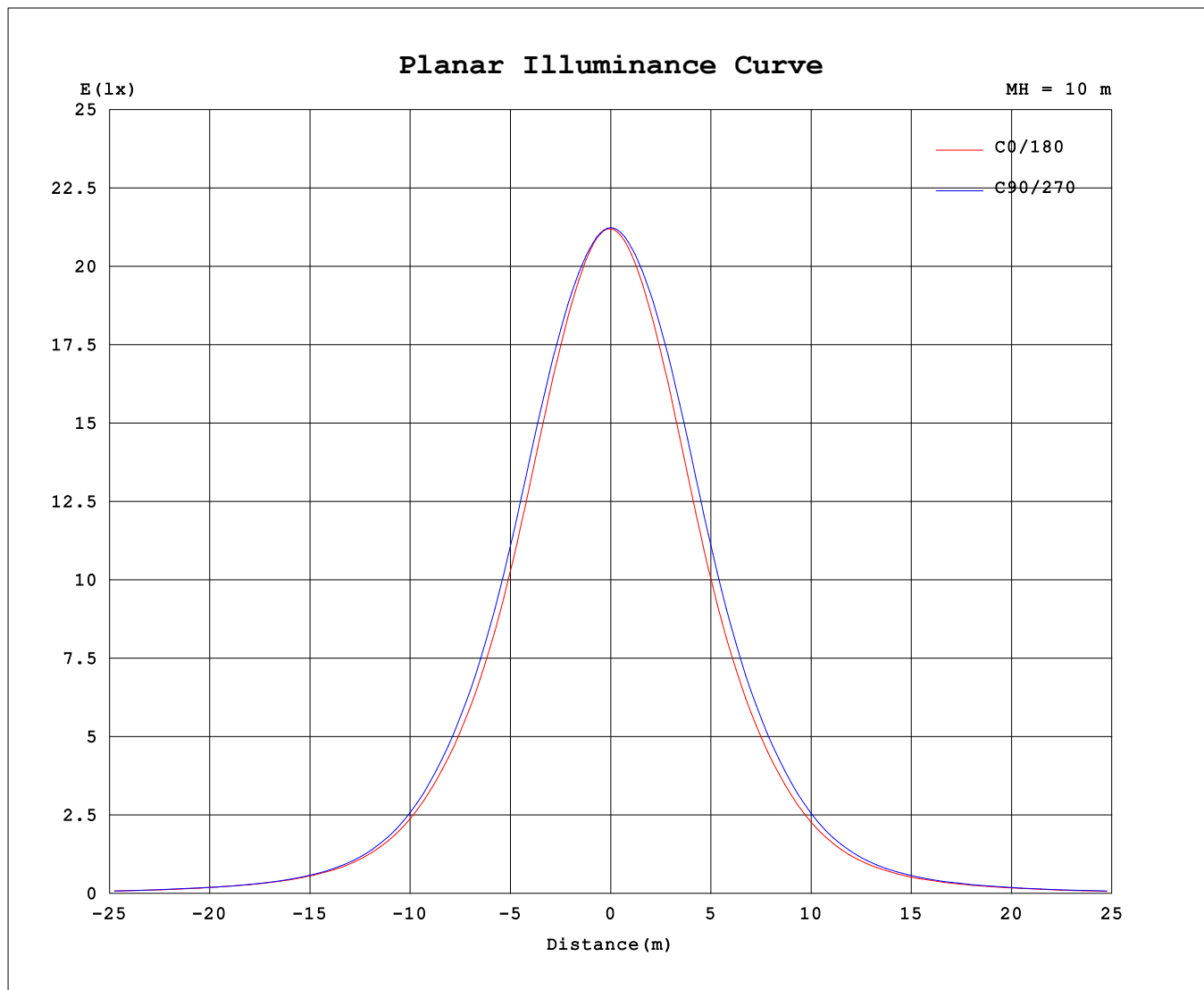
AvgL	cd/m2
L_0~180 (65) av	5562
L_0~180 (75) av	4171
L_0~180 (85) av	2371
L_90~270 (65) av	5851
L_90~270 (75) av	4406
L_90~270 (85) av	2242
L_45 (65) av	5644
L_45 (75) av	4219
L_45 (85) av	2359

Standard: GB/T 29293-2012

C Range: 0 - 360DEG
C Interval: 30.0DEG
Test Speed: HIGH
Temperature:25.3℃
Operators:
Test Date:2026-04-21

γ Range: 0 - 180DEG
γ Interval: 1.0DEG
Test System:EVERFINE GO-3000H_V1 SYSTEM V2.00.471
Humidity:65.0%
Test Distance:12.177m [K=1.0000]
Remarks:

Planar Illuminance Curve



C Range: 0 - 360DEG
C Interval: 30.0DEG
Test Speed: HIGH
Temperature: 25.3 °C
Operators:
Test Date: 2026-04-21

γ Range: 0 - 180DEG
 γ Interval: 1.0DEG
Test System: EVERFINE GO-3000H_V1 SYSTEM V2.00.471
Humidity: 65.0%
Test Distance: 12.177m [K=1.0000]
Remarks:

LUMINOUS DISTRIBUTION INTENSITY DATA

Test:U:231.09V I:0.1268A P:27.948W PF:0.9536 Freq:49.99Hz		
UTHDi:0.00% ITHDi:0.00% KDisp:0 Lamp Flux:3336.71x1 lm		
NAME: 62001000501.27W.4K	TYPE: 62001000501.27W.4K	WEIGHT:
SPEC.: 62001000501.27W.4K	DIM.: 1438*65*42mm	SERIAL No.:
MFR.:	SUR.: 1432*57mm	Shielding Angle:

Table--1

UNIT: cd

C (DEG) γ (DEG)	0	30	60	90	120	150	180	210	240	270	300	330							
0	2123	2123	2123	2123	2123	2123	2123	2123	2123	2123	2123	2123							
5	2096	2097	2098	2099	2095	2091	2087	2090	2097	2101	2100	2095							
10	2013	2020	2034	2040	2026	2011	1998	2009	2033	2045	2037	2018							
15	1887	1903	1935	1947	1920	1886	1866	1886	1934	1955	1935	1896							
20	1714	1740	1785	1807	1769	1717	1684	1712	1779	1814	1787	1730							
25	1507	1538	1589	1615	1570	1509	1474	1505	1578	1619	1590	1524							
30	1292	1322	1373	1399	1350	1292	1258	1287	1358	1399	1367	1306							
35	1086	1113	1156	1180	1133	1084	1054	1078	1139	1176	1147	1097							
40	884	907	940	960	918	880	851	871	920	955	931	892							
45	676	695	713	731	693	669	645	658	695	723	705	680							
50	494	504	516	527	501	485	467	473	499	519	509	495							
55	359	363	368	375	361	350	339	342	356	370	364	358							
60	267	270	272	276	265	259	252	254	261	270	266	265							
65	200	201	202	205	197	193	186	187	192	200	198	198							
70	143	145	145	147	139	137	132	132	135	142	140	141							
75	93.5	95.0	93.7	95.7	89.0	88.1	83.6	84.2	85.3	91.3	90.5	91.8							
80	50.3	51.4	49.7	50.3	46.1	46.1	42.8	43.2	43.8	47.1	47.7	48.9							
85	18.9	19.4	17.9	16.7	15.9	16.5	15.0	14.9	14.9	15.3	17.0	18.0							
90	0.95	1.62	1.65	1.30	1.43	0.96	0.76	1.21	1.43	0.79	1.44	1.26							
95	0.77	0.82	0.83	0.67	0.79	0.81	0.89	0.95	0.94	0.78	1.03	0.91							
100	0.65	0.87	0.86	0.90	0.83	0.94	1.04	0.97	1.12	0.97	1.05	0.95							
105	0.84	1.04	0.99	1.21	1.09	1.17	1.28	1.20	1.41	1.26	1.29	1.07							
110	1.09	1.29	1.32	1.58	1.43	1.46	1.61	1.54	1.80	1.67	1.64	1.35							
115	1.43	1.63	1.73	2.00	1.85	1.82	1.99	1.97	2.26	2.15	2.09	1.75							
120	1.86	2.09	2.21	2.52	2.35	2.28	2.47	2.47	2.79	2.68	2.61	2.26							
125	2.37	2.61	2.75	3.09	2.91	2.79	3.04	3.05	3.38	3.29	3.20	2.82							
130	2.96	3.21	3.35	3.70	3.51	3.41	3.67	3.70	4.00	3.93	3.82	3.46							
135	3.61	3.86	3.97	4.30	4.13	4.05	4.31	4.34	4.63	4.54	4.45	4.08							
140	4.26	4.51	4.63	4.96	4.80	4.70	5.00	5.02	5.30	5.19	5.11	4.78							
145	4.94	5.20	5.28	5.61	5.46	5.41	5.70	5.72	5.97	5.86	5.78	5.48							
150	5.66	5.90	5.94	6.25	6.13	6.11	6.40	6.39	6.64	6.50	6.44	6.19							
155	6.39	6.59	6.59	6.88	6.79	6.79	7.08	7.03	7.27	7.12	7.08	6.86							
160	7.09	7.25	7.21	7.48	7.39	7.43	7.76	7.66	7.84	7.70	7.69	7.52							
165	7.77	7.87	7.79	8.03	7.96	8.03	8.39	8.22	8.34	8.19	8.24	8.11							
170	8.41	8.43	8.28	8.50	8.42	8.54	8.90	8.63	8.71	8.55	8.66	8.58							
175	8.82	8.77	8.62	8.71	8.72	8.73	9.01	8.85	8.82	8.76	8.76	8.83							
180	8.91	8.86	8.72	8.76	8.77	8.78	9.01	8.85	8.84	8.78	8.78	8.83							

C Range: 0 - 360DEG
C Interval: 30.0DEG
Test Speed: HIGH
Temperature:25.3℃
Operators:
Test Date:2026-04-21

γ Range: 0 - 180DEG
γ Interval: 1.0DEG
Test System:EVERFINE GO-3000H_V1 SYSTEM V2.00.471
Humidity:65.0%
Test Distance:12.177m [K=1.0000]
Remarks: