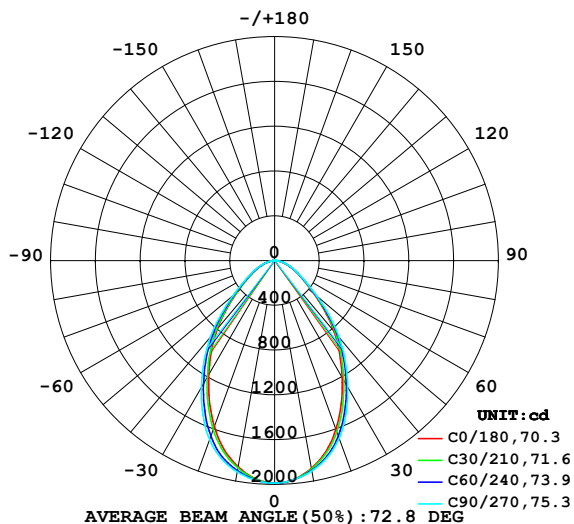


LUMINAIRE PHOTOMETRIC TEST REPORT

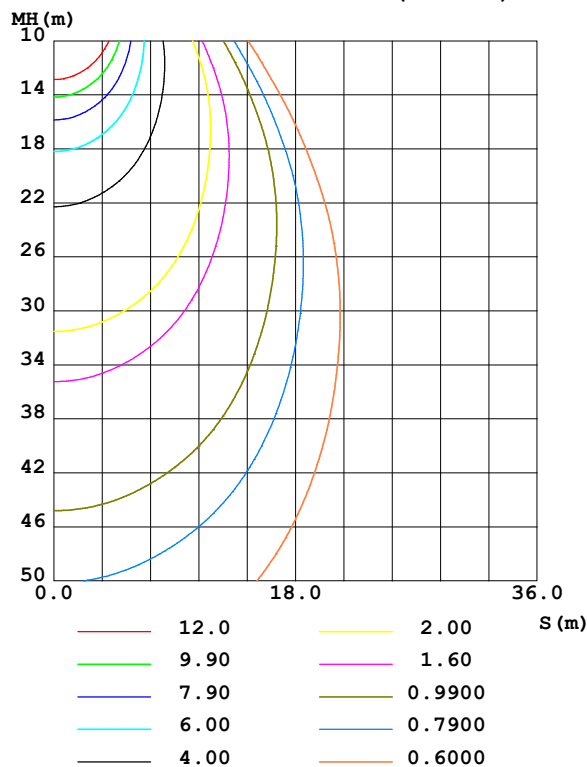
Test:U:231.08V I:0.1268A P:27.949W PF:0.9537 Freq:49.99Hz UTHDi:0.00% ITHDi:0.00% KDisp:0 Lamp Flux:3119.31x1 lm		
NAME: 62001000501.27W.3K	TYPE: 62001000501.27W.3K	WEIGHT:
SPEC.: 62001000501.27W.3K	DIM.: 1438*65*42mm	SERIAL No.:
MFR.:	SUR.: 1432*57mm	Shielding Angle:

DATA OF LAMP		PHOTOMETRIC DATA Eff: 111.61 lm/W			
MODEL	62001000501.27W.3K	I _{max} (cd)	1988	S/MH(C0/180)	0.96
NOMINAL POWER(W)		LOR(%)	100.0	S/MH(C90/270)	1.04
RATED VOLTAGE(V)	230	TOTAL FLUX(lm)	3119.3	η UP,DN(C0-180)	0.3,50.0
NOMINAL FLUX(lm)	3119.31	CIE CLASS	DIRECT	η UP,DN(C180-360)	0.3,49.5
LAMPS INSIDE	1	η up (%)	0.6	CIBSE SHR NOM	1.00
TEST VOLTAGE(V)	230	η down (%)	99.4	CIBSE SHR MAX	1.10

LUMINOUS INTENSITY DISTRIBUTION DIAGRAM



C0 PLANE ISOLUX DIAGRAM (UNIT:lx)



C Range: 0 - 360DEG
C Interval: 30.0DEG
Test Speed: HIGH
Temperature:25.3℃
Operators:
Test Date:2026-04-21

γ Range: 0 - 180DEG
γ Interval: 1.0DEG
Test System:EVERFINE GO-3000H_V1 SYSTEM V2.00.471
Humidity:65.0%
Test Distance:12.177m [K=1.0000]
Remarks:

ZONAL FLUX DIAGRAM

ZONAL FLUX DIAGRAM:

γ	C0	C45	C90	C135	C180	C225	C270	C315	γ	Φ zone	Φ total	%lum, lamp
10	1884	1897	1908	1889	1872	1894	1917	1899	0- 10	185.2	185.2	5.94,5.94
20	1604	1647	1689	1629	1578	1637	1702	1648	10- 20	501.6	686.8	22,22
30	1207	1259	1307	1234	1177	1239	1311	1251	20- 30	665.3	1352	43.3,43.3
40	825.5	862.1	897.2	839.0	796.7	838.7	894.5	852.6	30- 40	653.2	2005	64.3,64.3
50	461.1	475.6	491.8	459.7	436.1	454.2	485.3	468.7	40- 50	499.0	2504	80.3,80.3
60	248.9	252.3	257.0	244.4	235.4	240.3	252.1	247.5	50- 60	304.5	2809	90,90
70	133.5	134.9	137.2	128.7	122.8	124.8	132.4	131.1	60- 70	182.9	2992	95.9,95.9
80	46.83	46.93	46.70	42.82	39.93	40.60	43.86	45.00	70- 80	89.59	3081	98.8,98.8
90	0.8836	1.523	1.213	1.088	0.7178	1.219	0.7452	1.215	80- 90	19.78	3101	99.4,99.4
100	0.5922	0.7750	0.8532	0.8131	0.9801	0.9758	0.8867	0.9397	90-100	0.9080	3102	99.4,99.4
110	1.014	1.207	1.468	1.337	1.493	1.548	1.557	1.388	100-110	1.146	3103	99.5,99.5
120	1.720	1.987	2.334	2.133	2.291	2.448	2.501	2.264	110-120	1.748	3105	99.5,99.5
130	2.746	3.051	3.437	3.213	3.406	3.579	3.662	3.378	120-130	2.449	3107	99.6,99.6
140	3.942	4.228	4.595	4.402	4.638	4.798	4.832	4.589	130-140	3.010	3110	99.7,99.7
150	5.275	5.492	5.801	5.675	5.960	6.061	6.049	5.868	140-150	3.211	3113	99.8,99.8
160	6.584	6.710	6.950	6.892	7.212	7.205	7.153	7.080	150-160	2.936	3116	99.9,99.9
170	7.804	7.752	7.882	7.882	8.272	8.053	7.950	8.001	160-170	2.108	3119	100,100
180	8.260	8.167	8.121	8.155	8.374	8.218	8.155	8.178	170-180	0.7722	3119	100,100
DEG	LUMINOUS INTENSITY:cd									UNIT:lm		

Conical surface Flux(90deg): 2281.4 lm

%lum = 73.1%

%lamp = 73.1%

Conical surface Flux(130deg): 2912.7 lm

%lum = 93.4%

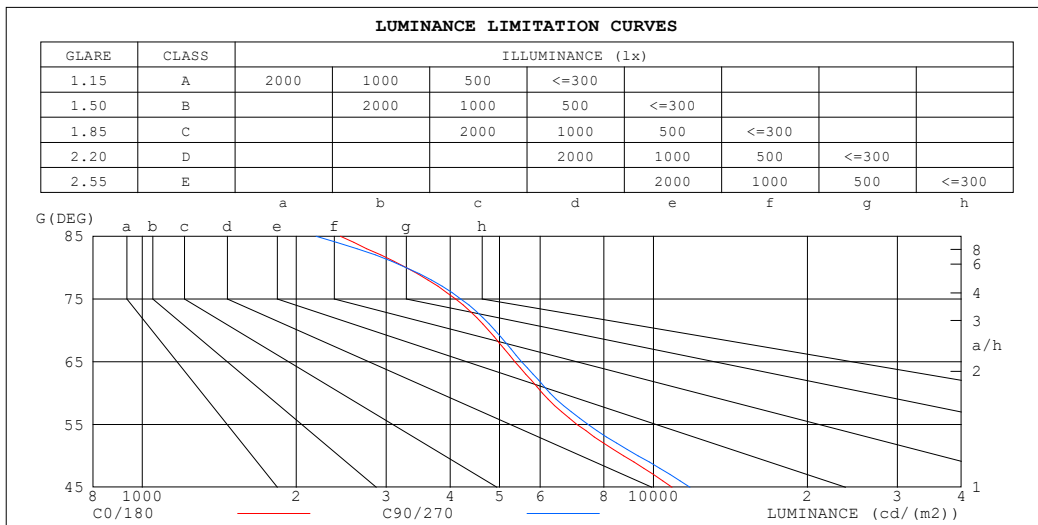
%lamp = 93.4%

C Range: 0 - 360DEG
 C Interval: 30.0DEG
 Test Speed: HIGH
 Temperature:25.3℃
 Operators:
 Test Date:2026-04-21

γ Range: 0 - 180DEG
 γ Interval: 1.0DEG
 Test System:EVERFINE GO-3000H_V1 SYSTEM V2.00.471
 Humidity:65.0%
 Test Distance:12.177m [K=1.0000]
 Remarks:

LUMINANCE LIMITATION CURVES

Test:U:231.08V I:0.1268A P:27.949W PF:0.9537 Freq:49.99Hz UTHDi:0.00% ITHDi:0.00% KDisp:0 Lamp Flux:3119.31x1 lm		
NAME: 62001000501.27W.3K	TYPE: 62001000501.27W.3K	WEIGHT:
SPEC.: 62001000501.27W.3K	DIM.: 1438*65*42mm	SERIAL No.:
MFR.:	SUR.: 1432*57mm	Shielding Angle:



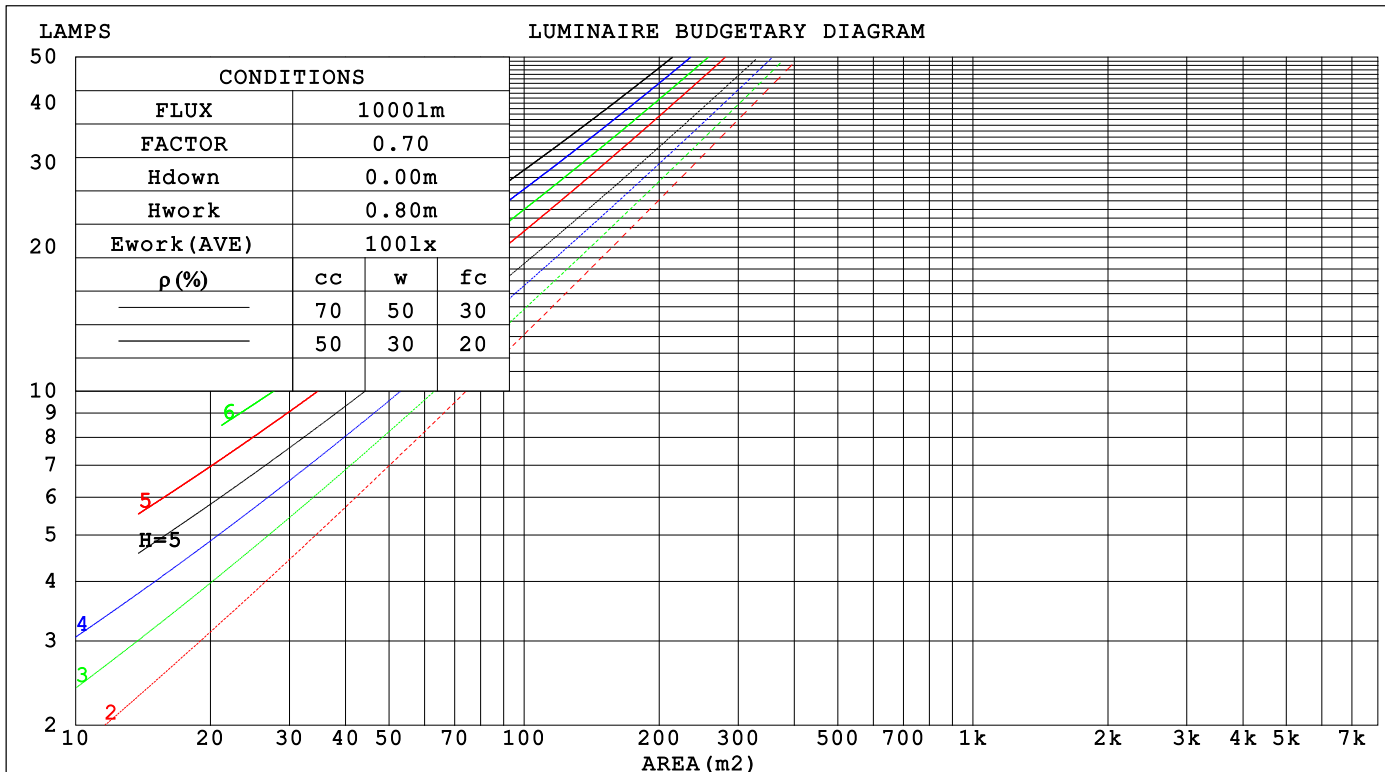
C Range: 0 - 360DEG
C Interval: 30.0DEG
Test Speed: HIGH
Temperature: 25.3°C
Operators:
Test Date: 2026-04-21

γ Range: 0 - 180DEG
γ Interval: 1.0DEG
Test System: EVERFINE GO-3000H_V1 SYSTEM V2.00.471
Humidity: 65.0%
Test Distance: 12.177m [K=1.0000]
Remarks:

CU AND LUMINAIRE BUDGETARY ESTIMATE DIAGRAM

Test:U:231.08V I:0.1268A P:27.949W PF:0.9537 Freq:49.99Hz		
UTHDi:0.00% ITHDi:0.00% KDisp:0 Lamp Flux:3119.31x1 lm		
NAME: 62001000501.27W.3K	TYPE: 62001000501.27W.3K	WEIGHT:
SPEC.: 62001000501.27W.3K	DIM.: 1438*65*42mm	SERIAL No.:
MFR.:	SUR.: 1432*57mm	Shielding Angle:

pcc	80%			70%			50%			30%			10%			0														
pw	50%	30%	10%	50%	30%	10%	50%	30%	10%	50%	30%	10%	50%	30%	10%	0														
pfc	20%			20%			20%			20%			20%			0														
RCR	RCR:Room Cavity Ratio															Coefficients of Utilization(CU)														
0.0	1.19	1.19	1.19	1.16	1.16	1.16	1.11	1.11	1.11	1.06	1.06	1.06	1.02	1.02	1.02	.99														
1.0	1.07	1.04	1.01	1.05	1.02	.99	1.01	.98	.96	.97	.95	.93	.93	.92	.90	.88														
2.0	.96	.91	.86	.95	.90	.85	.91	.87	.83	.88	.84	.81	.85	.82	.79	.78														
3.0	.87	.80	.75	.85	.79	.74	.83	.77	.73	.80	.75	.72	.77	.74	.70	.69														
4.0	.79	.72	.66	.78	.71	.66	.75	.69	.65	.73	.68	.64	.71	.67	.63	.61														
5.0	.72	.64	.59	.71	.64	.58	.69	.63	.58	.67	.61	.57	.65	.60	.57	.55														
6.0	.66	.58	.53	.65	.58	.53	.63	.57	.52	.62	.56	.52	.60	.55	.51	.49														
7.0	.61	.53	.48	.60	.53	.48	.58	.52	.47	.57	.51	.47	.56	.51	.47	.45														
8.0	.56	.49	.44	.56	.48	.43	.54	.48	.43	.53	.47	.43	.52	.47	.43	.41														
9.0	.52	.45	.40	.52	.45	.40	.50	.44	.40	.49	.44	.39	.48	.43	.39	.38														
10.0	.49	.42	.37	.48	.41	.37	.47	.41	.37	.46	.41	.36	.45	.40	.36	.35														



C Range: 0 - 360DEG
C Interval: 30.0DEG
Test Speed: HIGH
Temperature:25.3℃
Operators:
Test Date:2026-04-21

γ Range: 0 - 180DEG
γ Interval: 1.0DEG
Test System:EVERFINE GO-3000H_V1 SYSTEM V2.00.471
Humidity:65.0%
Test Distance:12.177m [K=1.0000]
Remarks:

WEC AND CCEC

Test:U:231.08V I:0.1268A P:27.949W PF:0.9537 Freq:49.99Hz			UTHDi:0.00% ITHDi:0.00% KDisp:0			Lamp Flux:3119.31x1 lm		
NAME: 62001000501.27W.3K			TYPE: 62001000501.27W.3K			WEIGHT:		
SPEC.: 62001000501.27W.3K			DIM.: 1438*65*42mm			SERIAL No.:		
MFR.:			SUR.: 1432*57mm			Shielding Angle:		

pcc	80%			70%			50%			30%			10%			0	
pw	50%	30%	10%	50%	30%	10%	50%	30%	10%	50%	30%	10%	50%	30%	10%	0	
pfc	20%			20%			20%			20%			20%			0	
RCR	RCR:Room Cavity Ratio						Wall Exitance Coefficients(WEC)										
0.0																	
1.0	.243	.138	.044	.236	.135	.043	.223	.128	.041	.211	.121	.039	.199	.116	.037		
2.0	.233	.128	.039	.227	.125	.039	.216	.120	.037	.205	.115	.036	.195	.110	.035		
3.0	.220	.117	.035	.215	.115	.035	.205	.111	.034	.195	.107	.033	.187	.103	.032		
4.0	.207	.107	.032	.202	.106	.031	.193	.102	.031	.185	.099	.030	.177	.096	.029		
5.0	.194	.099	.029	.190	.098	.028	.182	.095	.028	.175	.092	.027	.168	.090	.027		
6.0	.182	.091	.026	.179	.090	.026	.172	.088	.026	.165	.086	.025	.159	.084	.025		
7.0	.172	.085	.024	.169	.084	.024	.162	.082	.024	.157	.080	.023	.151	.079	.023		
8.0	.162	.079	.022	.159	.078	.022	.154	.077	.022	.149	.075	.022	.144	.074	.021		
9.0	.154	.074	.021	.151	.074	.021	.146	.072	.020	.141	.071	.020	.137	.069	.020		
10.0	.146	.070	.019	.143	.069	.019	.139	.068	.019	.134	.067	.019	.130	.066	.019		

pcc	80%			70%			50%			30%			10%			0	
pw	50%	30%	10%	50%	30%	10%	50%	30%	10%	50%	30%	10%	50%	30%	10%	0	
pfc	20%			20%			20%			20%			20%			0	
RCR	RCR:Room Cavity Ratio						Ceiling Cavity Exitance Coefficients (CCEC)										
0.0	.195	.195	.195	.167	.167	.167	.114	.114	.114	.065	.065	.065	.021	.021	.021		
1.0	.180	.161	.144	.154	.138	.124	.105	.095	.086	.061	.055	.050	.019	.018	.016		
2.0	.169	.137	.110	.145	.118	.095	.099	.081	.066	.057	.047	.039	.018	.015	.013		
3.0	.159	.119	.086	.137	.102	.074	.094	.071	.052	.054	.041	.031	.017	.013	.010		
4.0	.151	.105	.069	.130	.090	.060	.089	.063	.042	.052	.037	.025	.017	.012	.008		
5.0	.143	.094	.057	.123	.081	.050	.085	.057	.035	.049	.033	.021	.016	.011	.007		
6.0	.136	.085	.048	.117	.074	.042	.081	.052	.030	.047	.030	.018	.015	.010	.006		
7.0	.130	.078	.041	.112	.068	.036	.077	.047	.026	.045	.028	.015	.014	.009	.005		
8.0	.124	.072	.036	.107	.062	.032	.074	.044	.022	.043	.026	.013	.014	.008	.004		
9.0	.118	.067	.032	.102	.058	.028	.071	.041	.020	.041	.024	.012	.013	.008	.004		
10.0	.113	.063	.029	.098	.054	.025	.068	.038	.018	.040	.023	.011	.013	.007	.004		

C Range: 0 - 360DEG
C Interval: 30.0DEG
Test Speed: HIGH
Temperature:25.3℃
Operators:
Test Date:2026-04-21

γ Range: 0 - 180DEG
γ Interval: 1.0DEG
Test System:EVERFINE GO-3000H_V1 SYSTEM V2.00.471
Humidity:65.0%
Test Distance:12.177m [K=1.0000]
Remarks:

UGR(Unified Glare Rating) Table

Test:U:231.08V I:0.1268A P:27.949W PF:0.9537 Freq:49.99Hz UTHDi:0.00% ITHDi:0.00% KDisp:0 Lamp Flux:3119.31x1 lm										
NAME: 62001000501.27W.3K					TYPE: 62001000501.27W.3K			WEIGHT:		
SPEC.: 62001000501.27W.3K					DIM.: 1438*65*42mm			SERIAL No.:		
MFR.:					SUR.: 1432*57mm			Shielding Angle:		
ceiling/cavity	0.7	0.7	0.5	0.5	0.3	0.7	0.7	0.5	0.5	0.3
walls	0.5	0.3	0.5	0.3	0.3	0.5	0.3	0.5	0.3	0.3
working plane	0.2	0.2	0.2	0.2	0.2	0.2	0.2	0.2	0.2	0.2
Room dimensions	Viewed crosswise					Viewed endwise				
x = 2H y = 2H	18.7	20.0	19.0	20.2	20.4	19.0	20.2	19.2	20.4	20.6
3H	19.5	20.6	19.8	20.9	21.1	19.7	20.8	20.0	21.1	21.3
4H	19.7	20.8	20.1	21.1	21.3	19.9	21.0	20.3	21.3	21.5
6H	19.9	20.9	20.2	21.2	21.5	20.1	21.1	20.4	21.4	21.7
8H	19.9	20.9	20.3	21.2	21.5	20.1	21.1	20.5	21.4	21.7
12H	19.9	20.9	20.3	21.2	21.5	20.1	21.1	20.5	21.4	21.7
4H 2H	19.0	20.1	19.3	20.4	20.6	19.2	20.3	19.5	20.6	20.8
3H	19.9	20.9	20.3	21.2	21.5	20.1	21.1	20.4	21.3	21.6
4H	20.3	21.2	20.7	21.5	21.8	20.5	21.3	20.8	21.7	22.0
6H	20.6	21.3	21.0	21.7	22.1	20.7	21.5	21.1	21.8	22.2
8H	20.6	21.4	21.1	21.7	22.1	20.8	21.5	21.2	21.8	22.2
12H	20.7	21.3	21.1	21.7	22.1	20.8	21.4	21.2	21.8	22.2
8H 4H	20.4	21.1	20.8	21.5	21.9	20.6	21.3	21.0	21.6	22.0
6H	20.8	21.4	21.2	21.8	22.2	20.9	21.5	21.3	21.9	22.3
8H	20.9	21.4	21.4	21.8	22.3	21.0	21.5	21.5	21.9	22.4
12H	21.0	21.4	21.4	21.9	22.3	21.0	21.5	21.5	21.9	22.4
12H 4H	20.4	21.1	20.8	21.4	21.9	20.6	21.2	21.0	21.6	22.0
6H	20.8	21.3	21.3	21.7	22.2	20.9	21.4	21.4	21.9	22.3
8H	20.9	21.4	21.4	21.8	22.3	21.0	21.5	21.5	21.9	22.4
Variations with the observer position at spacings(CIE Pub.117):										
S = 1.0H	+ 0.6 / - 0.7					+ 0.6 / - 0.7				
1.5H	+ 0.4 / - 0.5					+ 0.5 / - 0.5				
2.0H	+ 1.2 / - 0.8					+ 1.3 / - 0.8				

CIE Pub.117, 3119 lm Total Lamp Luminous Flux Corrected (8log(F/F0) = 4.0)
Area: 0.082 m2

C Range: 0 - 360DEG
C Interval: 30.0DEG
Test Speed: HIGH
Temperature:25.3℃
Operators:
Test Date:2026-04-21

γ Range: 0 - 180DEG
γ Interval: 1.0DEG
Test System:EVERFINE GO-3000H_V1 SYSTEM V2.00.471
Humidity:65.0%
Test Distance:12.177m [K=1.0000]
Remarks:

UTILIZATION FACTORS TABLE

Test:U:231.08V I:0.1268A P:27.949W PF:0.9537 Freq:49.99Hz UTHDi:0.00% ITHDi:0.00% KDisp:0 Lamp Flux:3119.31x1 lm		
NAME: 62001000501.27W.3K	TYPE: 62001000501.27W.3K	WEIGHT:
SPEC.: 62001000501.27W.3K	DIM.: 1438*65*42mm	SERIAL No.:
MFR.:	SUR.: 1432*57mm	Shielding Angle:

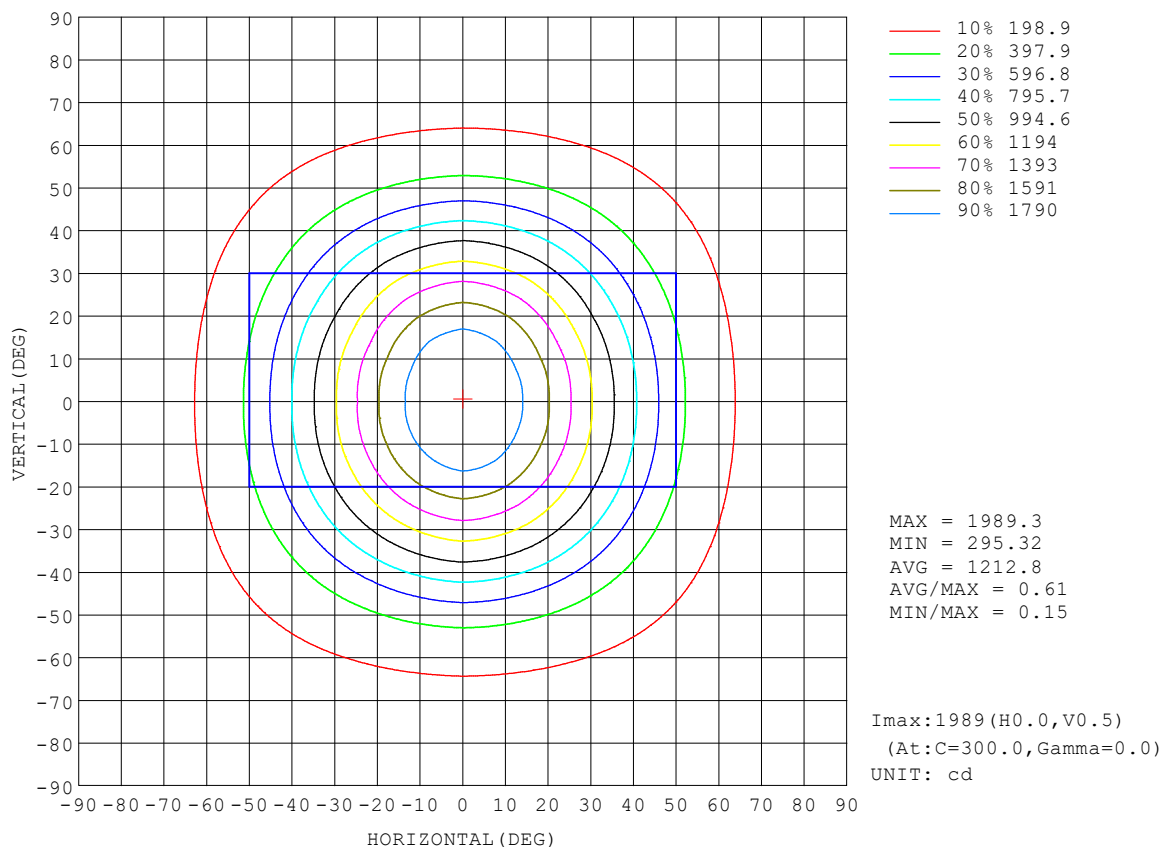
REFLECTANCE										
Ceiling	0.8	0.8	0.8	0.7	0.7	0.7	0.5	0.5	0.5	0
Walls	0.7	0.5	0.3	0.7	0.5	0.3	0.7	0.5	0.3	0
Working plane	0.2	0.2	0.2	0.2	0.2	0.2	0.2	0.2	0.2	0
ROOM INDEX	UTILIZATION FACTORS (PERCENT) $k(RI) \times RCR = 5$									
$k = 0.60$	69	60	54	69	59	54	67	59	54	48
0.80	79	69	64	78	69	63	76	68	63	57
1.00	86	77	72	85	77	71	83	77	71	65
1.25	92	84	78	91	83	78	88	82	77	71
1.50	96	89	83	95	88	83	92	86	82	75
2.00	101	95	90	100	94	89	96	91	87	81
2.50	104	98	94	102	97	93	99	94	91	83
3.00	107	101	97	105	100	96	101	97	94	86
4.00	110	105	102	107	104	100	103	100	98	89
5.00	111	108	105	109	106	103	105	102	100	91
ROOM INDEX	UF (total)									Direct
According to DIN EN 13032-2 2004			Suspended					SHRNOM = 1.25		

C Range: 0 - 360DEG
C Interval: 30.0DEG
Test Speed: HIGH
Temperature: 25.3°C
Operators:
Test Date: 2026-04-21

γ Range: 0 - 180DEG
γ Interval: 1.0DEG
Test System: EVERFINE GO-3000H_V1 SYSTEM V2.00.471
Humidity: 65.0%
Test Distance: 12.177m [K=1.0000]
Remarks:

ISOCANDELA DIAGRAM

Test:U:231.08V I:0.1268A P:27.949W PF:0.9537 Freq:49.99Hz UTHDi:0.00% ITHDi:0.00% KDisp:0 Lamp Flux:3119.31x1 lm		
NAME: 62001000501.27W.3K	TYPE: 62001000501.27W.3K	WEIGHT:
SPEC.: 62001000501.27W.3K	DIM.: 1438*65*42mm	SERIAL No.:
MFR.:	SUR.: 1432*57mm	Shielding Angle:

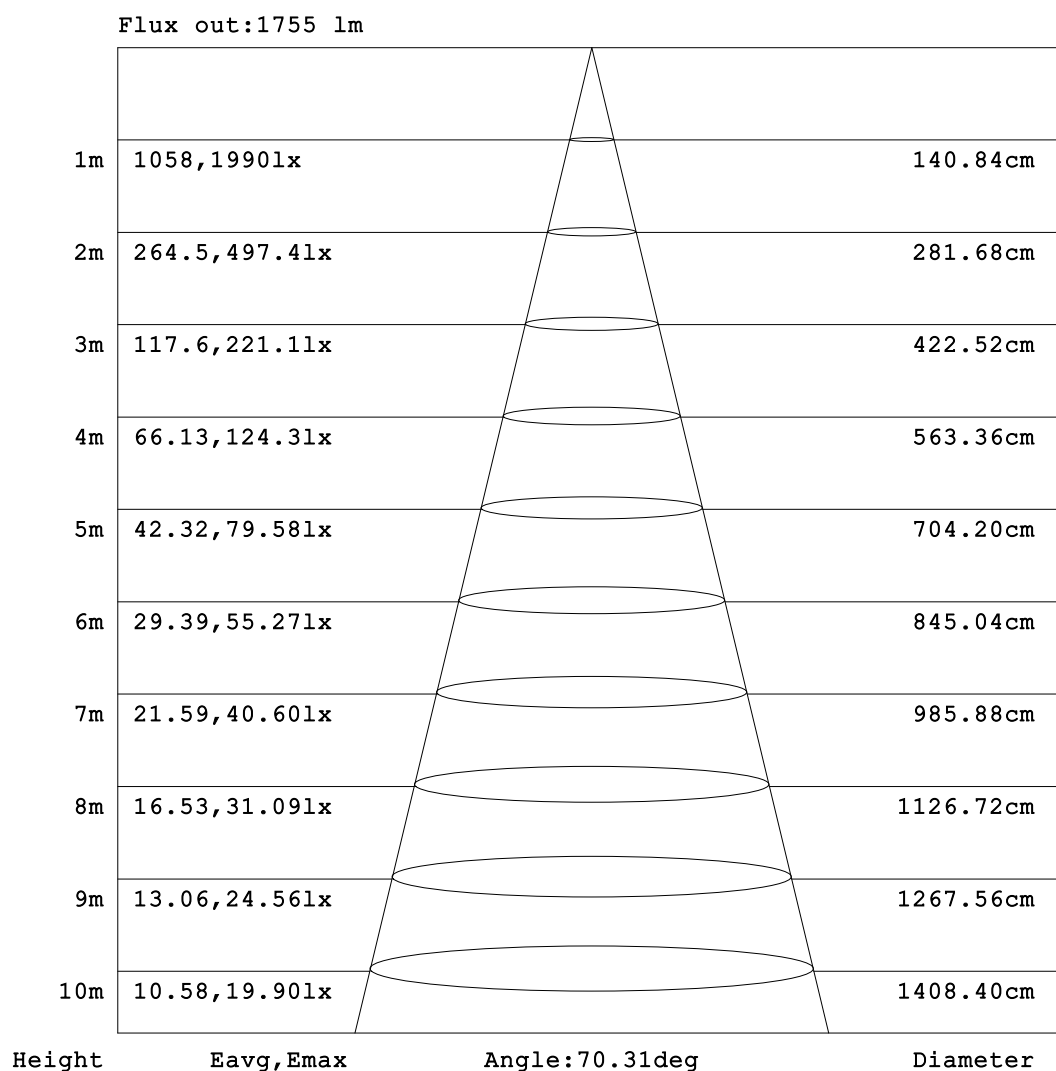


C Range: 0 - 360DEG
C Interval: 30.0DEG
Test Speed: HIGH
Temperature:25.3℃
Operators:
Test Date:2026-04-21

γ Range: 0 - 180DEG
γ Interval: 1.0DEG
Test System:EVERFINE GO-3000H_V1 SYSTEM V2.00.471
Humidity:65.0%
Test Distance:12.177m [K=1.0000]
Remarks:

AAI Figure

Test:U:231.08V I:0.1268A P:27.949W PF:0.9537 Freq:49.99Hz UTHDi:0.00% ITHDi:0.00% KDisp:0 Lamp Flux:3119.31x1 lm		
NAME: 62001000501.27W.3K	TYPE: 62001000501.27W.3K	WEIGHT:
SPEC.: 62001000501.27W.3K	DIM.: 1438*65*42mm	SERIAL No.:
MFR.:	SUR.: 1432*57mm	Shielding Angle:



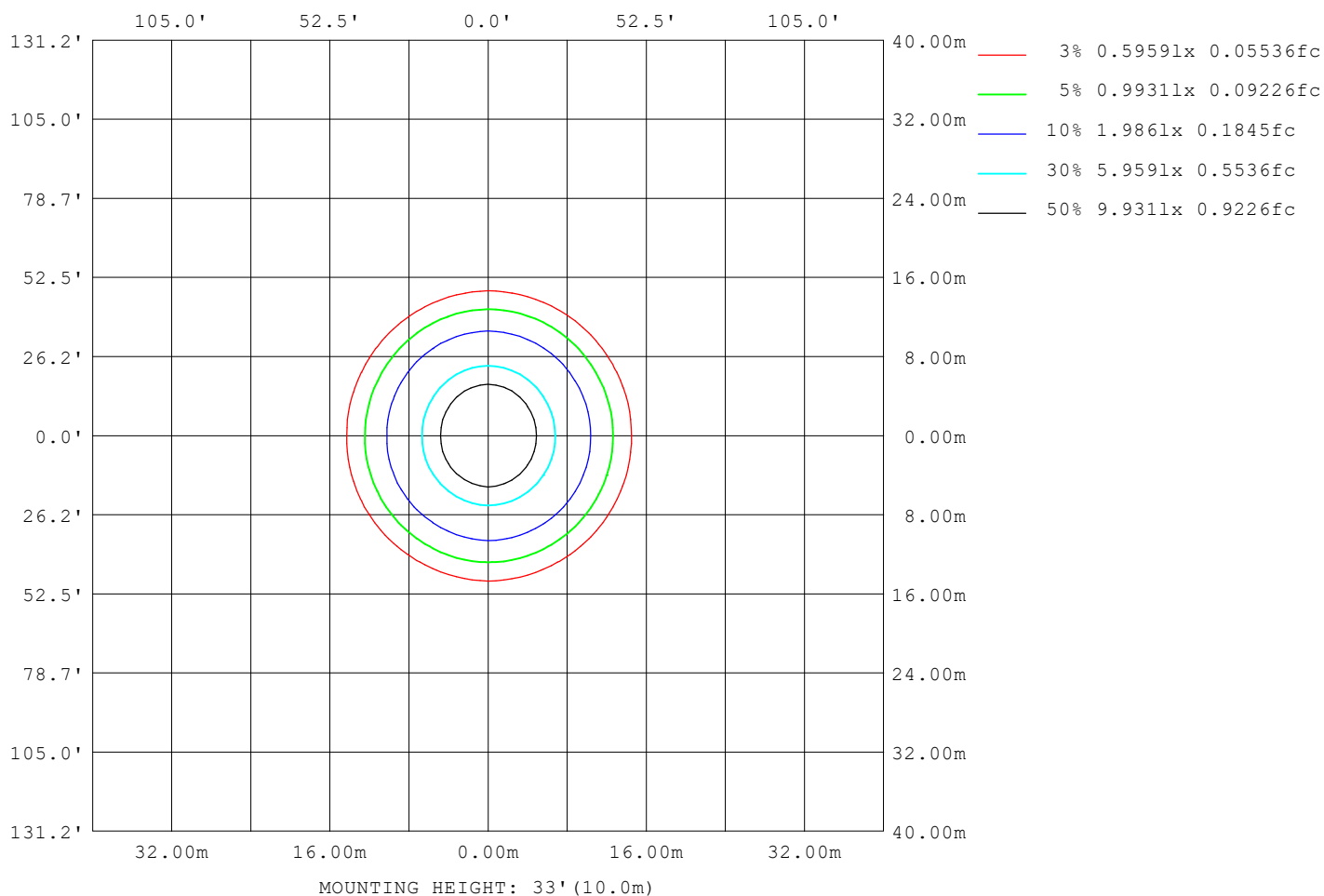
Note: The Curves indicate the illuminated area and the average illumination when the luminaire is at different distance.

C Range: 0 - 360DEG
C Interval: 30.0DEG
Test Speed: HIGH
Temperature: 25.3°C
Operators:
Test Date: 2026-04-21

γ Range: 0 - 180DEG
γ Interval: 1.0DEG
Test System: EVERFINE GO-3000H_V1 SYSTEM V2.00.471
Humidity: 65.0%
Test Distance: 12.177m [K=1.0000]
Remarks:

ISOLUX DIAGRAM

Test:U:231.08V I:0.1268A P:27.949W PF:0.9537 Freq:49.99Hz UTHDi:0.00% ITHDi:0.00% KDisp:0 Lamp Flux:3119.31x1 lm		
NAME: 62001000501.27W.3K	TYPE: 62001000501.27W.3K	WEIGHT:
SPEC.: 62001000501.27W.3K	DIM.: 1438*65*42mm	SERIAL No.:
MFR.:	SUR.: 1432*57mm	Shielding Angle:



C Range: 0 - 360DEG
C Interval: 30.0DEG
Test Speed: HIGH
Temperature:25.3℃
Operators:
Test Date:2026-04-21

γ Range: 0 - 180DEG
γ Interval: 1.0DEG
Test System:EVERFINE GO-3000H_V1 SYSTEM V2.00.471
Humidity:65.0%
Test Distance:12.177m [K=1.0000]
Remarks:

LED Avg.L Report

Test:U:231.08V I:0.1268A P:27.949W PF:0.9537 Freq:49.99Hz UTHDi:0.00% ITHDi:0.00% KDisp:0 Lamp Flux:3119.31x1 lm		
NAME: 62001000501.27W.3K	TYPE: 62001000501.27W.3K	WEIGHT:
SPEC.: 62001000501.27W.3K	DIM.: 1438*65*42mm	SERIAL No.:
MFR.:	SUR.: 1432*57mm	Shielding Angle:

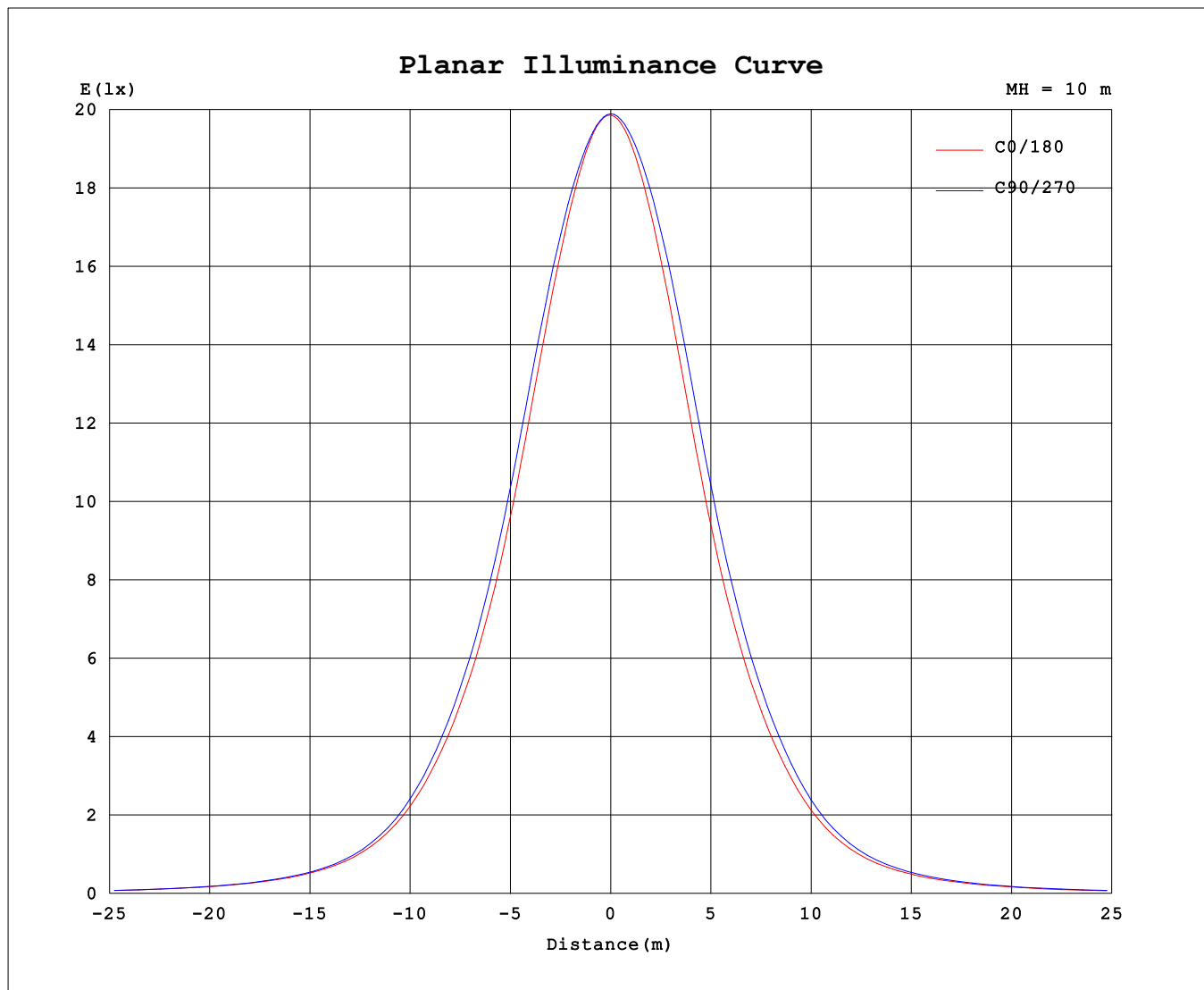
AvgL	cd/m2
L_0~180 (65) av	5185
L_0~180 (75) av	3889
L_0~180 (85) av	2199
L_90~270 (65) av	5449
L_90~270 (75) av	4100
L_90~270 (85) av	2088
L_45 (65) av	5259
L_45 (75) av	3928
L_45 (85) av	2190

Standard: GB/T 29293-2012

C Range: 0 - 360DEG
C Interval: 30.0DEG
Test Speed: HIGH
Temperature:25.3℃
Operators:
Test Date:2026-04-21

γ Range: 0 - 180DEG
γ Interval: 1.0DEG
Test System:EVERFINE GO-3000H_V1 SYSTEM V2.00.471
Humidity:65.0%
Test Distance:12.177m [K=1.0000]
Remarks:

Planar Illuminance Curve



C Range: 0 - 360DEG
 C Interval: 30.0DEG
 Test Speed: HIGH
 Temperature: 25.3 °C
 Operators:
 Test Date: 2026-04-21

γ Range: 0 - 180DEG
 γ Interval: 1.0DEG
 Test System: EVERFINE GO-3000H_V1 SYSTEM V2.00.471
 Humidity: 65.0%
 Test Distance: 12.177m [K=1.0000]
 Remarks:

LUMINOUS DISTRIBUTION INTENSITY DATA

Test:U:231.08V I:0.1268A P:27.949W PF:0.9537 Freq:49.99Hz		
UTHDi:0.00% ITHDi:0.00% KDisp:0 Lamp Flux:3119.31x1 lm		
NAME: 62001000501.27W.3K	TYPE: 62001000501.27W.3K	WEIGHT:
SPEC.: 62001000501.27W.3K	DIM.: 1438*65*42mm	SERIAL No.:
MFR.:	SUR.: 1432*57mm	Shielding Angle:

Table--1

UNIT: cd

C (DEG) γ (DEG)	0	30	60	90	120	150	180	210	240	270	300	330							
0	1988	1988	1988	1988	1988	1988	1988	1988	1988	1988	1988	1988							
5	1963	1964	1964	1965	1961	1959	1955	1959	1966	1969	1968	1963							
10	1884	1891	1903	1908	1896	1882	1872	1882	1906	1917	1909	1890							
15	1766	1780	1809	1820	1795	1765	1748	1768	1814	1834	1814	1776							
20	1604	1627	1668	1689	1653	1606	1578	1605	1668	1702	1676	1620							
25	1409	1437	1485	1510	1466	1411	1380	1410	1480	1519	1490	1427							
30	1207	1235	1282	1307	1260	1207	1177	1205	1273	1311	1281	1222							
35	1015	1040	1080	1102	1058	1013	986	1010	1068	1102	1074	1026							
40	825	847	877	897	857	821	797	815	862	895	872	833							
45	631	648	665	683	646	625	603	616	650	676	658	635							
50	461	470	481	492	467	452	436	442	467	485	475	462							
55	334	338	343	350	335	326	316	319	332	345	340	333							
60	249	251	253	257	247	242	235	237	244	252	248	247							
65	186	187	188	191	184	179	174	174	179	186	184	184							
70	134	135	134	137	130	128	123	123	126	132	130	132							
75	87.1	88.4	87.1	89.0	82.7	82.0	77.9	78.3	79.6	85.1	84.5	85.5							
80	46.8	47.7	46.2	46.7	42.8	42.8	39.9	40.3	40.9	43.9	44.5	45.5							
85	17.5	18.0	16.5	15.6	14.7	15.3	14.0	13.9	13.9	14.2	15.9	16.7							
90	0.88	1.52	1.53	1.21	1.31	0.86	0.72	1.12	1.32	0.75	1.31	1.12							
95	0.67	0.78	0.75	0.63	0.73	0.75	0.81	0.87	0.86	0.75	0.95	0.86							
100	0.59	0.81	0.74	0.85	0.76	0.86	0.98	0.90	1.05	0.89	0.98	0.90							
105	0.77	0.97	0.91	1.13	1.00	1.07	1.20	1.12	1.32	1.17	1.19	0.97							
110	1.01	1.21	1.21	1.47	1.33	1.34	1.49	1.42	1.67	1.56	1.52	1.25							
115	1.33	1.51	1.58	1.87	1.72	1.68	1.85	1.81	2.11	2.00	1.95	1.63							
120	1.72	1.94	2.04	2.33	2.16	2.11	2.29	2.29	2.61	2.50	2.44	2.09							
125	2.20	2.43	2.55	2.87	2.68	2.59	2.82	2.82	3.15	3.07	2.98	2.61							
130	2.75	2.99	3.12	3.44	3.26	3.16	3.41	3.43	3.73	3.66	3.55	3.21							
135	3.35	3.58	3.71	4.03	3.85	3.77	4.03	4.03	4.31	4.22	4.14	3.83							
140	3.94	4.17	4.29	4.60	4.44	4.37	4.64	4.66	4.94	4.83	4.74	4.43							
145	4.58	4.83	4.89	5.20	5.06	5.03	5.29	5.31	5.56	5.44	5.38	5.08							
150	5.28	5.48	5.51	5.80	5.67	5.68	5.96	5.93	6.19	6.05	5.99	5.74							
155	5.94	6.13	6.11	6.39	6.28	6.31	6.59	6.53	6.76	6.62	6.59	6.38							
160	6.58	6.73	6.69	6.95	6.87	6.92	7.21	7.12	7.29	7.15	7.17	6.99							
165	7.21	7.31	7.23	7.46	7.39	7.47	7.80	7.63	7.75	7.60	7.66	7.53							
170	7.80	7.82	7.68	7.88	7.81	7.95	8.27	8.01	8.10	7.95	8.04	7.96							
175	8.19	8.15	8.00	8.08	8.09	8.14	8.34	8.21	8.19	8.15	8.14	8.21							
180	8.26	8.23	8.10	8.12	8.14	8.17	8.37	8.22	8.21	8.16	8.16	8.20							

C Range: 0 - 360DEG
C Interval: 30.0DEG
Test Speed: HIGH
Temperature:25.3℃
Operators:
Test Date:2026-04-21

γ Range: 0 - 180DEG
γ Interval: 1.0DEG
Test System:EVERFINE GO-3000H_V1 SYSTEM V2.00.471
Humidity:65.0%
Test Distance:12.177m [K=1.0000]
Remarks: