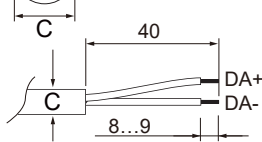


## Installation Steps

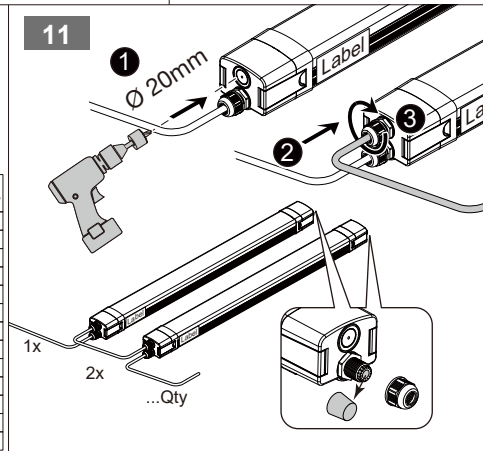
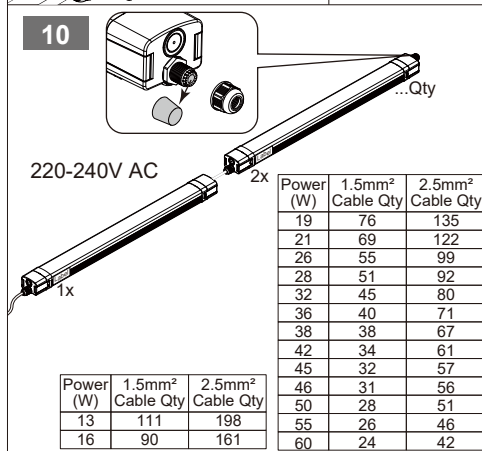
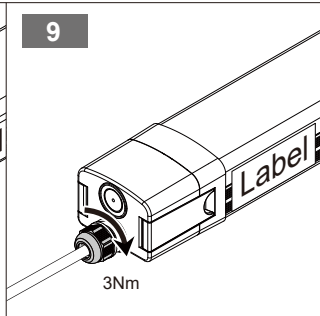
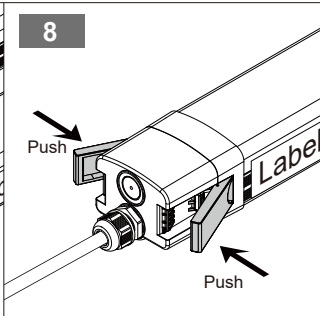
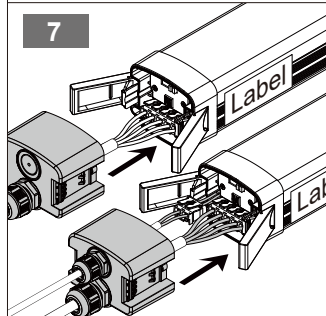
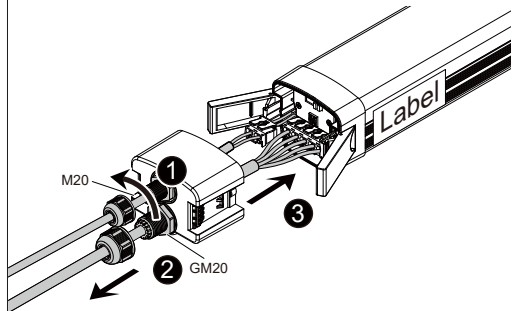
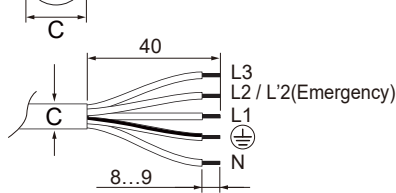
### 6-c Connecting Power

#### 7 Wires specification:

Outer diameter:  $\phi 6\text{mm} \leq C \leq 12\text{mm}$   
Core of cable:  $2 \times 1.0\text{mm}^2$



Outer diameter:  $\phi 9\text{mm} \leq C \leq 14\text{mm}$   
Core of cable:  $5 \times 2.5\text{mm}^2$



# LED Tri-proof Light

# Installation Manual

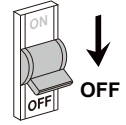
## IMPORTANT SAFETY NOTES



**WARNING**  
RISK OF ELECTRIC SHOCK

### BEFORE YOU BEGIN

- Read these instructions completely and carefully.
- The installation and connection of the luminaire must be done when switched off and by qualified people. Make sure no voltage while installation.



**CAUTION**

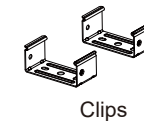
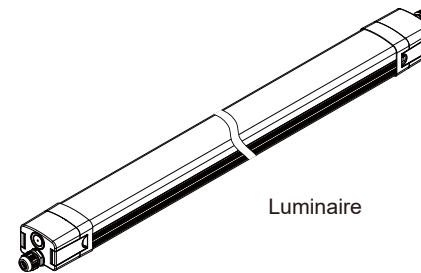
### MAINTENANCE

- To avoid injuries, disconnect power to the light and allow the unit to cool down before performing maintenance.
- Perform visual, mechanical and electrical inspections on a regular basis. We recommend routine checks to be made on an annual basis. Frequency of use and environment should determine this.
- The Covers should be cleaned periodically as needed to ensure continued photometric performance. Clean the Cover with a damp, non-abrasive, lintfree cloth. If not sufficient, use mild soap or a liquid cleaner. Do not use an abrasive, strong alkaline or acid cleaner as damage may occur.
- Inspect the topside on the luminaire to ensure that it is free of any obstructions or contamination (i.e. excessive dust build-up). Clean with a non-abrasive cloth if needed.

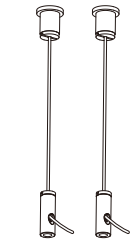


This product contains a light source of energy efficiency class D.

## Products



## Optional



Steel cable suspension kits

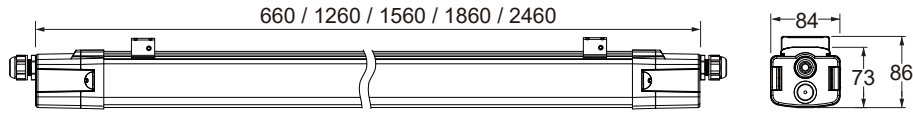


M5x6mm

DWG-P0327 (F)

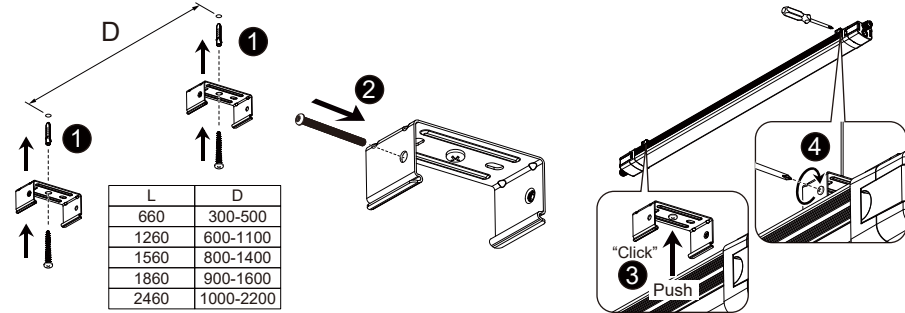
## Dimensions

[ mm ]

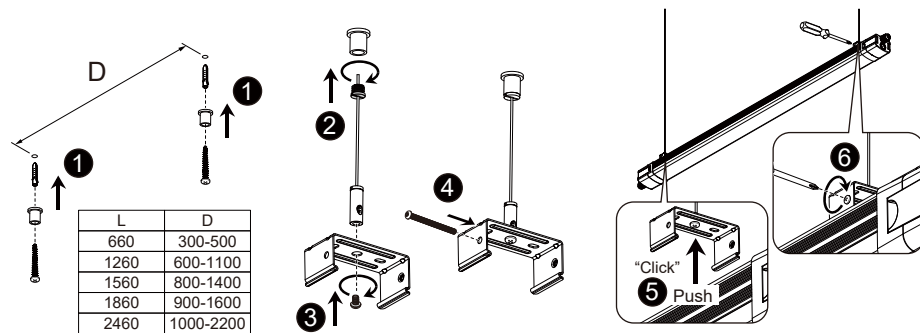


## Installation Steps

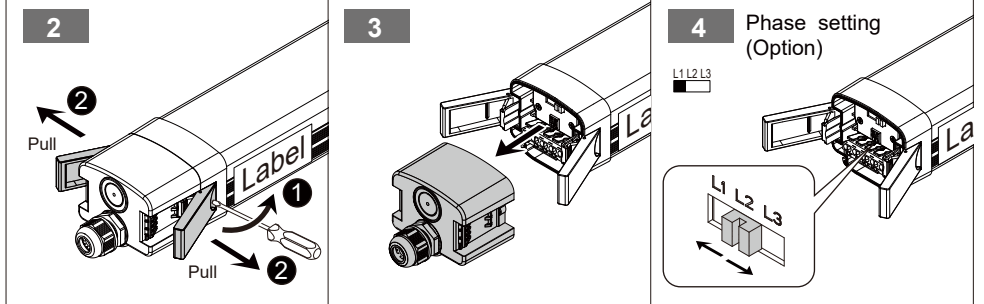
### 1-a Surface mounted



### 1-b Suspended mounted



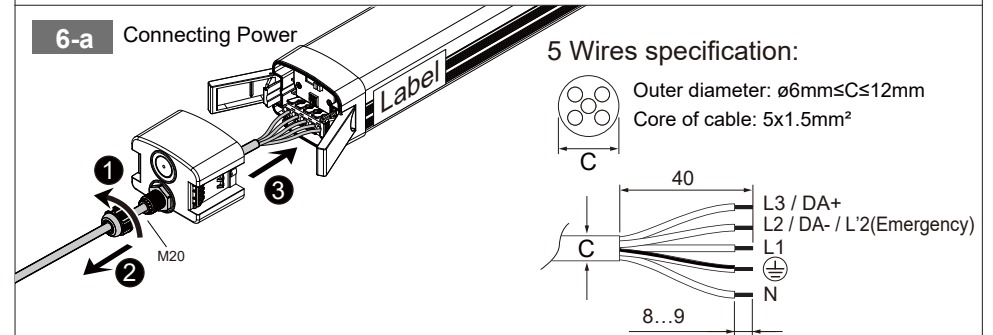
## Installation Steps



### 5 Wattage setting

ON DP 1 2 3	Power(W)						
	600mm	1200mm	1200mm	1200mm	1500mm	1500mm	1500mm
350	21	45	50	50	45	60	60
300	19	38	42	46	38	50	55
250	16	32	36	42	32	42	50
200	13	26	28	36	26	32	42

### 6-a Connecting Power



### 6-b Connecting Power

